



Brondesbury Park
QUEENS PARK, LONDON NW6

£500,000



A spacious and beautifully presented one-bedroom apartment with a private patio, located just moments from Queen's Park, NW6.

Set on the ground floor of an iconic building on Brondesbury Park, this well-maintained home is offered in excellent condition and includes the added benefit of an off-street parking space. Upon entry, you're welcomed by a large hallway with space for side tables and a dedicated coat cupboard.

The recently updated shower room sits opposite a tranquil bedroom, which features excellent built-in storage and charming views over the communal garden.

The heart of the home is the generous open-plan living space, thoughtfully arranged with a modern kitchen and dining area leading seamlessly into a comfortable lounge. Large sliding doors open directly onto the private patio ? perfect for morning coffee or al fresco dining.

Ideally located just a five-minute walk from Brondesbury Overground and a short stroll to Queen's Park station, you're also close to the vibrant amenities of Salusbury Road and Lonsdale Road.





Find the instagram content @shayla_the_agent



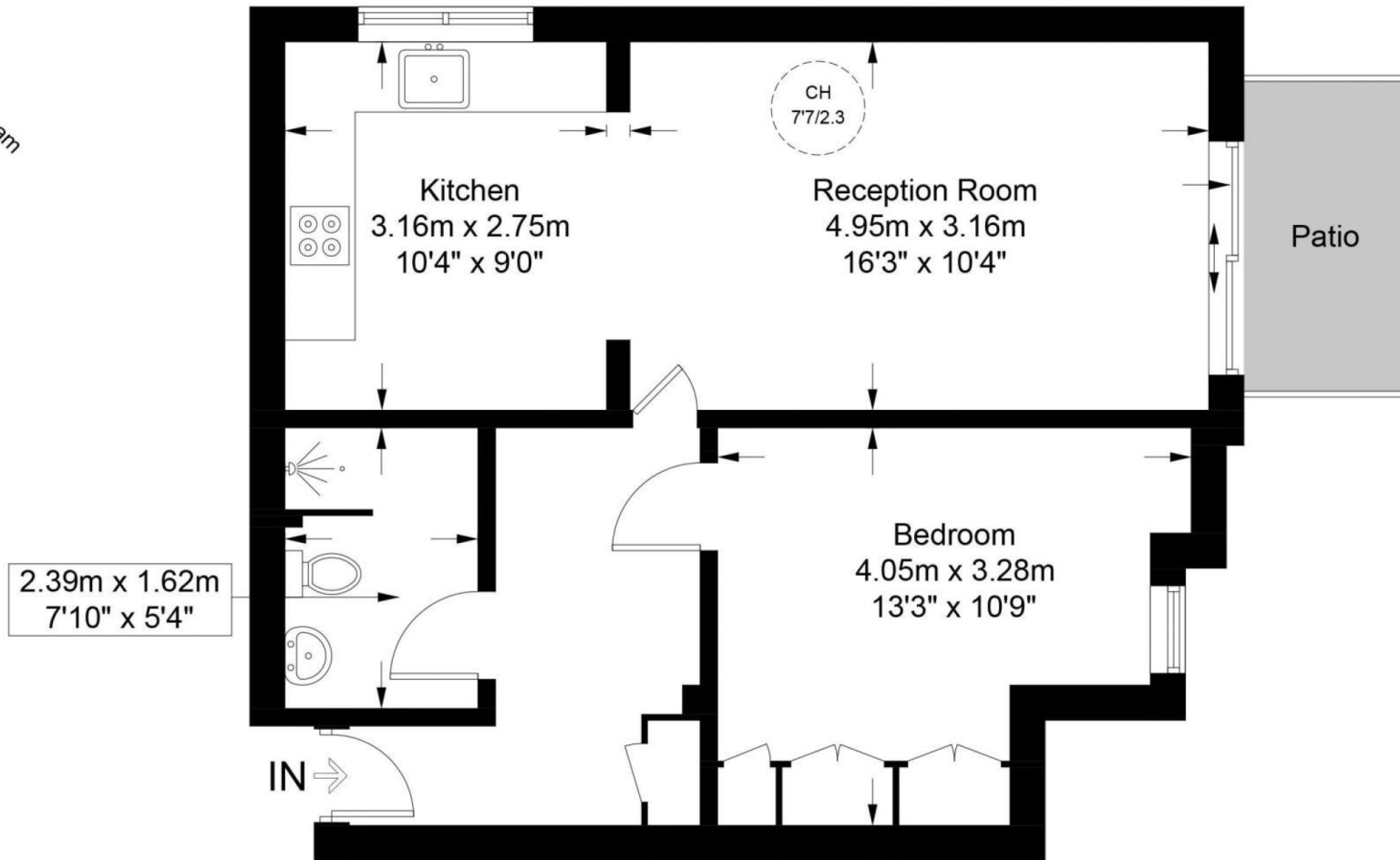
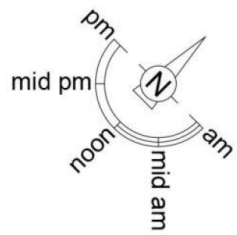






Scan for out video walkthrough





Ground Floor

This plan is for layout guidance only and is not drawn to scale unless stated. All dimensions, including windows, doors, and the Total Gross Internal Area (GIA), are approximate. For precise measurements, please consult a qualified architect or surveyor before making any decisions based on this plan.



Certified Property Measurer

Particulars

Property

Brondesbury Park, Queens Park, London NW6
£500,000

Rooms



Features

- Smart one bedroom apartment
- Patio garden
- Communal garden and off street parking
- Secure gated building

Information

Council Tax



Oliver Kent

oliver.kent@vitaproperties.uk
+4477 7274 0351



Scan for our website





T: +4420 7759 2199
E: enquiries@vitaproperties.uk

Disclaimer: These particulars are prepared as a general guide for prospective purchasers or tenants and do not constitute, nor constitute part of, an offer or contract. All statements, descriptions, and measurements contained herein are given in good faith and are believed to be correct at the time of printing, but any intending purchaser or tenant should not rely on them as statements or representations of fact and must satisfy themselves by inspection or otherwise as to their correctness. Floor plans and photographs are for illustrative purposes only and may not be to scale. The position and size of doors, windows, appliances, and other features are approximate. Anti-Money Laundering (AML): In line with the Money Laundering, Terrorist Financing and Transfer of Funds Regulations 2017, we are required to carry out customer due diligence checks. Buyers/tenants will be asked to provide proof of identity, address, and source of funds before a sale or rental can be agreed. Data Protection (GDPR): Personal information supplied to Vita Properties will be processed in accordance with the General Data Protection Regulation (GDPR). Your details may be retained for legitimate business purposes relating to property services. Full details of our Privacy Policy are available on request.

All rights reserved.