



Westfield

15 KIDDERPORE AVENUE, HAMPSTEAD, LONDON NW3

£1,950,000



An exceptional three-bedroom, two-bathroom lateral apartment extending to approximately 1,640 sq ft, positioned on the first floor (lift access) of the prestigious Westfield Apartments, Hampstead NW3. Recently fully renovated & never previously occupied, this outstanding residence offers a rare turnkey opportunity within one of North West London's most exclusive developments.

Beautifully arranged throughout, the apartment provides expansive and well-balanced living space. The elegant reception and dining area is ideal for both entertaining and everyday living, with direct access to a private balcony overlooking the central landscaped gardens and water fountain feature, creating a peaceful and picturesque outlook rarely found in such a prime location.

The high-specification kitchen is finished to an exceptional standard with integrated appliances and sleek contemporary detailing. The accommodation comprises three generously sized double bedrooms, including a luxurious principal suite with en-suite bathroom, alongside a further stylish family bathroom and additional guest WC. The apartment has been meticulously refurbished, offering a refined interior ready for immediate occupation. Designated secure underground parking space, adding significant convenience and



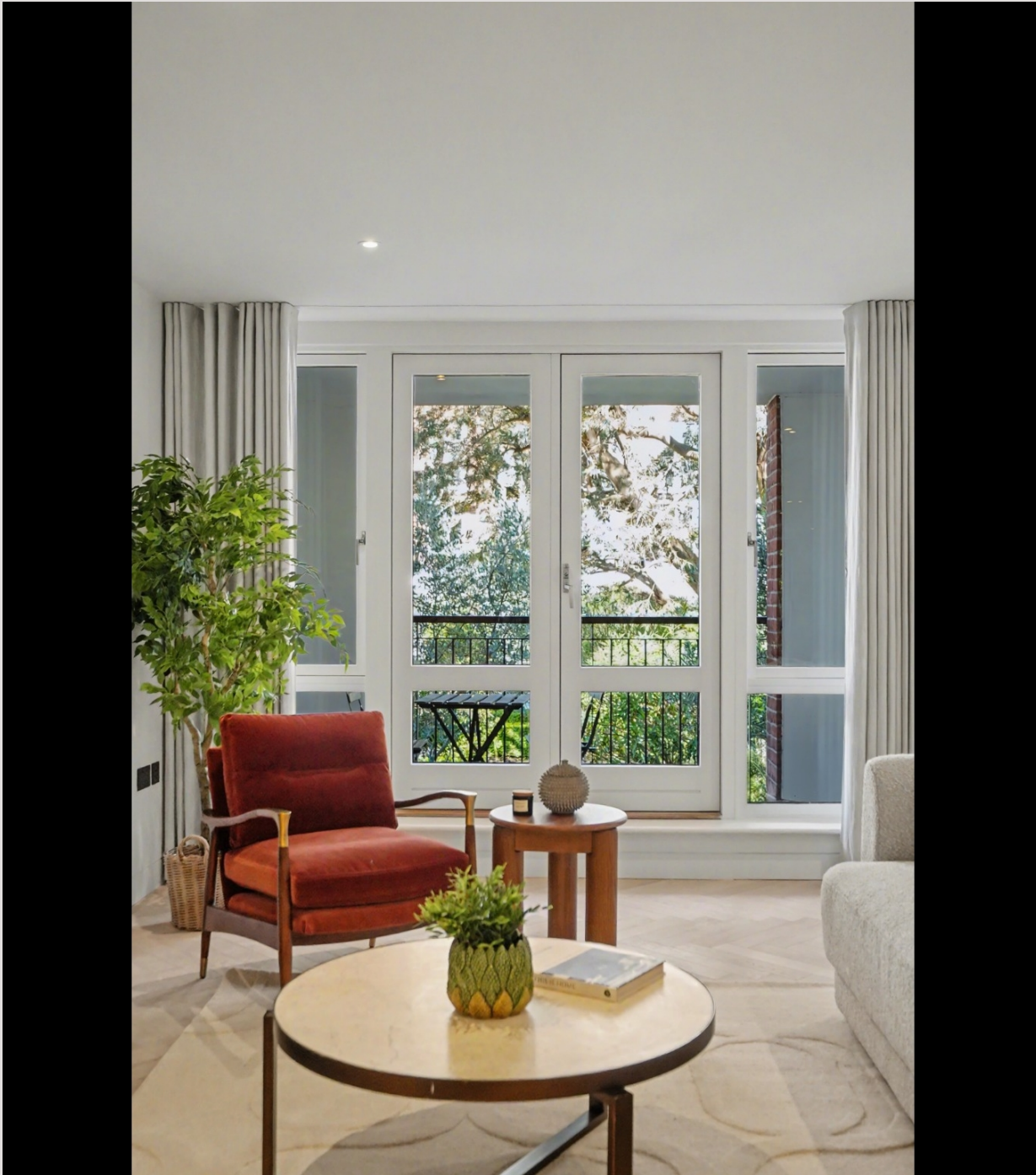


Westfield Apartments is a highly exclusive, resident-focused development, offering a full suite of premium amenities including a 24-hour concierge, lift access, and beautifully maintained landscaped communal gardens. Residents also benefit from access to an on-site gym, swimming pool and spa facilities, enhancing the lifestyle offering.







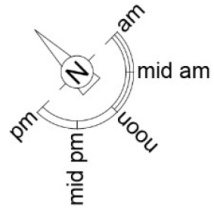


Scan for out video walkthrough



Westfield, NW3

Approximate Gross Internal Area = 1641 sq ft / 152.5 sq m



First Floor

This plan is for layout guidance only and is not drawn to scale unless stated. All dimensions, including windows, doors, and the Total Gross Internal Area (GIA), are approximate. For precise measurements, please consult a qualified architect or surveyor before making any decisions based on this plan.



Particulars

Property

Westfield, 15 Kidderpore Avenue, Hampstead, London NW3
£1,950,000

Rooms



1



2



3

Features

- Beautifully Refurbished Throughout
- Fountain Facing Terrace
- Secure Underground Parking
- Gym

Information

Council Tax

Score	Energy rating	Current	Potential
92+	A		
81-91	B		
69-80	C	79 C	79 C
55-68	D		
39-54	E		
21-38	F		
1-20	G		

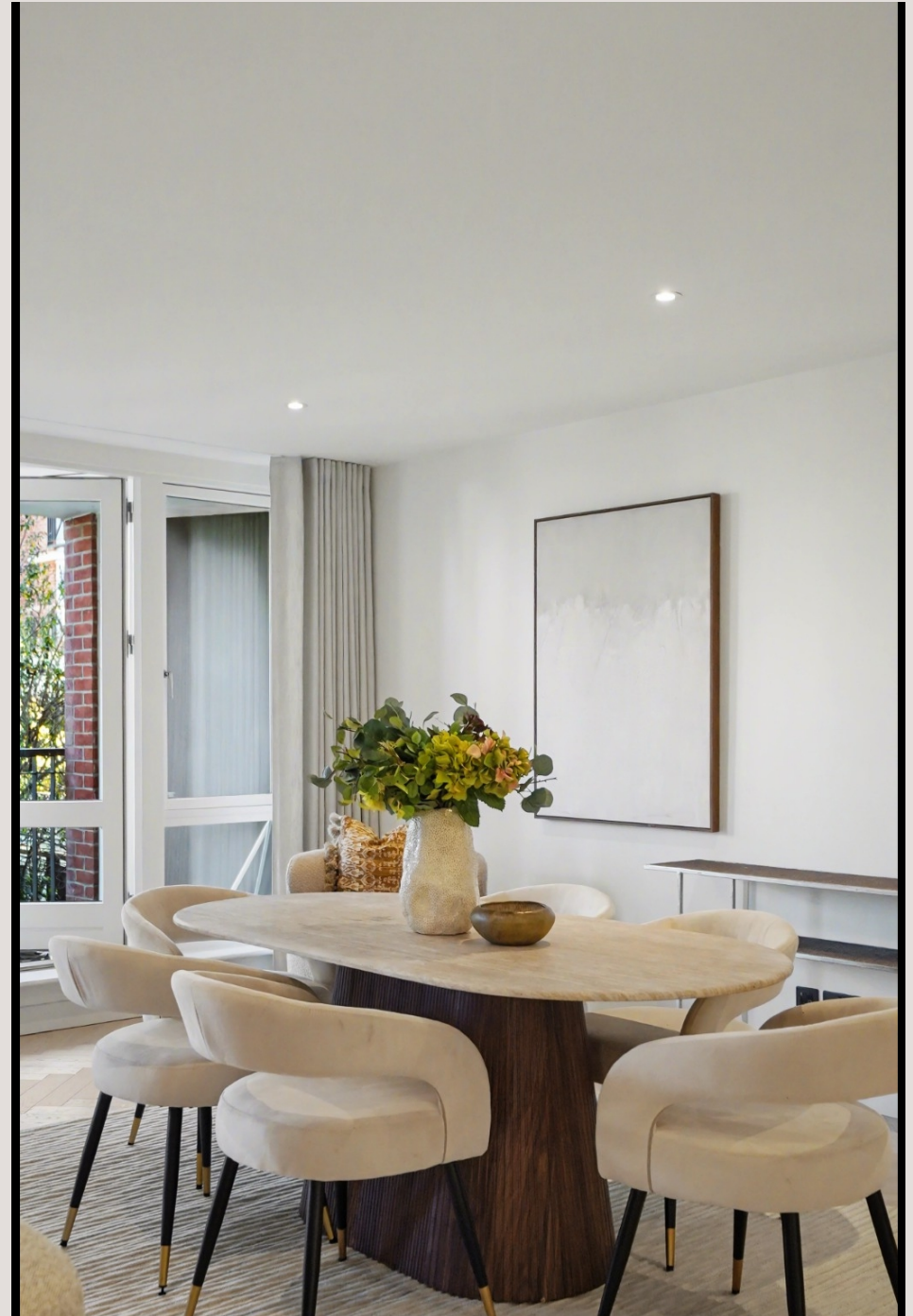


Oliver Kent

oliver.kent@vitaproperties.uk
+4477 7274 0351



Scan for our website





T: +4420 7759 2199

E: enquiries@vitaproperties.uk

Disclaimer: These particulars are prepared as a general guide for prospective purchasers or tenants and do not constitute, nor constitute part of, an offer or contract. All statements, descriptions, and measurements contained herein are given in good faith and are believed to be correct at the time of printing, but any intending purchaser or tenant should not rely on them as statements or representations of fact and must satisfy themselves by inspection or otherwise as to their correctness. Floor plans and photographs are for illustrative purposes only and may not be to scale. The position and size of doors, windows, appliances, and other features are approximate. Anti-Money Laundering (AML): In line with the Money Laundering, Terrorist Financing and Transfer of Funds Regulations 2017, we are required to carry out customer due diligence checks. Buyers/tenants will be asked to provide proof of identity, address, and source of funds before a sale or rental can be agreed. Data Protection (GDPR): Personal information supplied to Vita Properties will be processed in accordance with the General Data Protection Regulation (GDPR). Your details may be retained for legitimate business purposes relating to property services. Full details of our Privacy Policy are available on request.

All rights reserved.