



Essendine Mansions

ESSENDINE ROAD, MAIDA VALE, LONDON W9

£585,000

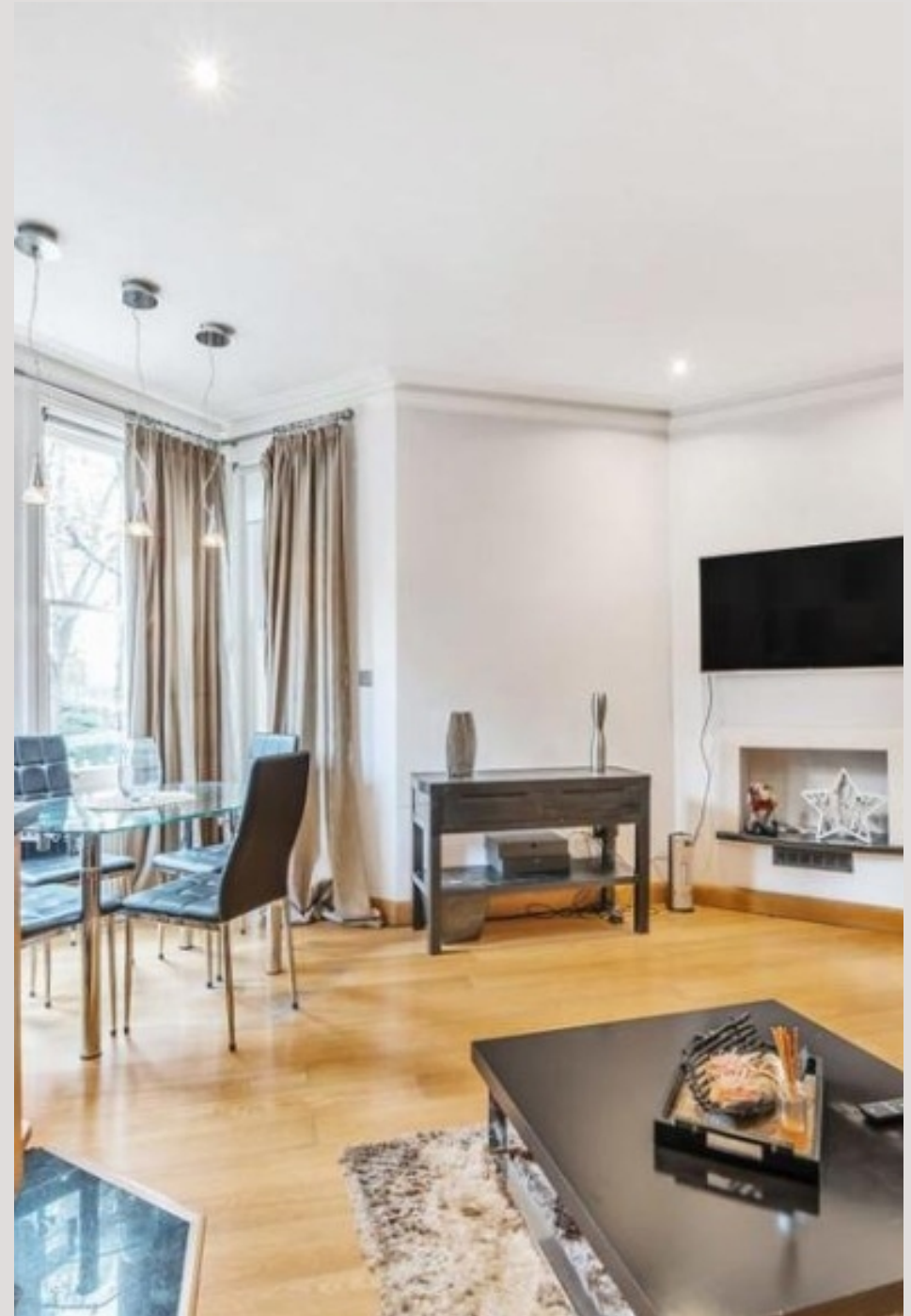


A one-bedroom apartment set on the raised ground floor of a period conversion, with views over Paddington Recreation Ground.

The property is located on Essendine Road, just off Elgin Avenue, within easy reach of Little Venice and its range of shops, cafés and local amenities.

The accommodation comprises a reception room, separate kitchen, double bedroom and bathroom. The raised ground floor position provides good natural light and an open outlook towards the park.

Paddington Recreation Ground and Regent's Canal are both within walking distance, offering access to open space and walking routes.





A one-bedroom apartment set on the raised ground floor of a period conversion, with views over Paddington Recreation Ground.

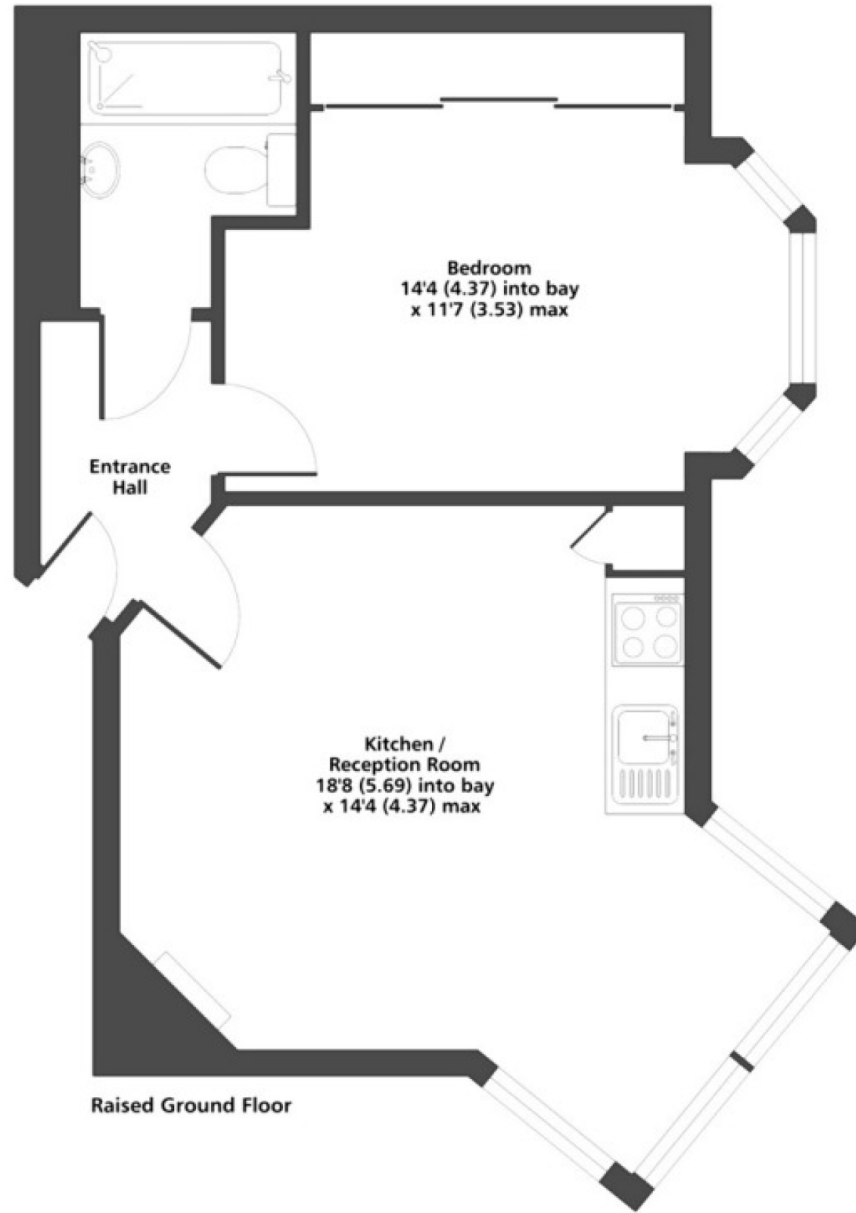
The property is located on Essendine Road, just off Elgin Avenue, within easy reach of Little Venice and its range of shops, cafés and local amenities.

The accommodation comprises a reception room, separate kitchen, double bedroom and bathroom. The raised ground floor position provides good natural light and an open outlook towards the park.

Paddington Recreation Ground and Regent's Canal are both within walking distance, offering access to open space and walking routes.







Essendine Road, W9
Approximate Area = 431 sq ft / 40 sq m
For identification only - Not to scale

Particulars

Property

Essendine Mansions, Essendine Road, Maida Vale, London
~~£~~5,000

Rooms

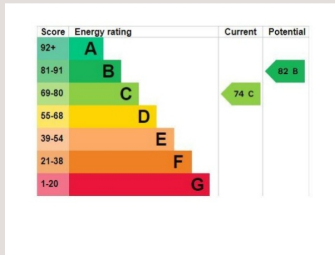


Features

- High Ceilings
- Stunning one bedroom apartment
- Across the road from Paddington Rec
- Close to Maida Vale Station

Information

Council Tax



Oliver Kent

oliver.kent@vitaproperties.uk
+4477 7274 0351



Scan for our website





T: +4420 7759 2199

E: enquiries@vitaproperties.uk

Disclaimer: These particulars are prepared as a general guide for prospective purchasers or tenants and do not constitute, nor constitute part of, an offer or contract. All statements, descriptions, and measurements contained herein are given in good faith and are believed to be correct at the time of printing, but any intending purchaser or tenant should not rely on them as statements or representations of fact and must satisfy themselves by inspection or otherwise as to their correctness. Floor plans and photographs are for illustrative purposes only and may not be to scale. The position and size of doors, windows, appliances, and other features are approximate. Anti-Money Laundering (AML): In line with the Money Laundering, Terrorist Financing and Transfer of Funds Regulations 2017, we are required to carry out customer due diligence checks. Buyers/tenants will be asked to provide proof of identity, address, and source of funds before a sale or rental can be agreed. Data Protection (GDPR): Personal information supplied to Vita Properties will be processed in accordance with the General Data Protection Regulation (GDPR). Your details may be retained for legitimate business purposes relating to property services. Full details of our Privacy Policy are available on request.

All rights reserved.