



Park Village West  
REGENTS PARK, LONDON NW1  
£15,000



Spanning four floors, the 2,781 sq.ft (258.35 sq.m.) of flexible living space is complemented by a generous 3,500 sq.ft outdoor oasis, perfect for both relaxation and entertainment.

The property has recently undergone a stunning redecoration, presenting a fresh and sophisticated aesthetic throughout. The interior features a spacious principal bedroom with a dressing room and ensuite bathroom, three additional bedrooms, a versatile study/fifth bedroom, a shower room, wet room, and steam room. Enhancing convenience, there are two separate WC's strategically placed within the home.

The modern kitchen is flooded with natural light, creating an inviting atmosphere for culinary endeavors. A private patio area offers a serene escape, while the expansive reception room and dining area, complete with a dumbwaiter service lift, provide ample space for social gatherings.

Nestled in Park Village West, just moments away from Regent's Park, this property offers proximity to an array of recreational facilities, including the Zoological Gardens, Open Air Theatre, Queen Mary's Gardens, and more. For ease of commute, Great Portland Street and Camden Town Underground stations are conveniently located within 0.8 and 0.5 miles, respectively.





This extraordinary residence not only captivates with its period charm but also caters to modern lifestyles with air conditioning, a utility room, and staff accommodation. Whether for long or short-term lease, this unfurnished gem promises a lifestyle of sophistication and comfort. Secure gated entrance ensures privacy, making this Nash villa the ultimate haven in the heart of London. EPC Rating: D. Don't miss the opportunity to make this exceptional property your home. Contact us now to arrange a viewing!









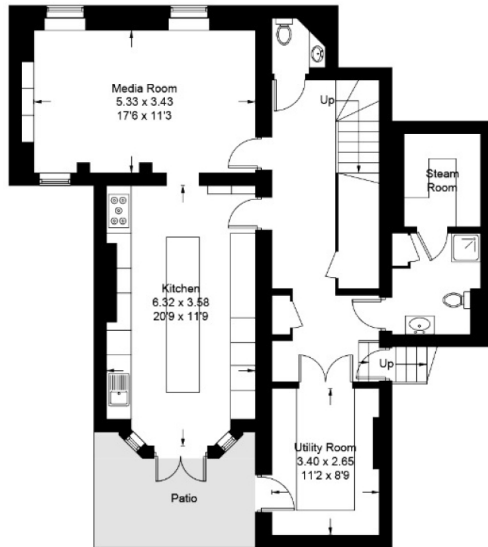
Scan for out video walkthrough



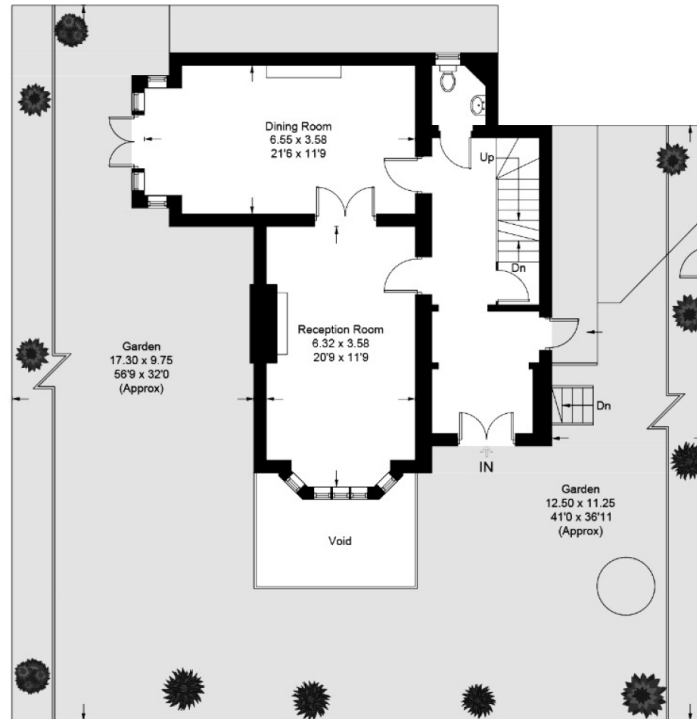
# Park Village West, NW1



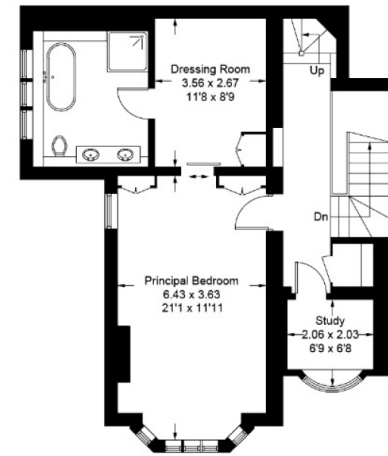
Approximate Gross Internal Area = 258.3 sq m / 2781 sq ft



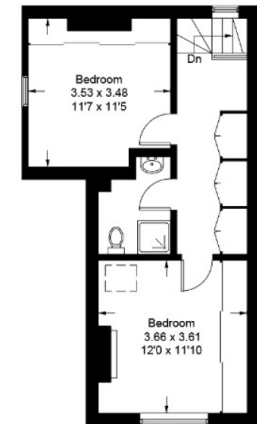
Lower Ground Floor



Ground Floor



First Floor



Second Floor

# Particulars

## Property

Park Village West, Regents Park, London NW1  
£15,000

## Rooms



2



3



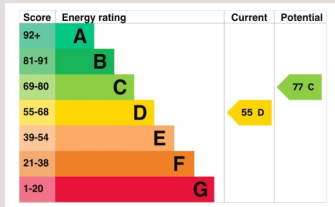
5

## Information

Council Tax

## Features

- 3 Bedrooms : Bedroom 4/Media Room : Bedroom 5/Study
- Reception Room : Dining Room : Kitchen : Utility Room : Steam Room : Garden
- 2 Shower Rooms : En Suite Bathroom : 2 Guest WCs
- Air Conditioning : CCTV : Video Entry



Oliver Kent

oliver.kent@vitaproperties.uk  
+4477 7274 0351



Scan for our website





T: +4420 7759 2199

E: [enquiries@vitaproperties.uk](mailto:enquiries@vitaproperties.uk)

Disclaimer: These particulars are prepared as a general guide for prospective purchasers or tenants and do not constitute, nor constitute part of, an offer or contract. All statements, descriptions, and measurements contained herein are given in good faith and are believed to be correct at the time of printing, but any intending purchaser or tenant should not rely on them as statements or representations of fact and must satisfy themselves by inspection or otherwise as to their correctness. Floor plans and photographs are for illustrative purposes only and may not be to scale. The position and size of doors, windows, appliances, and other features are approximate. Anti-Money Laundering (AML): In line with the Money Laundering, Terrorist Financing and Transfer of Funds Regulations 2017, we are required to carry out customer due diligence checks. Buyers/tenants will be asked to provide proof of identity, address, and source of funds before a sale or rental can be agreed. Data Protection (GDPR): Personal information supplied to Vita Properties will be processed in accordance with the General Data Protection Regulation (GDPR). Your details may be retained for legitimate business purposes relating to property services. Full details of our Privacy Policy are available on request.

All rights reserved.