



## Hillside Close

ST JOHNS WOOD, LONDON, NW8

£20,000



This distinguished five-bedroom house in St John's Wood presents an exceptional opportunity for those seeking a refined London residence. Exuding an understated elegance and architectural brilliance, the property offers a private and secure environment, reflecting the discerning character of its locale. Its position allows for lateral living, a highly sought-after attribute in this desirable postcode.

The interior spaces are thoughtfully appointed, beginning with generous reception rooms that provide ample space for both formal entertaining and relaxed family life. High specifications are evident throughout, from the custom staircase, a true centrepiece, to the meticulous finishes that define each area. The design ensures an abundance of natural light, enhancing the sense of space and calm.

Upstairs, five well-proportioned bedrooms offer comfortable accommodation, complemented by three modern bathrooms & a marble guest WC. These private quarters maintain the property's consistent standard of quality and design, providing a serene retreat from city life.

Quietly positioned, this residence is moments from the charming canals of Little Venice, the vibrant atmosphere of Maida Vale, and the established community of St John's Wood.







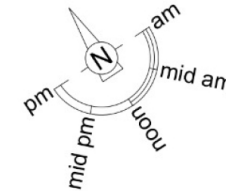
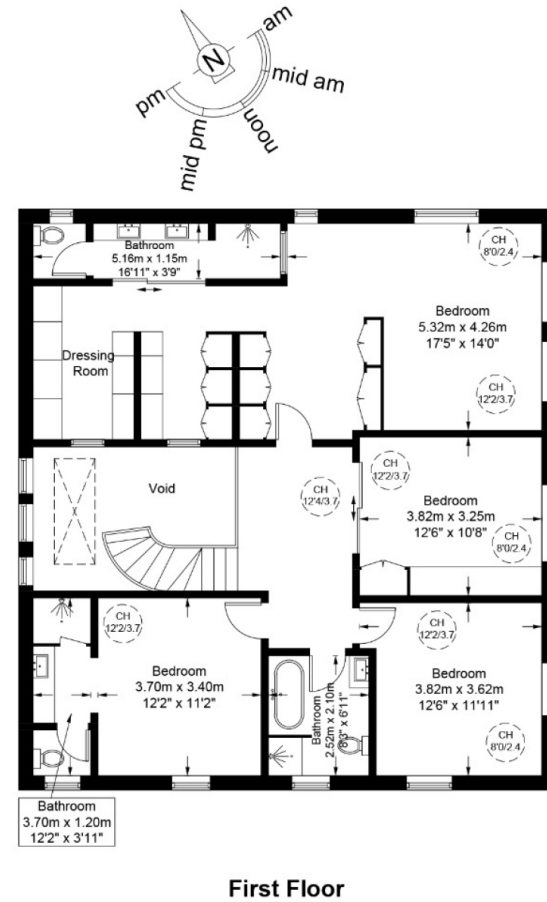
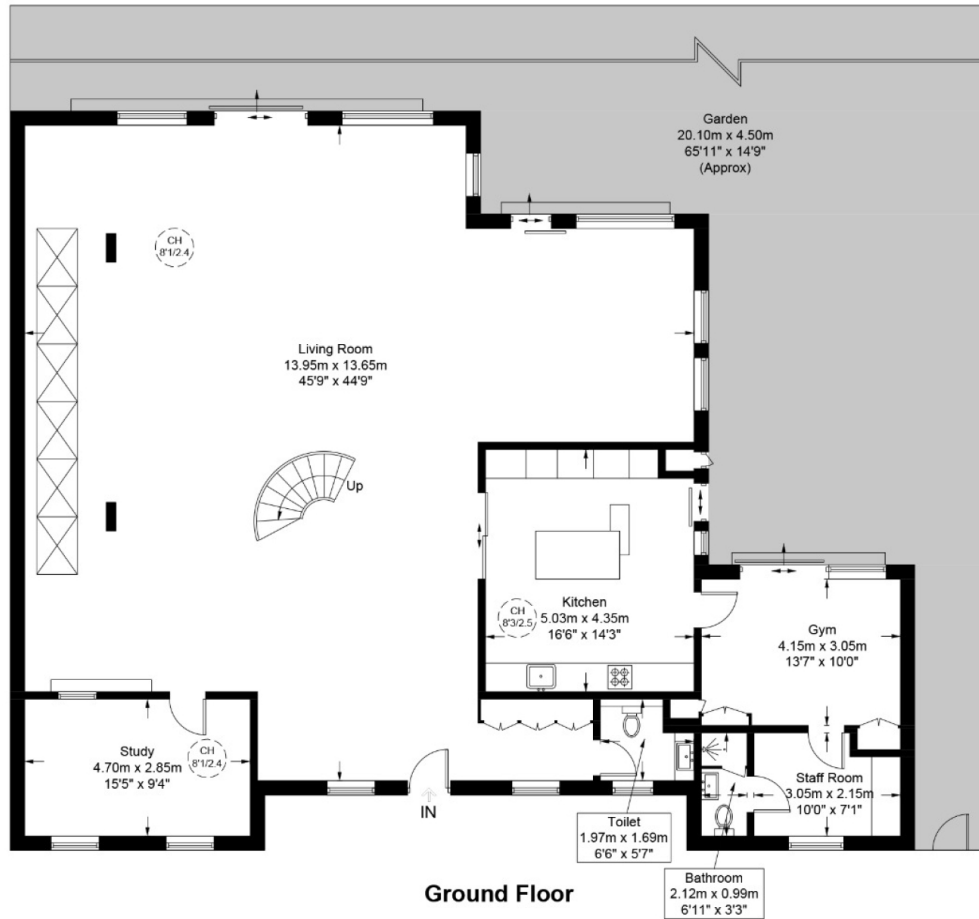




# Hillside Close, NW8

Approximate Gross Internal Area = 3563 sq ft / 331.0 sq m

External Cupboard = 3 sq ft / 0.3 sq m



This plan is for layout guidance only and is not drawn to scale unless stated. All dimensions, including windows, doors, and the Total Gross Internal Area (GIA), are approximate. For precise measurements, please consult a qualified architect or surveyor before making any decisions based on this plan.



# Particulars

## Property

Hillside Close, St Johns Wood, London, NW8  
£20,000

## Rooms



2



3



5

## Features

- Exuding elegance and architectural brilliance
- Custom Staircase
- Lateral Living
- Private and Secure

## Information

Council Tax



Oliver Kent

oliver.kent@vitaproperties.uk  
+4477 7274 0351



Scan for our website





T: +4420 7759 2199

E: [enquiries@vitaproperties.uk](mailto:enquiries@vitaproperties.uk)

Disclaimer: These particulars are prepared as a general guide for prospective purchasers or tenants and do not constitute, nor constitute part of, an offer or contract. All statements, descriptions, and measurements contained herein are given in good faith and are believed to be correct at the time of printing, but any intending purchaser or tenant should not rely on them as statements or representations of fact and must satisfy themselves by inspection or otherwise as to their correctness. Floor plans and photographs are for illustrative purposes only and may not be to scale. The position and size of doors, windows, appliances, and other features are approximate. Anti-Money Laundering (AML): In line with the Money Laundering, Terrorist Financing and Transfer of Funds Regulations 2017, we are required to carry out customer due diligence checks. Buyers/tenants will be asked to provide proof of identity, address, and source of funds before a sale or rental can be agreed. Data Protection (GDPR): Personal information supplied to Vita Properties will be processed in accordance with the General Data Protection Regulation (GDPR). Your details may be retained for legitimate business purposes relating to property services. Full details of our Privacy Policy are available on request.

All rights reserved.