



Wellington Close  
NOTTING HILL, LONDON W11

£3,000,000



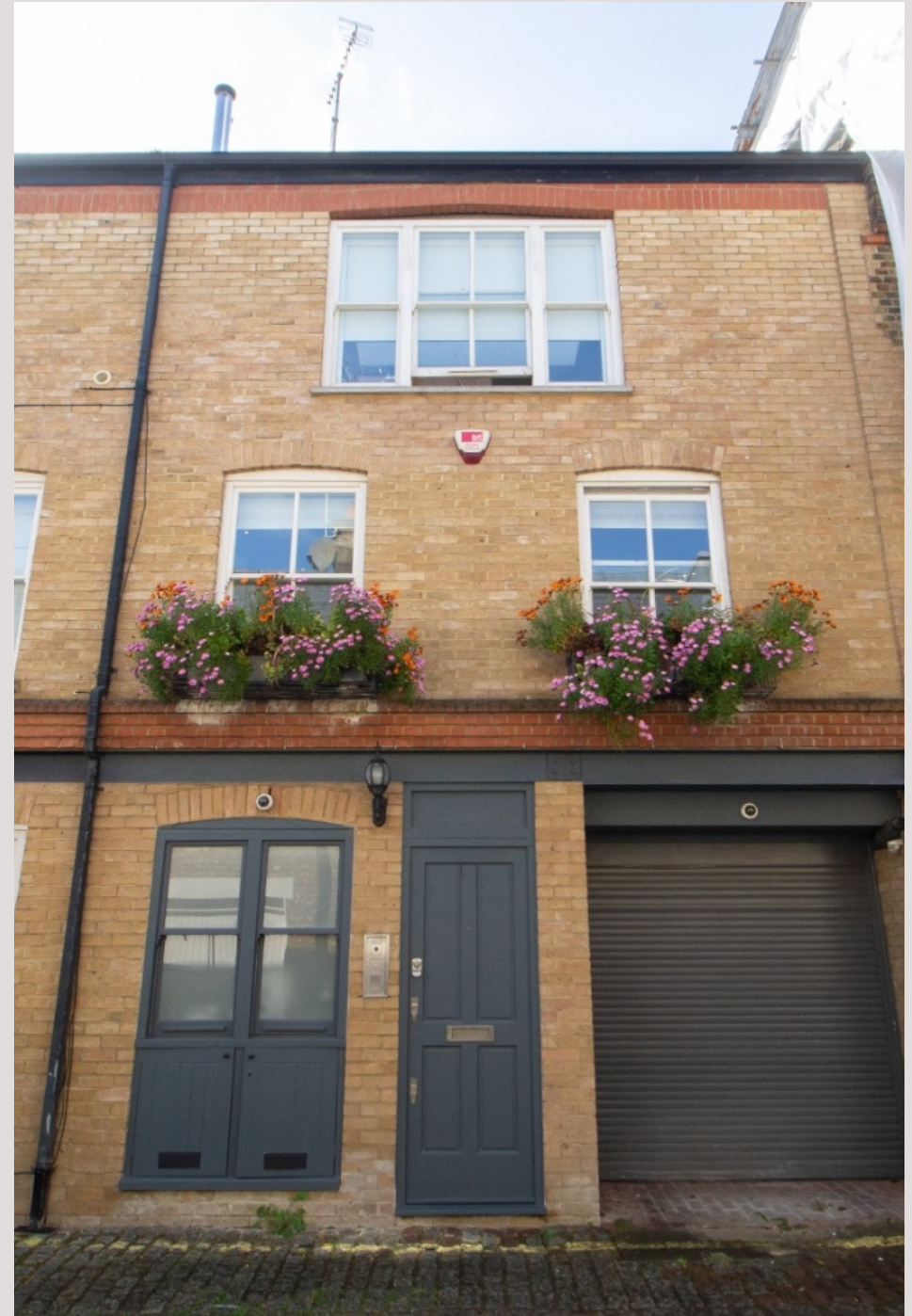
Tucked away on a charming mews just moments from Ledbury Road and Westbourne Grove, this beautifully designed home is arranged over five floors and offers light filled interiors with a strong emphasis on entertaining.

Upon entering, you are welcomed into a generous foyer with double sliding doors opening to the internal garage. This versatile space has been cleverly redesigned to function as a gym, office, or additional entertaining area. A guest bathroom and separate laundry room complete the ground floor.

A striking cantilevered glass staircase, imported from Italy, connects all levels and allows natural light to flow throughout the house.

The basement level features a large cinema room with an arched ceiling, projector, full shower room, bar area, and ample storage. An internal glass wall can be converted to a fully frosted screen, providing complete privacy—ideal for use as guest accommodation if required. A half landing hosts a dedicated office space with fitted desks and shelving.

The first floor is home to an elegant open plan kitchen, living, and dining area, complete with bespoke joinery and a fireplace. On the second floor, there is a principal bedroom with a full en suite bathroom. The top floor offers a further





Throughout the property, there is air conditioning and integrated Sonos speakers on every floor, including the terrace.  
Find the content on Instagram @Kate\_the\_agent





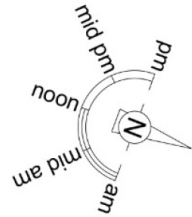




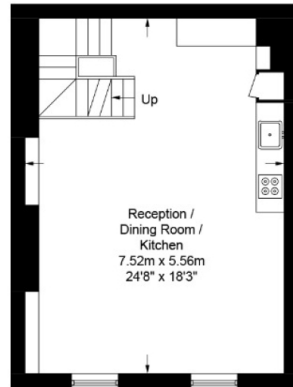
# Wellington Close, W11

Approximate Gross Internal Area = 2080 sq ft / 193.2 sq m

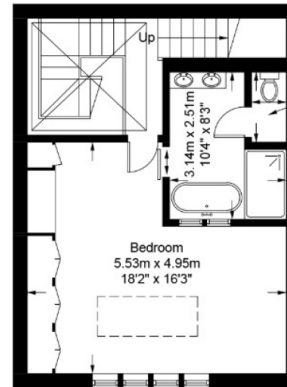
Restricted Height = 50 sq ft / 4.7 sq m



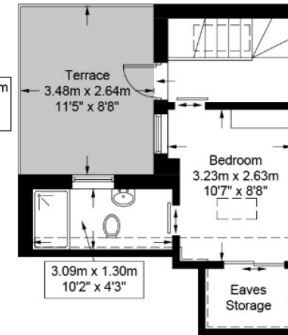
= Reduced headroom below 1.5m / 5'0"



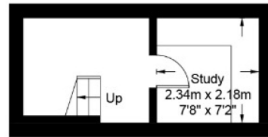
First Floor



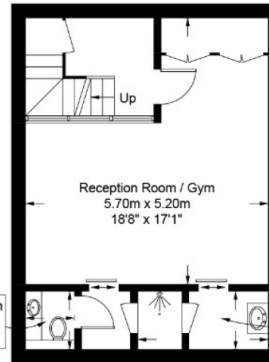
Second Floor



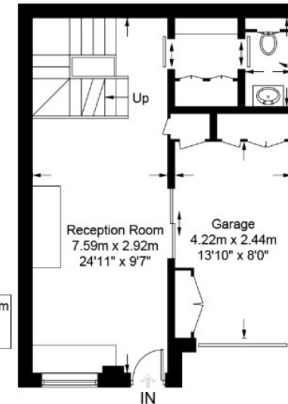
Third Floor



Lower Ground Floor



Basement



Ground Floor

1.22m x 1.05m  
4'0" x 3'5"  
(Approx)

2.80m x 1.22m  
9'2" x 4'0"  
(Approx)

1.90m x 0.96m  
6'3" x 3'3"

This plan is for layout guidance only and is not drawn to scale unless stated. All dimensions, including windows, doors, and the Total Gross Internal Area (GIA), are approximate. For precise measurements, please consult a qualified architect or surveyor before making any decisions based on this plan.



# Particulars

## Property

Wellington Close, Notting Hill, London W11  
£3,000,000

## Rooms



2



3



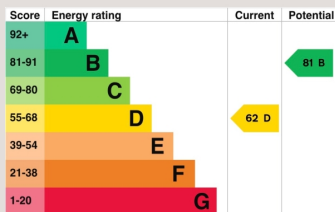
3

## Features

- Stunning mews house
- Footsteps to Westbourne Grove
- 2-3 bedrooms, 3.5 bathrooms
- 3 entertaining space plus office

## Information

Council Tax



Kate Brookfield

[Kate.brookfield@vitaproperties.uk](mailto:Kate.brookfield@vitaproperties.uk)

+4478 1365 5431



Scan for our website





T: +4420 7759 2199

E: [enquiries@vitaproperties.uk](mailto:enquiries@vitaproperties.uk)

Disclaimer: These particulars are prepared as a general guide for prospective purchasers or tenants and do not constitute, nor constitute part of, an offer or contract. All statements, descriptions, and measurements contained herein are given in good faith and are believed to be correct at the time of printing, but any intending purchaser or tenant should not rely on them as statements or representations of fact and must satisfy themselves by inspection or otherwise as to their correctness. Floor plans and photographs are for illustrative purposes only and may not be to scale. The position and size of doors, windows, appliances, and other features are approximate. Anti-Money Laundering (AML): In line with the Money Laundering, Terrorist Financing and Transfer of Funds Regulations 2017, we are required to carry out customer due diligence checks. Buyers/tenants will be asked to provide proof of identity, address, and source of funds before a sale or rental can be agreed. Data Protection (GDPR): Personal information supplied to Vita Properties will be processed in accordance with the General Data Protection Regulation (GDPR). Your details may be retained for legitimate business purposes relating to property services. Full details of our Privacy Policy are available on request.

All rights reserved.