



St. Edmunds Terrace
PRIMROSE HILL. LONDON NW8

£22,533



This luxurious three-bedroom lateral apartment is situated on the second floor of this exclusive gated block set within contemporary courtyard gardens and surrounded by the green open spaces of Primrose Hill and Regents Park. Luxury living is epitomised by the award-winning architecture, thoughtfully designed interiors and world-class specification and facilities. The spacious accommodation has been designed with entertaining in mind providing expansive living space and complete privacy.

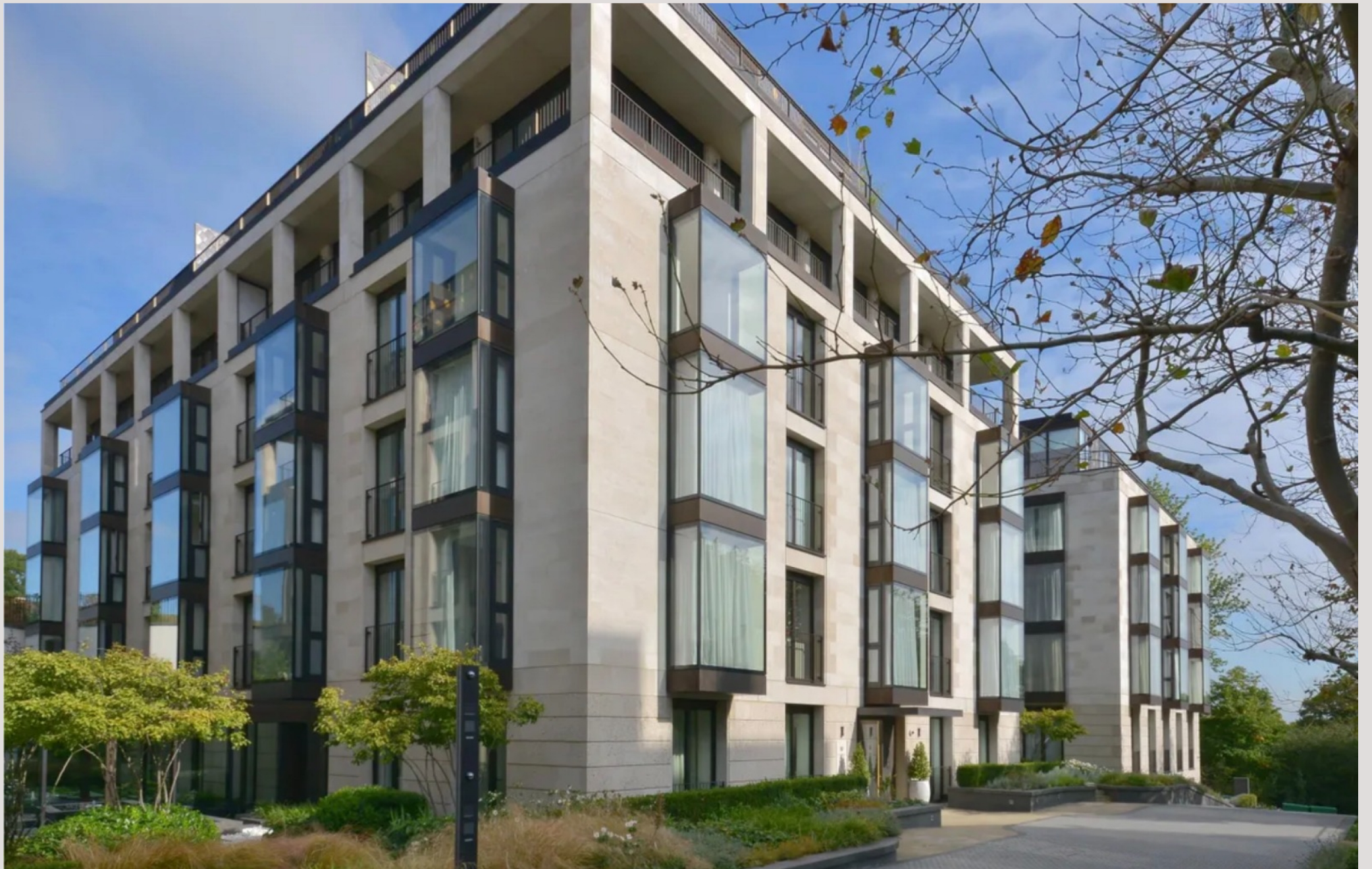
The development boasts numerous benefits including a 24-hour concierge, secure underground parking and five star spa & leisure facilities that include a 20 metre swimming pool, steam room and state of the art gymnasium.

Located in the desirable and exclusive village of Primrose Hill, the vibrant yet charming area offers access to numerous cafes, restaurants, galleries and shops with Regents Park Road and St John's Wood Road only a short stroll away. St Edmunds Terrace is also within easy reach of good transport links with St John's Wood Underground station (Jubilee line) only a short walk away.



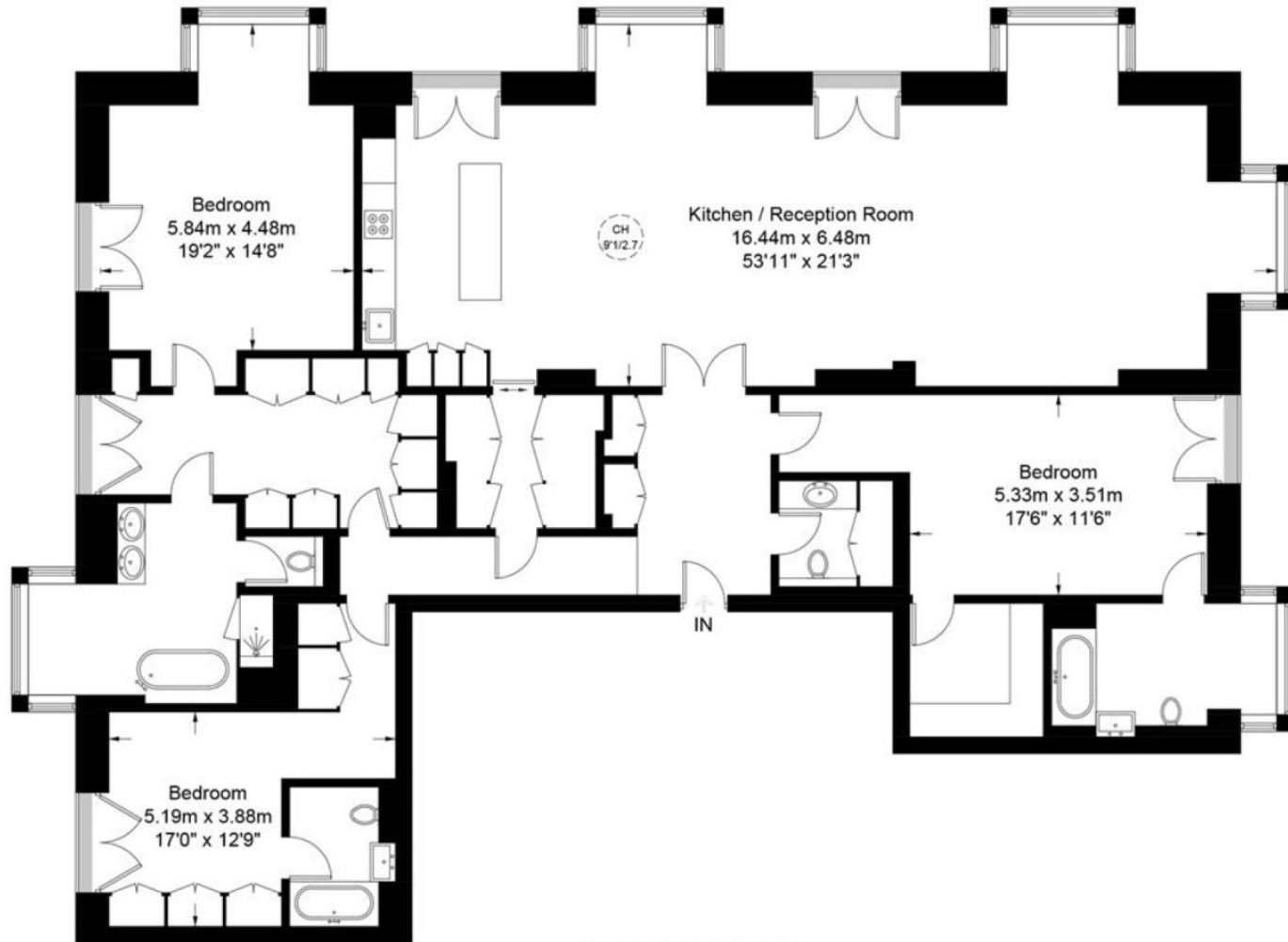
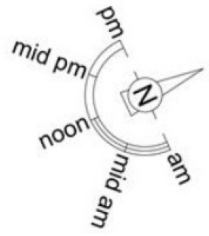






St. Edmunds Terrace, NW8

Approximate Gross Internal Area = 2539 sq ft / 235.9 sq m



Second Floor

Particulars

Property

St. Edmunds Terrace, Primrose Hill. London NW8
£22,533

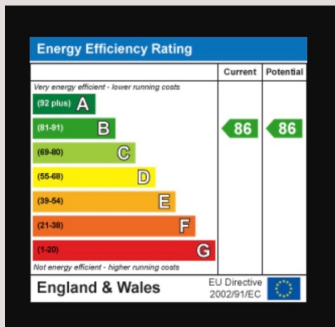
Rooms



Features

Information

Council Tax



Oliver Kent

oliver.kent@vitaproperties.uk
+4477 7274 0351



Scan for our website





T: +4420 7759 2199

E: enquiries@vitaproperties.uk

Disclaimer: These particulars are prepared as a general guide for prospective purchasers or tenants and do not constitute, nor constitute part of, an offer or contract. All statements, descriptions, and measurements contained herein are given in good faith and are believed to be correct at the time of printing, but any intending purchaser or tenant should not rely on them as statements or representations of fact and must satisfy themselves by inspection or otherwise as to their correctness. Floor plans and photographs are for illustrative purposes only and may not be to scale. The position and size of doors, windows, appliances, and other features are approximate. Anti-Money Laundering (AML): In line with the Money Laundering, Terrorist Financing and Transfer of Funds Regulations 2017, we are required to carry out customer due diligence checks. Buyers/tenants will be asked to provide proof of identity, address, and source of funds before a sale or rental can be agreed. Data Protection (GDPR): Personal information supplied to Vita Properties will be processed in accordance with the General Data Protection Regulation (GDPR). Your details may be retained for legitimate business purposes relating to property services. Full details of our Privacy Policy are available on request.

All rights reserved.