



Penthouse

SHEPHERDESS WALK, HOXTON, LONDON N1

£2,250,000



Set within the highly sought-after Shepherdess Walk Buildings, this exceptional three-bedroom penthouse occupies the fourth floor of a characterful former Victorian warehouse, converted in the mid-1990s, and offers over 2,200 sq ft of impressive internal space.

Positioned favourably within the building, the apartment combines authentic warehouse features with contemporary finishes. Original Crittall-style doors and generous proportions run throughout, creating a sense of volume and light rarely found. The principal bedroom benefits from an en-suite, complemented by a second double bedroom and a versatile third bedroom, currently arranged as a study/guest room. In total, the property offers three bathrooms, including a recently installed utility/guest bathroom completed prior to Christmas.

The living and entertaining space is particularly striking, with well-defined areas and a seamless flow throughout. A standout feature is the spiral staircase leading to a spectacular private roof terrace, offering far-reaching views across the London skyline – an exceptional setting for both entertaining and quiet enjoyment.





Further benefits include lift access, one secure underground parking space, and a share of the freehold.

Ideally located for access into the City, the property sits between Islington and Clerkenwell, with Shoreditch and Hoxton also within easy reach. Angel and Old Street Underground stations (Northern Line) are both close by, alongside a wide array of cafés, restaurants and amenities including Pophams Bakery, William IV Pub and The Duke of Cambridge. The nearby Regent's Canal offers scenic walks towards Broadway Market and beyond. Set within the design district with kvadrat and hay showrooms close by.

A rare opportunity to acquire a substantial and characterful penthouse in one of East London's most vibrant and well-connected locations.







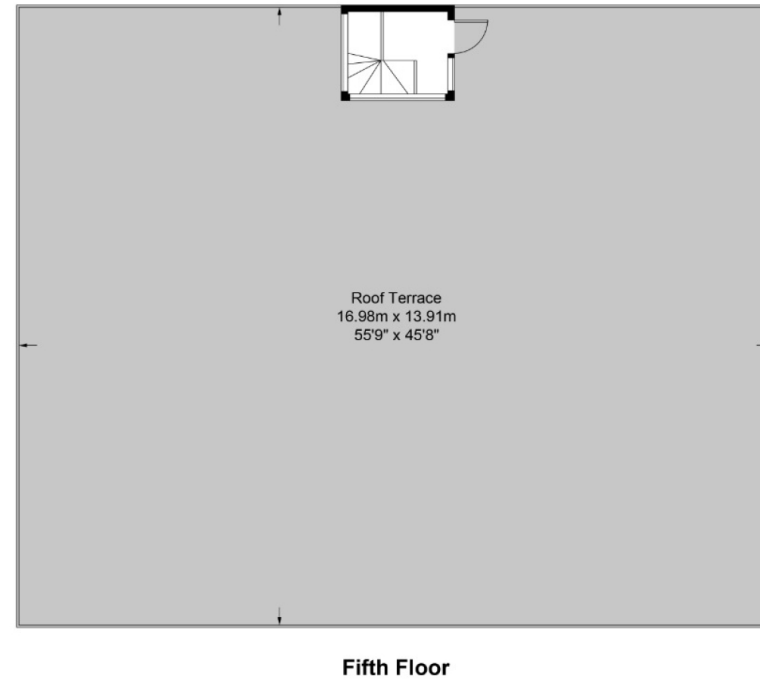
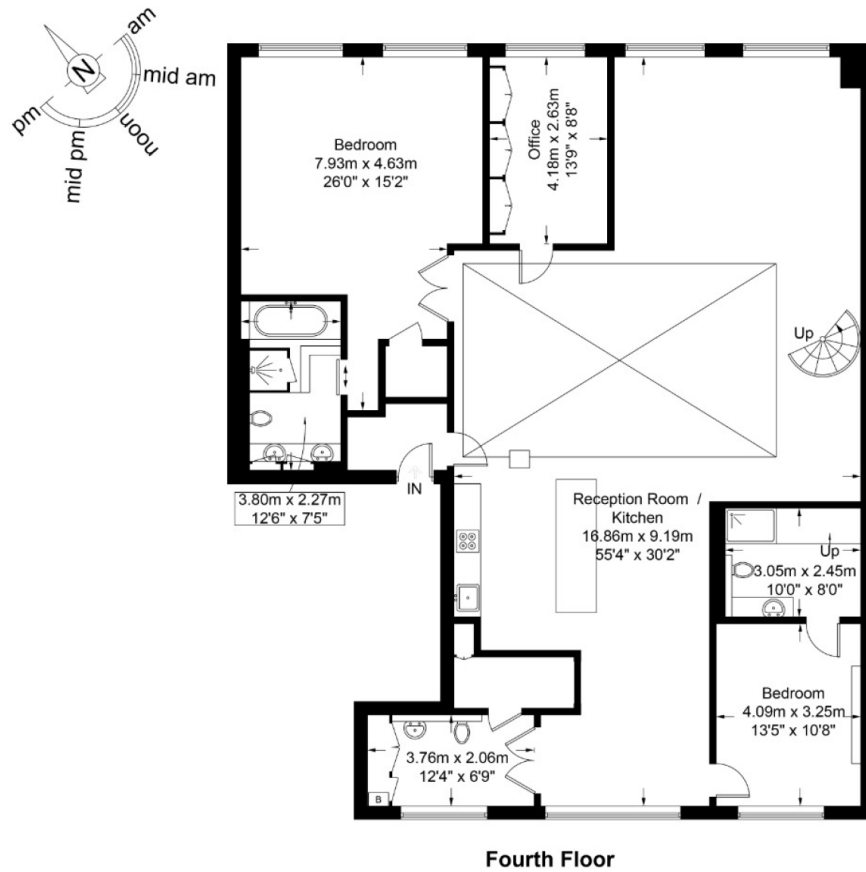


Scan for out video walkthrough



Shepherdess Walk, N1

Approximate Gross Internal Area = 2229 sq ft / 207.1 sq m



This plan is for layout guidance only and is not drawn to scale unless stated. All dimensions, including windows, doors, and the Total Gross Internal Area (GIA), are approximate. For precise measurements, please consult a qualified architect or surveyor before making any decisions based on this plan.



Particulars

Property

Penthouse, Shepherdess Walk, Hoxton, London N1
£2,250,000

Rooms

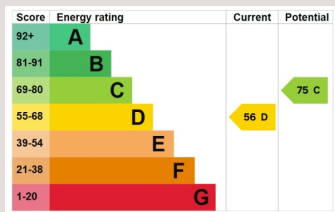


Features

- Incredible Views from Roof Top Terrace
- Super Bright and Airy
- Share of Freehold
- Penthouse

Information

Council Tax



Oliver Kent

oliver.kent@vitaproperties.uk
+4477 7274 0351



Scan for our website





T: +4420 7759 2199
E: enquiries@vitaproperties.uk

Disclaimer: These particulars are prepared as a general guide for prospective purchasers or tenants and do not constitute, nor constitute part of, an offer or contract. All statements, descriptions, and measurements contained herein are given in good faith and are believed to be correct at the time of printing, but any intending purchaser or tenant should not rely on them as statements or representations of fact and must satisfy themselves by inspection or otherwise as to their correctness. Floor plans and photographs are for illustrative purposes only and may not be to scale. The position and size of doors, windows, appliances, and other features are approximate. Anti-Money Laundering (AML): In line with the Money Laundering, Terrorist Financing and Transfer of Funds Regulations 2017, we are required to carry out customer due diligence checks. Buyers/tenants will be asked to provide proof of identity, address, and source of funds before a sale or rental can be agreed. Data Protection (GDPR): Personal information supplied to Vita Properties will be processed in accordance with the General Data Protection Regulation (GDPR). Your details may be retained for legitimate business purposes relating to property services. Full details of our Privacy Policy are available on request.

All rights reserved.