



Priory Road

SOUTH HAMPSTEAD, LONDON NW6

£2,000



This charming one-bedroom, first-floor flat on Priory Road presents an excellent opportunity to reside in a sought-after South Hampstead location. The property offers a bright open living space, designed for comfortable living, and benefits from an abundance of natural light throughout.

The generous reception room flows seamlessly into the kitchen area, creating an inviting layout. The large double bedroom provides a large space, complemented by built-in storage, ensuring a clutter-free environment. A well-maintained bathroom serves the flat, completing the internal accommodation.

Quietly positioned, this residence is just seconds from West Hampstead's Jubilee, Overground, and Thameslink stations, offering swift connections across London. The vibrant array of local shops, cafes, and amenities are also on the doorstep, providing convenience and a lively community feel. Finchley Road is moments away, further enhancing transport options and access to larger retail outlets. This property is available from 24th April 2026.





This charming one-bedroom, first-floor flat on Priory Road presents an excellent opportunity to reside in a sought-after South Hampstead location. The property offers a bright open living space, designed for comfortable living, and benefits from an abundance of natural light throughout.

The generous reception room flows seamlessly into the kitchen area, creating an inviting layout. The large double bedroom provides a large space, complemented by built-in storage, ensuring a clutter-free environment. A well-maintained bathroom serves the flat, completing the internal accommodation.

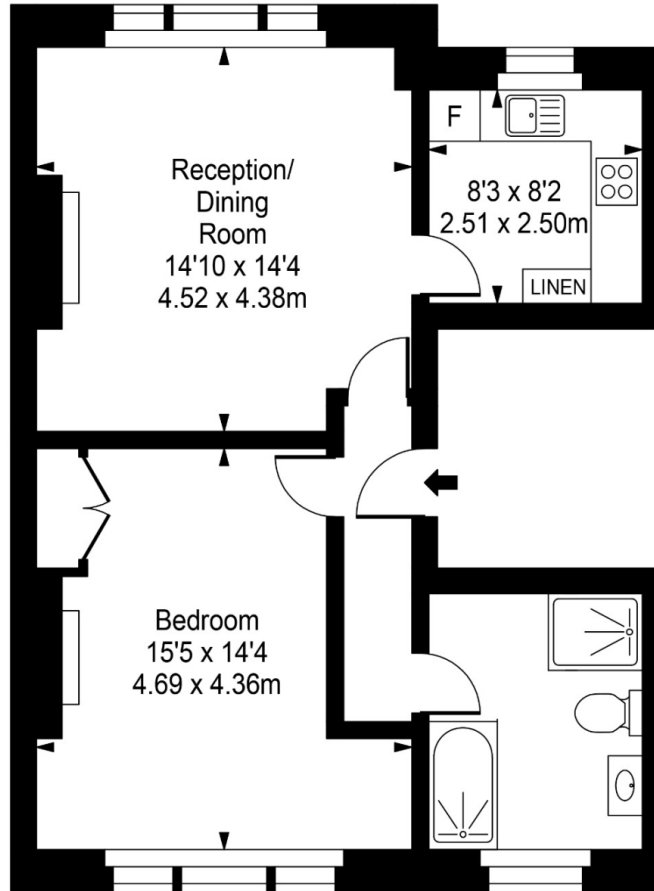
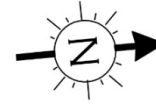
Quietly positioned, this residence is just seconds from West Hampstead's Jubilee, Overground, and Thameslink stations, offering swift connections across London. The vibrant array of local shops, cafes, and amenities are also on the doorstep, providing convenience and a lively community feel. Finchley Road is moments away, further enhancing transport options and access to larger retail outlets. This property is available from 24th April 2026.







Priory Road



First Floor

Approx Gross Internal Area **604 Sq Ft - 56.11 Sq M**

FOR ILLUSTRATIVE PURPOSES ONLY. NOT TO SCALE.

Whilst every attempt has been made to ensure the accuracy of the floorplan shown, all measurements, positioning, fixtures, fittings and any other data shown are an approximate interpretation for illustrative purposes only and are not to scale. No responsibility is taken for any error, omission, misstatement or use of data shown.

Floor plan by www.bestangle.co.uk

Particulars

Property

Priory Road, South Hampstead, London NW6
£2,000

Rooms

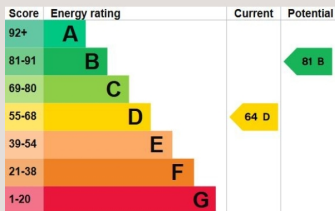


Features

- Bright Open Living Space
- Large Double Bedroom
- Built in Storage
- Seconds to West Hampstead Tubes, Shops and Cafes

Information

Council Tax



Oliver Kent

oliver.kent@vitaproperties.uk
+4477 7274 0351



Scan for our website





T: +4420 7759 2199
E: enquiries@vitaproperties.uk

Disclaimer: These particulars are prepared as a general guide for prospective purchasers or tenants and do not constitute, nor constitute part of, an offer or contract. All statements, descriptions, and measurements contained herein are given in good faith and are believed to be correct at the time of printing, but any intending purchaser or tenant should not rely on them as statements or representations of fact and must satisfy themselves by inspection or otherwise as to their correctness. Floor plans and photographs are for illustrative purposes only and may not be to scale. The position and size of doors, windows, appliances, and other features are approximate. Anti-Money Laundering (AML): In line with the Money Laundering, Terrorist Financing and Transfer of Funds Regulations 2017, we are required to carry out customer due diligence checks. Buyers/tenants will be asked to provide proof of identity, address, and source of funds before a sale or rental can be agreed. Data Protection (GDPR): Personal information supplied to Vita Properties will be processed in accordance with the General Data Protection Regulation (GDPR). Your details may be retained for legitimate business purposes relating to property services. Full details of our Privacy Policy are available on request.

All rights reserved.