



Glenilla Road

BELSIZE PARK, LONDON NW3

£1,000,000



An exceptional opportunity presents itself within Sussex House, a distinguished apartment building nestled in the vibrant heart of Belsize Park. This second-floor residence, accessible via a secure lift, offers a rare chance to acquire a substantial two-bedroom, two-bathroom property extending to over 900 square feet.

The apartment features a generous reception room, providing ample space for both relaxation and entertaining. The thoughtfully appointed layout ensures a comfortable and practical living environment, reflecting the quality expected within this desirable postcode. Natural light enhances the interior, creating an inviting atmosphere throughout.

Accommodation comprises two well-proportioned bedrooms, alongside two contemporary bathrooms, offering privacy and convenience. The design prioritises ease of living, making this an appealing home for those seeking lateral living in a prime London location.

Residents benefit from access to beautifully maintained communal gardens, offering a tranquil escape from city life. The property's enviable position ensures immediate proximity to Belsize Park's high street, with its array of independent shops, cafes, and restaurants. Excellent transport links are moments away, providing swift access





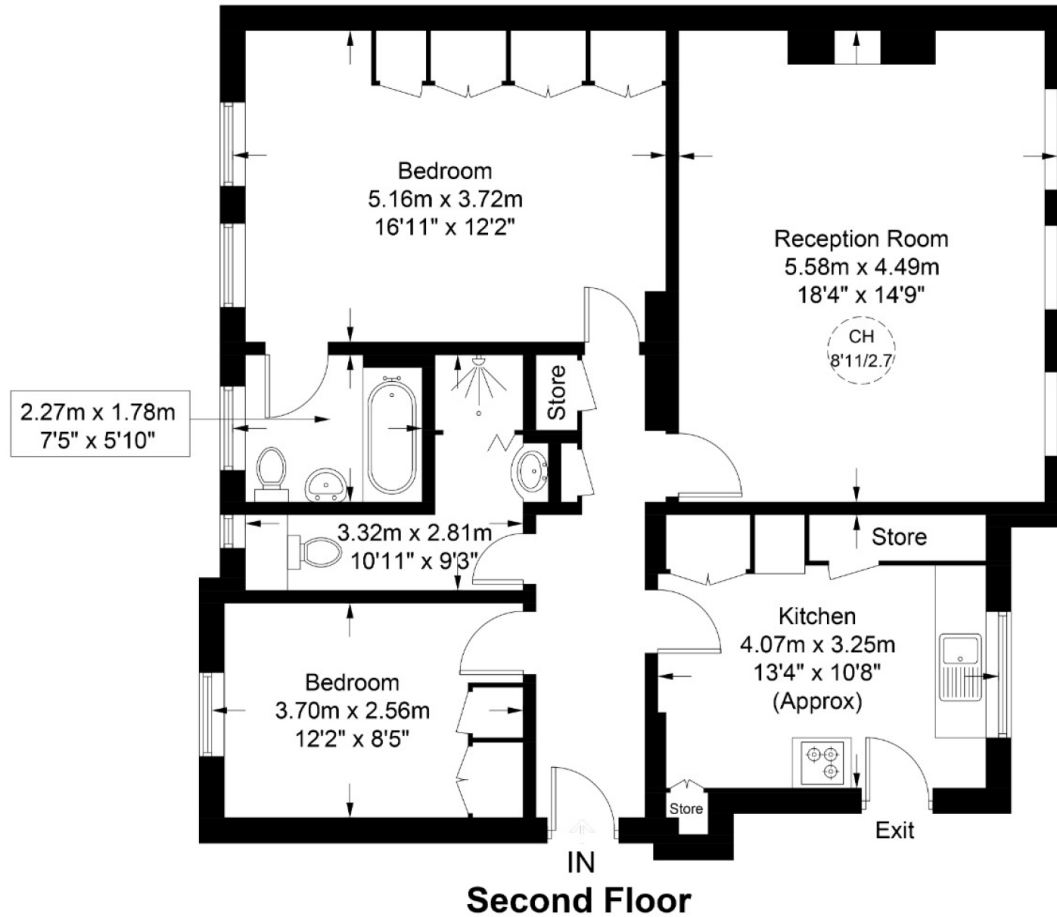
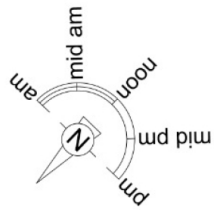






Sussex House, NW3

Approximate Gross Internal Area = 926 sq ft / 86.0 sq m



This plan is for layout guidance only and is not drawn to scale unless stated. All dimensions, including windows, doors, and the Total Gross Internal Area (GIA), are approximate. For precise measurements, please consult a qualified architect or surveyor before making any decisions based on this plan.



Particulars

Property

Glenilla Road, Belsize Park, London NW3
£1,000,000

Rooms

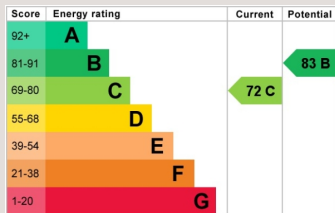


Features

- Very Rare Opportunity
- Close to Transport and High street
- Second floor with lift for security and ease
- Stunning Communal Gardens

Information

Council Tax



Oliver Kent

oliver.kent@vitaproperties.uk
+4477 7274 0351



Scan for our website





T: +4420 7759 2199

E: enquiries@vitaproperties.uk

Disclaimer: These particulars are prepared as a general guide for prospective purchasers or tenants and do not constitute, nor constitute part of, an offer or contract. All statements, descriptions, and measurements contained herein are given in good faith and are believed to be correct at the time of printing, but any intending purchaser or tenant should not rely on them as statements or representations of fact and must satisfy themselves by inspection or otherwise as to their correctness. Floor plans and photographs are for illustrative purposes only and may not be to scale. The position and size of doors, windows, appliances, and other features are approximate. Anti-Money Laundering (AML): In line with the Money Laundering, Terrorist Financing and Transfer of Funds Regulations 2017, we are required to carry out customer due diligence checks. Buyers/tenants will be asked to provide proof of identity, address, and source of funds before a sale or rental can be agreed. Data Protection (GDPR): Personal information supplied to Vita Properties will be processed in accordance with the General Data Protection Regulation (GDPR). Your details may be retained for legitimate business purposes relating to property services. Full details of our Privacy Policy are available on request.

All rights reserved.