



St. James Mansions

WEST END LANE, WEST HAMPSTEAD, LONDON NW6

£1,300,000



Situated within the highly revered St James Mansions and commanding what is arguably the best position in the entire building, this home delivers outstanding interiors and full south and west facing views across London.

Fully renovated in 2020 in conjunction with Ulterior's talented design team, this apartment embraces a 'modern-classic' finish, sympathetic to the Victorian building whilst offering an understated yet luxurious feel throughout.

Located on the third (top) floor, you enter via immaculate communal areas. Upon entering the apartment, you are welcomed into a wide entrance hallway with a direct view through to a west facing window. Lining the southerly side of the apartment, there are wonderful bedrooms with decorative ceilings and fitted storage. The hallway leads you directly to the show-stopping living space, with windows sweeping around a south-west and west-facing aspect, providing stunning sunset views.

The accommodation continues around to the westerly section of the home, featuring two beautifully finished bathrooms and an exceptional kitchen/dining room complete with handmade cabinetry, white Carrara marble worktops, and a central dining space.





All joinery throughout is bespoke, and the carefully considered colour scheme complements every area of this home perfectly. This is truly one of a kind.

St James Mansions is situated just moments from all transport links and amenities in West Hampstead. The area provides an excellent base for anyone needing quick access to central London, as well as direct links to major London airports. Nearby Regent's Park, Primrose Hill, and Hampstead offer further lifestyle appeal, along with beautiful green spaces including Hampstead Heath.

Guide price £1,300,000 - £1,350,000



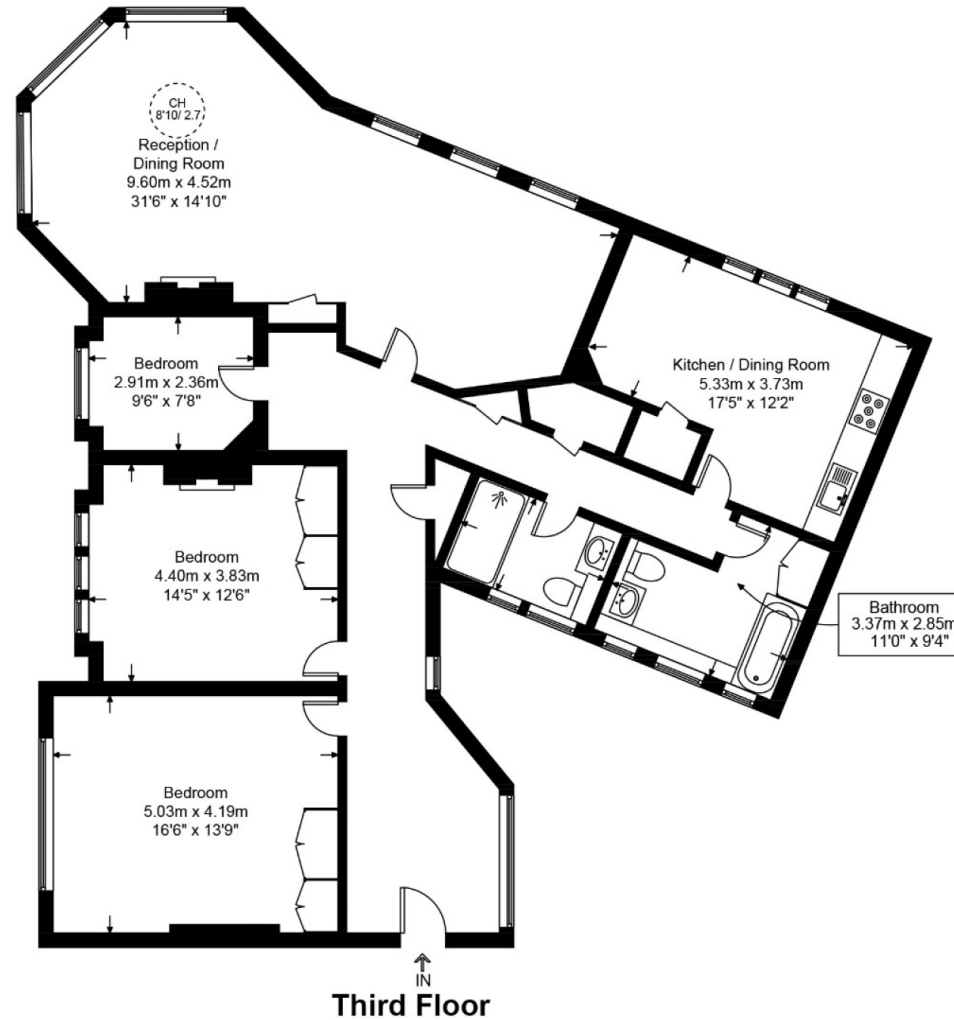
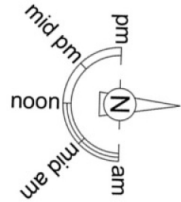






St James Mansions, NW6

Approximate Gross Internal Area = 1653 sq ft / 153.6 sq m



This plan is for layout guidance only and is not drawn to scale unless stated. All dimensions, including windows, doors, and the Total Gross Internal Area (GIA), are approximate. For precise measurements, please consult a qualified architect or surveyor before making any decisions based on this plan.



Particulars

Property

St. James Mansions, West End Lane, West Hampstead,
Eh360r0Nw6

Rooms



2



2



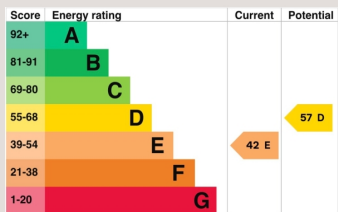
3

Features

- Outstanding interiors
- South and west facing skyline views
- Over 1650 sq ft of lateral space
- Communal gardens

Information

Council Tax



Oliver Kent

oliver.kent@vitaproperties.uk
+4477 7274 0351



Scan for our website





T: +4420 7759 2199
E: enquiries@vitaproperties.uk

Disclaimer: These particulars are prepared as a general guide for prospective purchasers or tenants and do not constitute, nor constitute part of, an offer or contract. All statements, descriptions, and measurements contained herein are given in good faith and are believed to be correct at the time of printing, but any intending purchaser or tenant should not rely on them as statements or representations of fact and must satisfy themselves by inspection or otherwise as to their correctness. Floor plans and photographs are for illustrative purposes only and may not be to scale. The position and size of doors, windows, appliances, and other features are approximate. Anti-Money Laundering (AML): In line with the Money Laundering, Terrorist Financing and Transfer of Funds Regulations 2017, we are required to carry out customer due diligence checks. Buyers/tenants will be asked to provide proof of identity, address, and source of funds before a sale or rental can be agreed. Data Protection (GDPR): Personal information supplied to Vita Properties will be processed in accordance with the General Data Protection Regulation (GDPR). Your details may be retained for legitimate business purposes relating to property services. Full details of our Privacy Policy are available on request.

All rights reserved.