



Priory Road

SOUTH HAMPSTEAD, LONDON NW6

£2,200



Situated in the sought-after area of Priory Road, London, this two-bedroom flat presents an excellent opportunity for those seeking comfortable and stylish living in the heart of the city. The property is conveniently located close to transport links, local amenities, and recreational spaces, making it an ideal choice for professionals, couples, or small families.

As you step into the flat, you are greeted by a welcoming reception area that serves as the perfect space for relaxing or entertaining guests. The neutral decor creates a sense of openness, enhanced by natural light streaming in through well-positioned windows. This space can easily be tailored to suit your personal tastes and lifestyle.

The flat boasts two generously sized bedrooms, each designed to provide a peaceful retreat at the end of a busy day. Both bedrooms feature ample space for furniture and storage solutions, ensuring a clutter-free and functional living environment. Whether used as sleeping quarters or a home office, these rooms offer flexibility to meet your needs.





The modern bathroom is fitted with quality fixtures and finishes, offering both comfort and practicality. Its sleek design features a full-sized bath with an overhead shower, a stylish sink, and a WC, all complemented by tiled walls and flooring for easy maintenance.

The kitchen is thoughtfully arranged to maximise functionality, providing sufficient space for meal preparation and everyday use. Equipped with modern appliances and storage units, this kitchen is sure to meet all your culinary requirements.

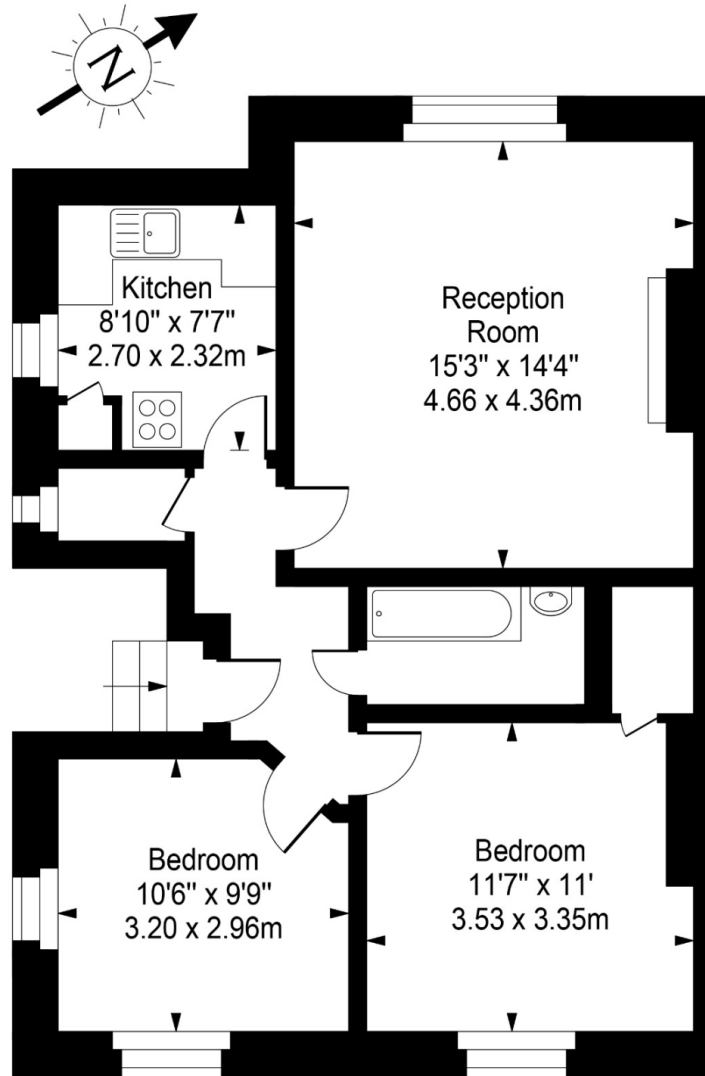
This property benefits from its prime London location on Priory Road, surrounded by a vibrant neighbourhood teeming with restaurants, cafes, shops, and cultural attractions. Excellent public transport options are within easy reach, ensuring seamless connectivity to central London and beyond.







Priory Road



Top Floor



Approx Gross Internal Area **673 Sq Ft - 62.54 Sq M**

For Illustration Purposes Only - Not To Scale
Floor plan by www.creativeplanetlk.com

Particulars

Property

Priory Road, South Hampstead, London NW6
£2,200

Rooms

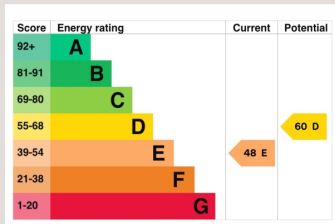


Features

- Close to Transport
- Close to Shops
- Moments from Cafe's and Resturants
- Recently Renovated

Information

Council Tax



Oliver Kent

oliver.kent@vitaproperties.uk
+4477 7274 0351



Scan for our website





T: +4420 7759 2199

E: enquiries@vitaproperties.uk

Disclaimer: These particulars are prepared as a general guide for prospective purchasers or tenants and do not constitute, nor constitute part of, an offer or contract. All statements, descriptions, and measurements contained herein are given in good faith and are believed to be correct at the time of printing, but any intending purchaser or tenant should not rely on them as statements or representations of fact and must satisfy themselves by inspection or otherwise as to their correctness. Floor plans and photographs are for illustrative purposes only and may not be to scale. The position and size of doors, windows, appliances, and other features are approximate. Anti-Money Laundering (AML): In line with the Money Laundering, Terrorist Financing and Transfer of Funds Regulations 2017, we are required to carry out customer due diligence checks. Buyers/tenants will be asked to provide proof of identity, address, and source of funds before a sale or rental can be agreed. Data Protection (GDPR): Personal information supplied to Vita Properties will be processed in accordance with the General Data Protection Regulation (GDPR). Your details may be retained for legitimate business purposes relating to property services. Full details of our Privacy Policy are available on request.

All rights reserved.