



Greencroft Gardens
SOUTH HAMPSTEAD, LONDON NW6

£2,500,000



This elegant garden apartment resides on Greencroft Gardens, a distinguished address in South Hampstead. Reflecting the area's architectural character, this residence offers a sophisticated living experience, thoughtfully appointed for comfort and style. The property presents a rare opportunity for discerning buyers seeking quality within this desirable NW6 postcode.

The interior reveals a generous reception room, providing an inviting space for relaxation and entertaining. The layout ensures a natural flow, complemented by an abundance of natural light, creating an airy and welcoming atmosphere throughout the principal living areas. The design prioritises both aesthetic appeal and practical functionality.

Three well-proportioned bedrooms are complemented by three contemporary bathrooms, offering privacy and convenience. This configuration provides versatile accommodation, suitable for a variety of lifestyles. The turn-key nature of the property ensures a seamless transition for its new owners.





Outside, a substantial private garden offers a tranquil retreat, a rare commodity in this part of London. Further enhancing its appeal, the property benefits from valuable off-street parking. Situated moments from Finchley Road tube station and its array of amenities, and within walking distance of West Hampstead, this location provides excellent transport links and access to vibrant local life. Offered chain-free, this apartment is ready for immediate occupation.







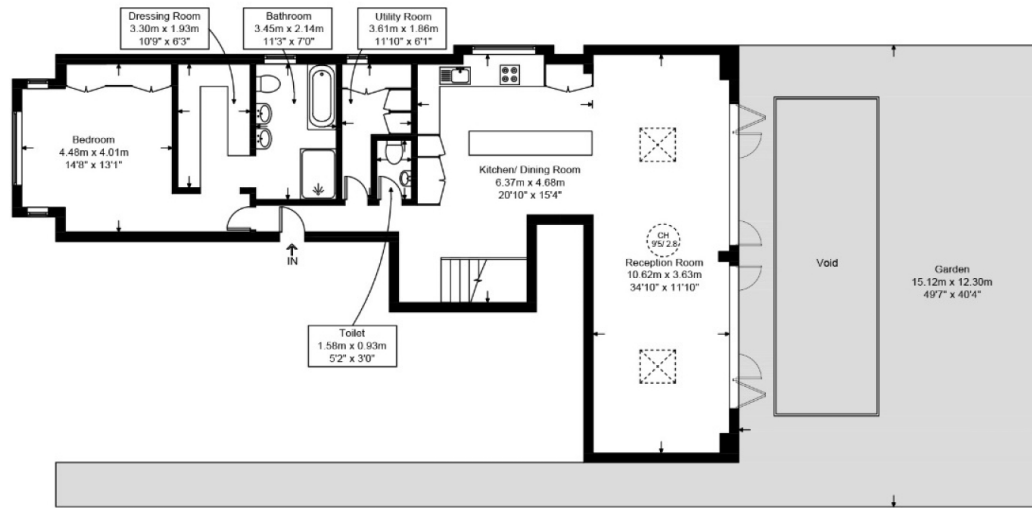
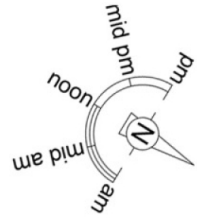


Scan for out video walkthrough

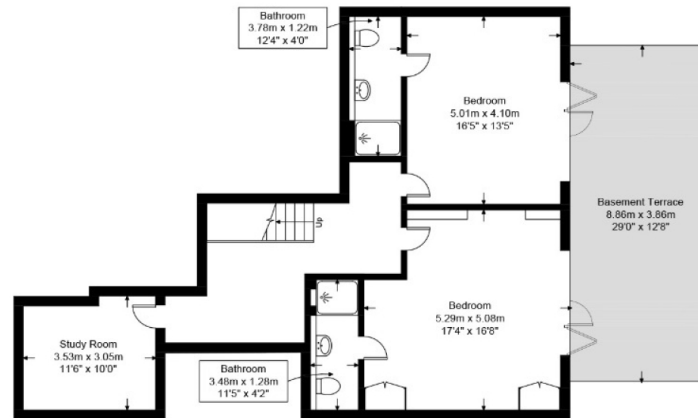


Greencroft Gardens, NW6

Approximate Gross Internal Area = 2137 sq ft / 198.5 sq m



Ground Floor



Lower Ground Floor

This plan is for layout guidance only and is not drawn to scale unless stated. All dimensions, including windows, doors, and the Total Gross Internal Area (GIA), are approximate. For precise measurements, please consult a qualified architect or surveyor before making any decisions based on this plan.



Particulars

Property

Greencroft Gardens, South Hampstead, London NW6
£2,500,000

Rooms



2



3



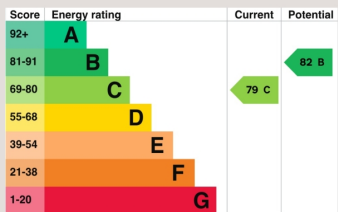
3

Features

- Large Private Garden
- Off Street Parking
- Turn Key
- Moments to Finchley Road Tube and Amenities

Information

Council Tax



Oliver Kent

oliver.kent@vitaproperties.uk
+4477 7274 0351



Scan for our website





T: +4420 7759 2199

E: enquiries@vitaproperties.uk

Disclaimer: These particulars are prepared as a general guide for prospective purchasers or tenants and do not constitute, nor constitute part of, an offer or contract. All statements, descriptions, and measurements contained herein are given in good faith and are believed to be correct at the time of printing, but any intending purchaser or tenant should not rely on them as statements or representations of fact and must satisfy themselves by inspection or otherwise as to their correctness. Floor plans and photographs are for illustrative purposes only and may not be to scale. The position and size of doors, windows, appliances, and other features are approximate. Anti-Money Laundering (AML): In line with the Money Laundering, Terrorist Financing and Transfer of Funds Regulations 2017, we are required to carry out customer due diligence checks. Buyers/tenants will be asked to provide proof of identity, address, and source of funds before a sale or rental can be agreed. Data Protection (GDPR): Personal information supplied to Vita Properties will be processed in accordance with the General Data Protection Regulation (GDPR). Your details may be retained for legitimate business purposes relating to property services. Full details of our Privacy Policy are available on request.

All rights reserved.