



College Court

COLLEGE CRESCENT, SWISS COTTAGE, LONDON NW3

£775,000



Positioned within College Court in the heart of Swiss Cottage, this bright and generously proportioned two bedroom, two bathroom apartment offers comfortable living in a well regarded North West London setting.

The apartment features high ceilings and well balanced interiors, with large sash windows that fill the rooms with natural light. The spacious reception room provides a versatile environment for both entertaining and everyday living.

There are two well sized double bedrooms, thoughtfully arranged to maximise privacy. The principal bedroom benefits from an en-suite bathroom, while a second bathroom serves the additional bedroom and guests. Both are well presented and practical in layout.

Further advantages include communal heating and hot water, offering convenience and ease of living. The property also benefits from off-street parking, a valuable feature in this part of London and access to a communal garden, providing welcome outdoor space for residents.

Situated moments from local shops, cafés, and amenities, and within easy reach of Swiss Cottage Underground Station (Jubilee Line), the apartment is well connected to the West End, the City, and beyond.



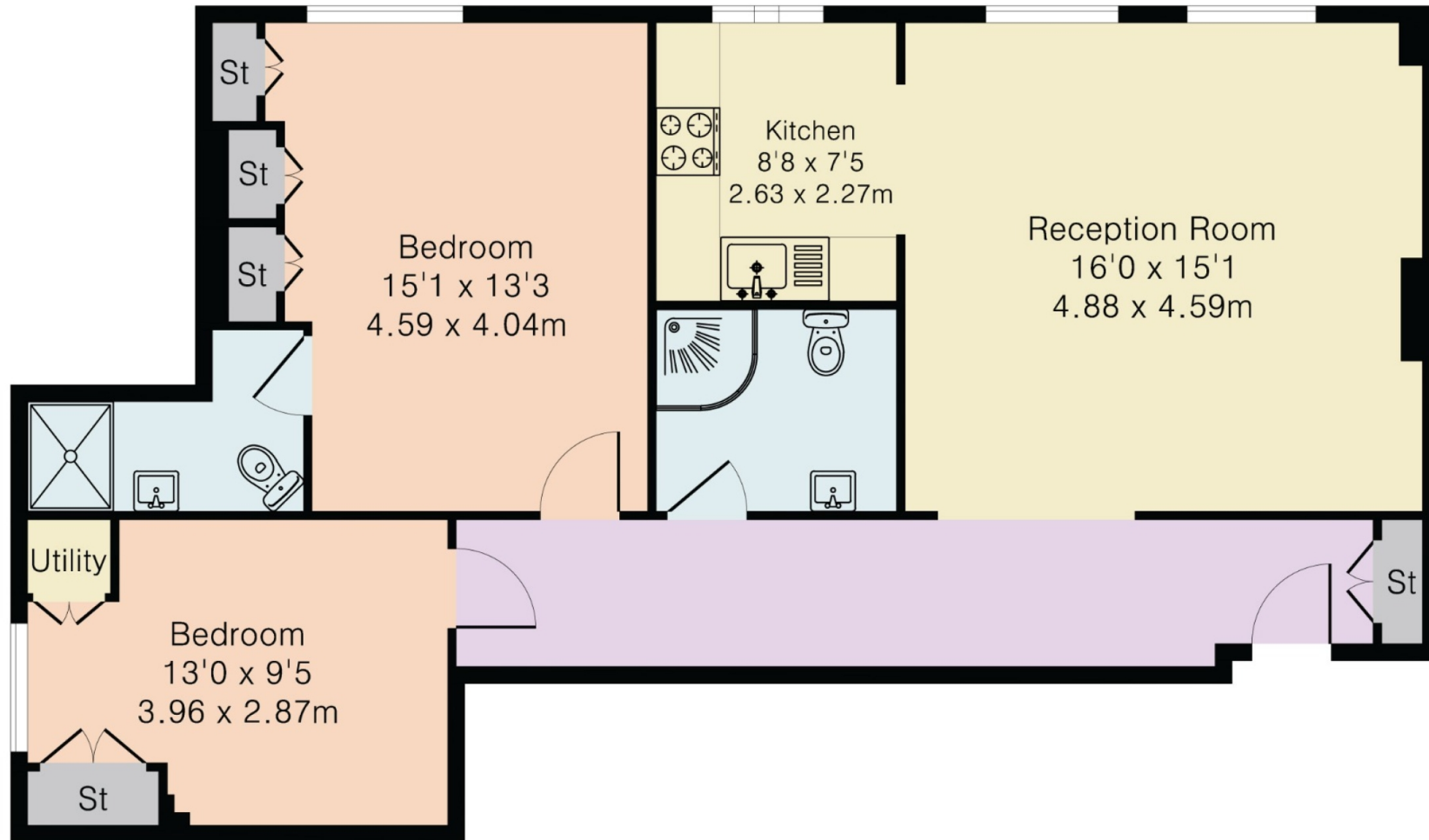








Approximate Gross Internal Area 850 sq ft - 79 sq m



First Floor

Particulars

Property

College Court, College Crescent, Swiss Cottage, London NW3
£775,000

Rooms



1



2



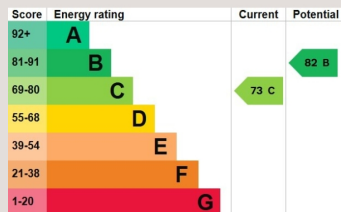
2

Features

- High Ceilings
- Communal Heating and Hot Water
- Bright and Spacious
- Sash Windows

Information

Council Tax



Jonathan Singer

jonathan.singer@vitaproperties.uk
+4478 8428 6414



Scan for our website





T: +4420 7759 2199
E: enquiries@vitaproperties.uk

Disclaimer: These particulars are prepared as a general guide for prospective purchasers or tenants and do not constitute, nor constitute part of, an offer or contract. All statements, descriptions, and measurements contained herein are given in good faith and are believed to be correct at the time of printing, but any intending purchaser or tenant should not rely on them as statements or representations of fact and must satisfy themselves by inspection or otherwise as to their correctness. Floor plans and photographs are for illustrative purposes only and may not be to scale. The position and size of doors, windows, appliances, and other features are approximate. Anti-Money Laundering (AML): In line with the Money Laundering, Terrorist Financing and Transfer of Funds Regulations 2017, we are required to carry out customer due diligence checks. Buyers/tenants will be asked to provide proof of identity, address, and source of funds before a sale or rental can be agreed. Data Protection (GDPR): Personal information supplied to Vita Properties will be processed in accordance with the General Data Protection Regulation (GDPR). Your details may be retained for legitimate business purposes relating to property services. Full details of our Privacy Policy are available on request.

All rights reserved.