



Elsworthy Terrace
PRIMROSE HILL, LONDON NW3

£1,195,500



Elegant Two-Bedroom Apartment with Balcony. Primrose Hill.

Set within a peaceful cul-de-sac moments from Primrose Hill Village and Regent's Park, this refined two-bedroom, two-bathroom apartment extends to approximately 928 sq ft and offers a rare combination of tranquillity and prime location.

The property features a bright, well-proportioned reception room with access to a private balcony overlooking landscaped gardens, ideal for both entertaining and everyday living. The principal bedroom benefits from an en-suite bathroom, while a second double bedroom is served by a stylish family bathroom.

Offered chain-free with the advantage of a share of freehold, the apartment provides long-term security and ease of ownership. Residents enjoy immediate access to the open green spaces of Primrose Hill and Regent's Park, alongside the boutiques, cafés, and restaurants of the highly sought-after Primrose Hill Village.

An excellent opportunity for professionals, couples, or as a prestigious London pied-à-terre. Viewing highly recommended.





Elegant Two-Bedroom Apartment with Balcony. Primrose Hill.

Set within a peaceful cul-de-sac moments from Primrose Hill Village and Regent's Park, this refined two-bedroom, two-bathroom apartment extends to approximately 928 sq ft and offers a rare combination of tranquillity and prime location.

The property features a bright, well-proportioned reception room with access to a private balcony overlooking landscaped gardens, ideal for both entertaining and everyday living. The principal bedroom benefits from an en-suite bathroom, while a second double bedroom is served by a stylish family bathroom.

Offered chain-free with the advantage of a share of freehold, the apartment provides long-term security and ease of ownership. Residents enjoy immediate access to the open green spaces of Primrose Hill and Regent's Park, alongside the boutiques, cafés, and restaurants of the highly sought-after Primrose Hill Village.

An excellent opportunity for professionals, couples, or as a prestigious London pied-à-terre. Viewing highly recommended.









Scan for out video walkthrough

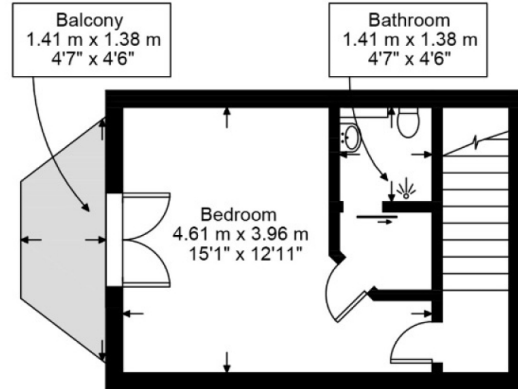
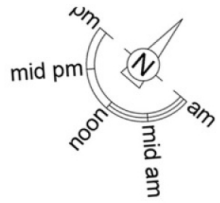


Elsworthy Terrace, NW3

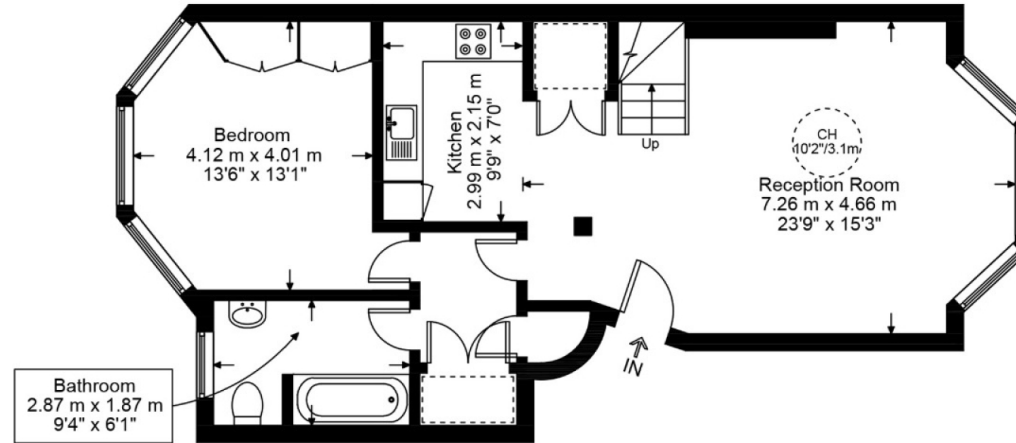
Approximate Gross Internal Area = 928 sq ft / 86.28 sq m

Restricted Height = 20.7 sq ft / 1.93 sq m

Balcony = 37 sq ft / 3.44 sq m



First Floor



Upper Ground Floor

This plan is for layout guidance only and is not drawn to scale unless stated. All dimensions, including windows, doors, and the Total Gross Internal Area (GIA), are approximate. For precise measurements, please consult a qualified architect or surveyor before making any decisions based on this plan.



Particulars

Property

Elsworthy Terrace, Primrose Hill, London NW3
£1,195,500

Rooms



1



2



2

Information

Council Tax

Features

- The property is set in a quiet cul de sac close to Primrose Hill and is near the shops, restaurants and boutiques of Primrose Hill Village as well as Regent's Park.
- Balcony overlooking gardens
- Leasehold, plus share of Freehold
- Chain Free



Jason Press

jason@vitaproperties.uk
+44 7546 694779



Scan for our website





T: +4420 7759 2199

E: enquiries@vitaproperties.uk

Disclaimer: These particulars are prepared as a general guide for prospective purchasers or tenants and do not constitute, nor constitute part of, an offer or contract. All statements, descriptions, and measurements contained herein are given in good faith and are believed to be correct at the time of printing, but any intending purchaser or tenant should not rely on them as statements or representations of fact and must satisfy themselves by inspection or otherwise as to their correctness. Floor plans and photographs are for illustrative purposes only and may not be to scale. The position and size of doors, windows, appliances, and other features are approximate. Anti-Money Laundering (AML): In line with the Money Laundering, Terrorist Financing and Transfer of Funds Regulations 2017, we are required to carry out customer due diligence checks. Buyers/tenants will be asked to provide proof of identity, address, and source of funds before a sale or rental can be agreed. Data Protection (GDPR): Personal information supplied to Vita Properties will be processed in accordance with the General Data Protection Regulation (GDPR). Your details may be retained for legitimate business purposes relating to property services. Full details of our Privacy Policy are available on request.

All rights reserved.