



Priory Road

SOUTH HAMPSTEAD, LONDON NW3

£2,000



A bright one bedroom apartment in the heart of West Hampstead, available from early February. The property offers a well designed open living space with excellent natural light and room for both dining and relaxing.

There is a generous double bedroom with built in storage and a well finished bathroom. The apartment is clean, well maintained and ready to move into.

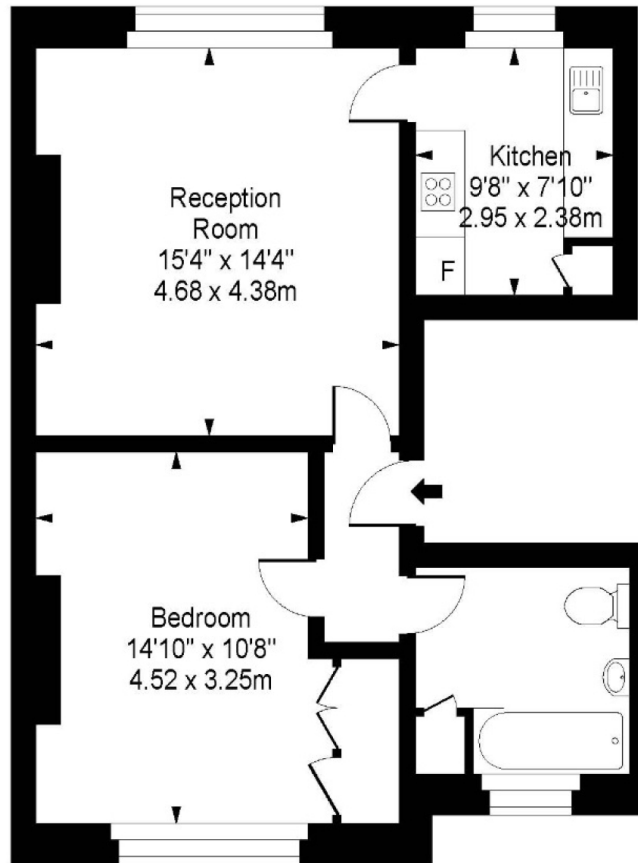
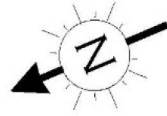
Located seconds from West Hampstead's Jubilee Line, Overground and Thameslink stations, with shops, cafés and restaurants on the doorstep, this is an ideal home for a professional or couple seeking convenience and connectivity. Early viewing recommended.







Priory Road

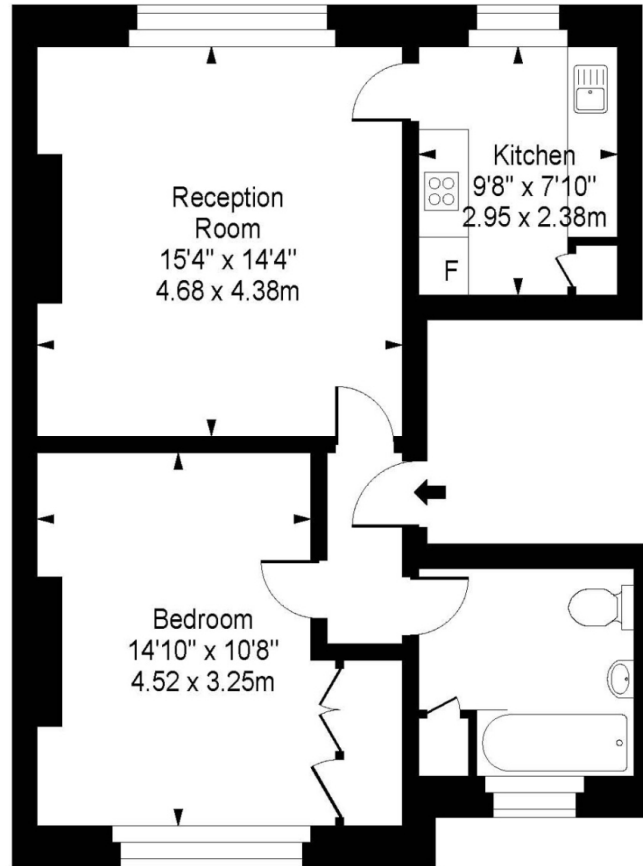
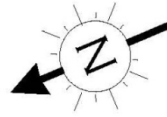


First Floor

Approx Gross Internal Area **626 Sq Ft - 58.18 Sq M**

For Illustration Purposes Only - Not To Scale
Floor plan by www.creativeplanetlk.com

Priory Road



First Floor

Approx Gross Internal Area **626 Sq Ft - 58.18 Sq M**

For Illustration Purposes Only - Not To Scale
Floor plan by www.creativeplanetik.com

Particulars

Property

Priory Road, South Hampstead, London NW3
£2,000

Rooms



1



1



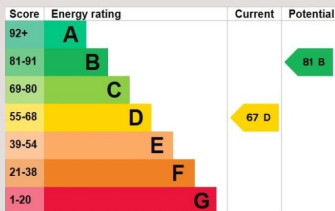
1

Features

- Bright Open Living Space
- Large Reception
- Large Double Bedroom
- Built in Storage

Information

Council Tax



Oliver Kent

oliver.kent@vitaproperties.uk
+4477 7274 0351



Scan for our website





T: +4420 7759 2199
E: enquiries@vitaproperties.uk

Disclaimer: These particulars are prepared as a general guide for prospective purchasers or tenants and do not constitute, nor constitute part of, an offer or contract. All statements, descriptions, and measurements contained herein are given in good faith and are believed to be correct at the time of printing, but any intending purchaser or tenant should not rely on them as statements or representations of fact and must satisfy themselves by inspection or otherwise as to their correctness. Floor plans and photographs are for illustrative purposes only and may not be to scale. The position and size of doors, windows, appliances, and other features are approximate. Anti-Money Laundering (AML): In line with the Money Laundering, Terrorist Financing and Transfer of Funds Regulations 2017, we are required to carry out customer due diligence checks. Buyers/tenants will be asked to provide proof of identity, address, and source of funds before a sale or rental can be agreed. Data Protection (GDPR): Personal information supplied to Vita Properties will be processed in accordance with the General Data Protection Regulation (GDPR). Your details may be retained for legitimate business purposes relating to property services. Full details of our Privacy Policy are available on request.

All rights reserved.