



Chesterton Road
NOTTING HILL, LONDON W10

£600,000



Kate Brookfield x Vita Collaborations

An elegant, newly renovated first floor apartment situated just moments from the iconic Golborne Road and Portobello Road in Notting Hill, W10.

The home features a wonderful open plan living space with beautifully high ceilings and two large sash windows that flood the room with natural light. Off the main living area is a striking shower room, complete with an ornate marble washbasin and brushed brass fittings. The bedroom is arranged over a split level at the rear of the property and includes an exceptionally versatile space that can serve as a home office or dressing room.

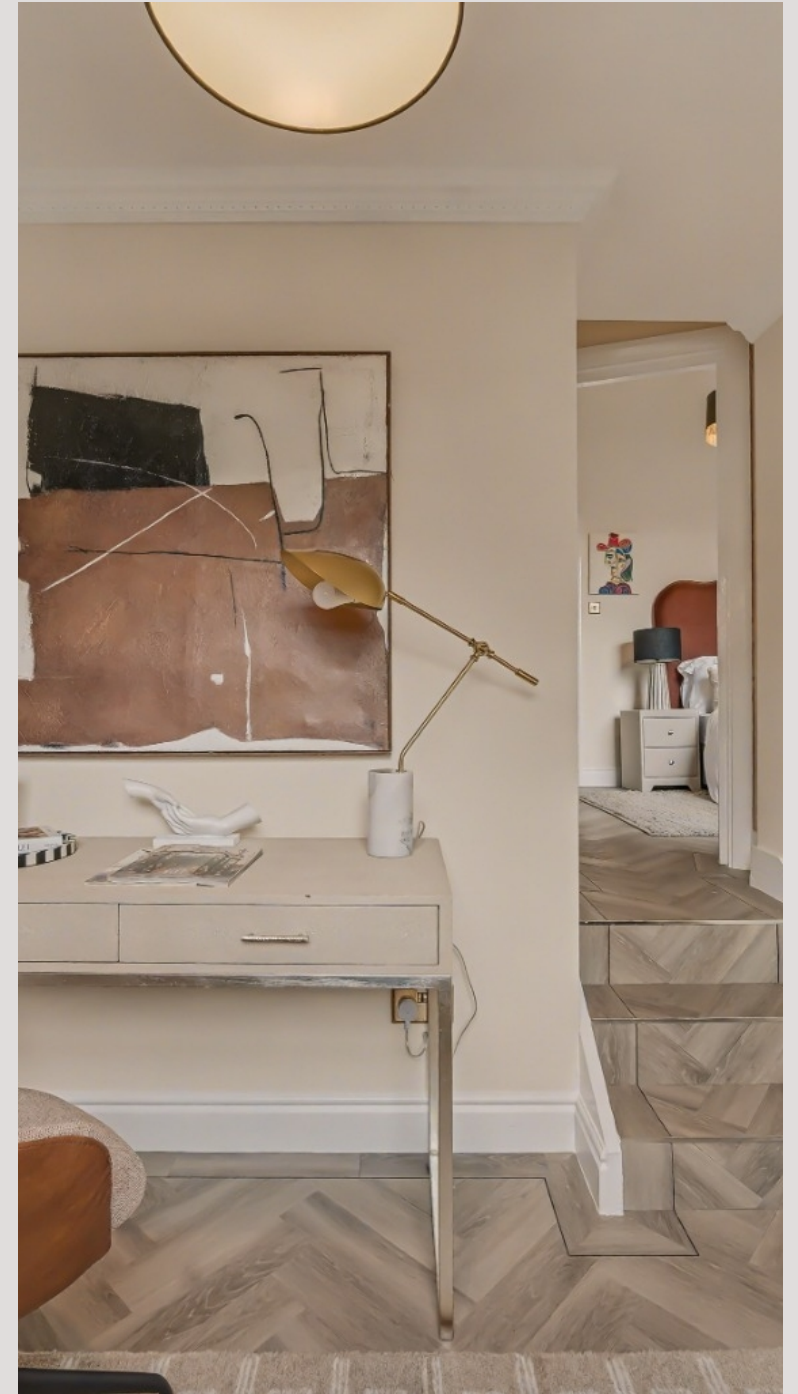
Chesterton Road lies between Ladbroke Grove and the junction of Golborne Road and Portobello Road, placing the apartment in an enviable Notting Hill location. The street is lined with classic stucco-fronted villas, and the area is surrounded by some of London's most fashionable restaurants and boutique shopping.





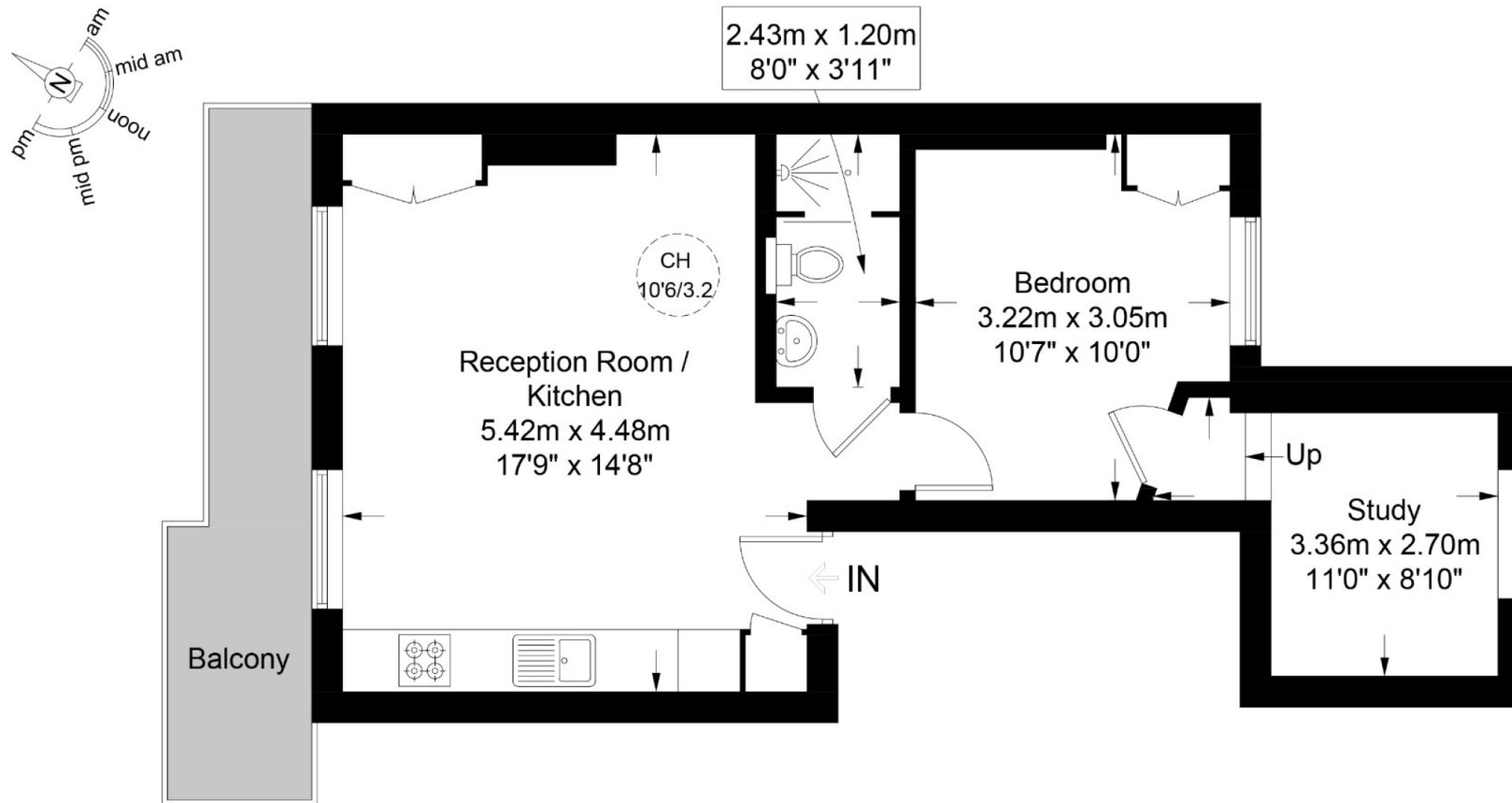






Chesterton Road, W10

Approximate Gross Internal Area = 488 sq ft / 45.3 sq m



Second Floor

This plan is for layout guidance only and is not drawn to scale unless stated. All dimensions, including windows, doors, and the Total Gross Internal Area (GIA), are approximate. For precise measurements, please consult a qualified architect or surveyor before making any decisions based on this plan.



Particulars

Property

Chesterton Road, Notting Hill, London W10
£600,000

Rooms



2



1



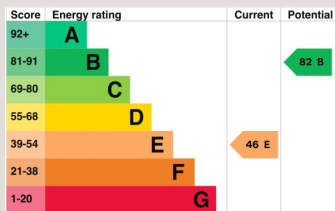
1

Features

- Moments to Golborne Road and Portobello Road
- Newly renovated
- Bedroom with additional office room
- Open plan kitchen

Information

Council Tax



Kate Brookfield

Kate.brookfield@vitaproperties.uk
+4478 1365 5431



Scan for our website





T: +4420 7759 2199

E: enquiries@vitaproperties.uk

Disclaimer: These particulars are prepared as a general guide for prospective purchasers or tenants and do not constitute, nor constitute part of, an offer or contract. All statements, descriptions, and measurements contained herein are given in good faith and are believed to be correct at the time of printing, but any intending purchaser or tenant should not rely on them as statements or representations of fact and must satisfy themselves by inspection or otherwise as to their correctness. Floor plans and photographs are for illustrative purposes only and may not be to scale. The position and size of doors, windows, appliances, and other features are approximate. Anti-Money Laundering (AML): In line with the Money Laundering, Terrorist Financing and Transfer of Funds Regulations 2017, we are required to carry out customer due diligence checks. Buyers/tenants will be asked to provide proof of identity, address, and source of funds before a sale or rental can be agreed. Data Protection (GDPR): Personal information supplied to Vita Properties will be processed in accordance with the General Data Protection Regulation (GDPR). Your details may be retained for legitimate business purposes relating to property services. Full details of our Privacy Policy are available on request.

All rights reserved.