



Buchanan Gardens  
KENSAL RISE, LONDON, NW10

£1,825,000



## Kate Brookfield x Vita Collaborations

An extremely handsome Edwardian house, situated on Buchanan Gardens in Kensal Rise, NW10.

This impressive six bedroom home is brimming with original character and stands as one of the wider houses on the road, offering views directly onto the Elmwood Lawn Tennis Club.

From the road, its striking façade has been beautifully maintained, with a manicured front garden and hedgerow providing extra privacy. The original tiles line the ground-floor hallway, where period cornicing and detailing are immediately on show. Two generous living spaces sit to the front of the home, both with high ceilings and charming period fireplaces. The ground-floor guest bathroom is a full suite, including a bathtub, and the utility space is separate, with a full pantry located ahead of the kitchen. The kitchen/dining room opens onto the south-facing garden and offers comfort and charm, featuring a shaker-style kitchen and original wooden floors.

French doors lead out to the garden, where there is first a sun deck, with a mature grapevine draping over an archway to the side-return area, followed by a perfectly sized garden with shrubs and trees providing much-needed shade.





On the first floor are four bedrooms and a full family bathroom. The second floor offers two further bedrooms and an ensuite bathroom. Offering 2,264 sq ft, with the opportunity to extend the footprint further on the ground floor (STPP), this very special home has been loved by the current owners for many years and is a rare gem in the neighbourhood.





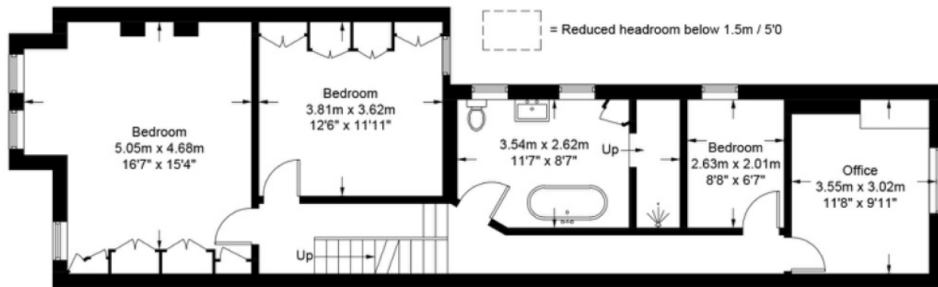
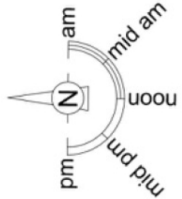




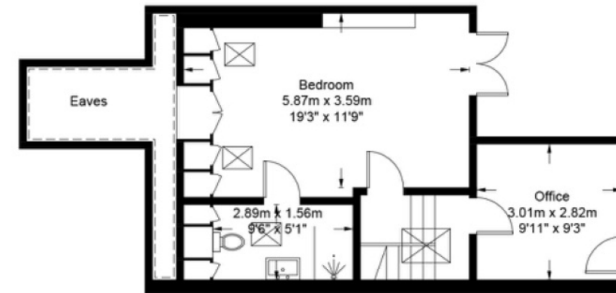
# Buchanan Gardens, NW10

Approximate Gross Internal Area = 2264 sq ft / 210.3 sq m

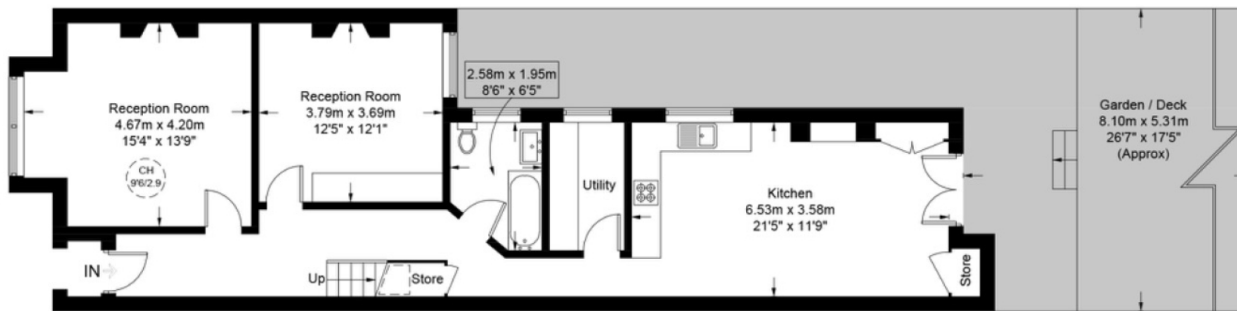
Restricted Height = 77 sq ft / 7.2 sq m



First Floor



Second Floor



Ground Floor

This plan is for layout guidance only and is not drawn to scale unless stated. All dimensions, including windows, doors, and the Total Gross Internal Area (GIA), are approximate. For precise measurements, please consult a qualified architect or surveyor before making any decisions based on this plan.



# Particulars

## Property

Buchanan Gardens, Kensal Rise, London, NW10  
£1,825,000

## Rooms



2



3



6

## Information

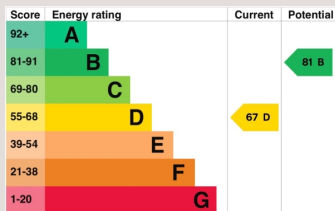
Council Tax

## Features

- Six bedroom mid terrace Edwardian house
- Prime Kensal Rise location, opposite the Elmwood Lawn tennis club
- Catchment for desirable primary schools, walking distance to nurseries
- Moments to all local amenities on College Road and Chamberlayne Road

Kate Brookfield

Kate.brookfield@vitaproperties.uk  
+4478 1365 5431



Scan for our website





T: +4420 7759 2199

E: [enquiries@vitaproperties.uk](mailto:enquiries@vitaproperties.uk)

Disclaimer: These particulars are prepared as a general guide for prospective purchasers or tenants and do not constitute, nor constitute part of, an offer or contract. All statements, descriptions, and measurements contained herein are given in good faith and are believed to be correct at the time of printing, but any intending purchaser or tenant should not rely on them as statements or representations of fact and must satisfy themselves by inspection or otherwise as to their correctness. Floor plans and photographs are for illustrative purposes only and may not be to scale. The position and size of doors, windows, appliances, and other features are approximate. Anti-Money Laundering (AML): In line with the Money Laundering, Terrorist Financing and Transfer of Funds Regulations 2017, we are required to carry out customer due diligence checks. Buyers/tenants will be asked to provide proof of identity, address, and source of funds before a sale or rental can be agreed. Data Protection (GDPR): Personal information supplied to Vita Properties will be processed in accordance with the General Data Protection Regulation (GDPR). Your details may be retained for legitimate business purposes relating to property services. Full details of our Privacy Policy are available on request.

All rights reserved.