



Westfield

15 KIDDERPORE AVENUE, HAMPSTEAD, LONDON NW3

£7,500



Nestled within the vibrant and highly sought-after Westfield area of London, this remarkable three or four-bedroom apartment presents an unparalleled opportunity for sophisticated urban living. Available to let from the 1st of December, this residence combines expansive living spaces with an array of exclusive amenities, making it an ideal choice for discerning professionals or families seeking comfort, convenience, and luxury.

Upon entering this impressive third-floor apartment, accessible via a swift and modern lift, residents are immediately greeted by a sense of space and refined elegance. The flexible layout offers the choice of either three generously proportioned bedrooms, allowing for an additional reception room or study, or a full four-bedroom configuration, catering to diverse lifestyle needs. Each bedroom is designed to provide a tranquil retreat, boasting ample natural light and thoughtful finishes.





The property benefits from two well-appointed bathrooms, meticulously designed with contemporary fixtures and fittings, ensuring both style and functionality. The main reception room serves as the heart of the home, offering a spacious and inviting environment perfect for relaxation and entertaining. Its generous dimensions allow for versatile furniture arrangements, creating distinct zones for dining and lounging. A standout feature of this apartment is the large private terrace, providing an invaluable outdoor space for al fresco dining, morning coffees, or simply unwinding whilst enjoying the urban landscape.



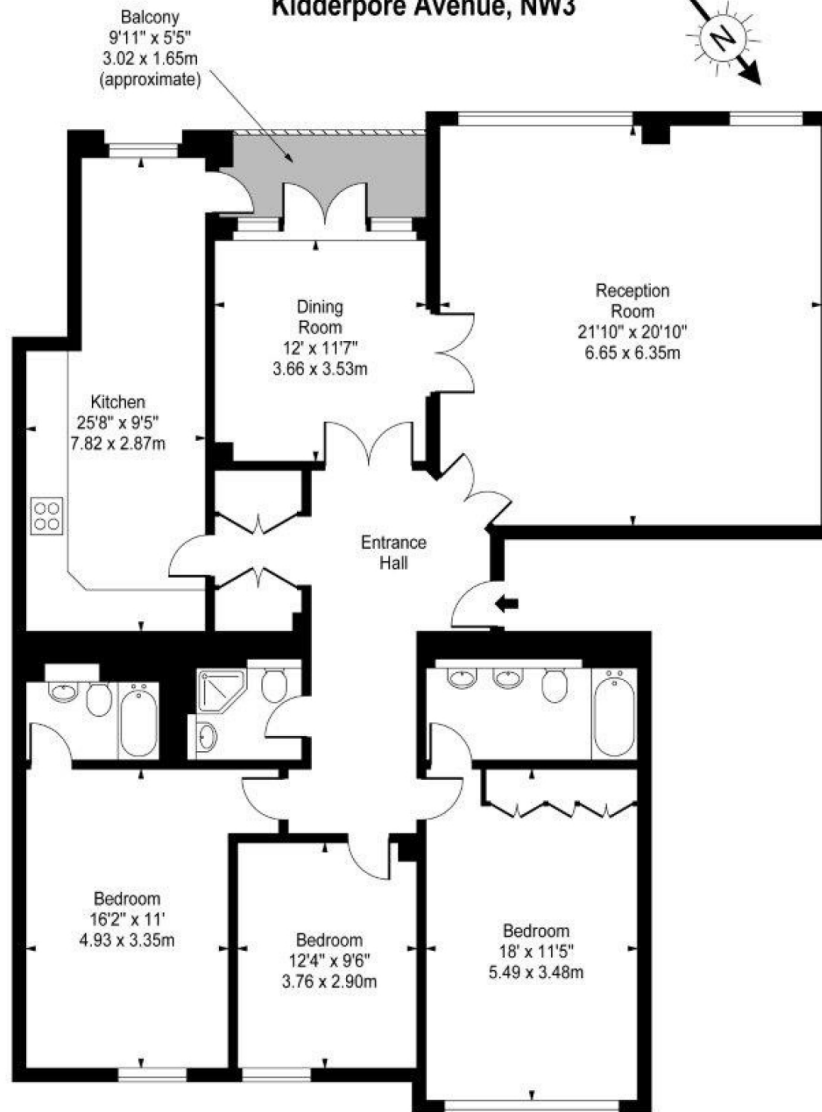
Beyond the confines of the apartment, residents gain access to an impressive suite of communal facilities. A state-of-the-art gymnasium allows for convenient workouts, while the inviting swimming pool offers a perfect escape for leisure and rejuvenation. These amenities underscore the property's commitment to a lifestyle of comfort and well-being.







Westfield,  
Kidderpore Avenue, NW3



Third Floor

Approx Gross Internal Area **1760 Sq Ft - 163.50 Sq M**

For Illustration Purposes Only - Not To Scale  
[www.goldlens.co.uk](http://www.goldlens.co.uk)

Ref. No. 008208N

# Particulars

## Property

Westfield, 15 Kidderpore Avenue, Hampstead, London NW3  
£7,500

## Rooms



1



2



4

## Features

- Three OR Four Bedrooms
- Gym & Swimming Pool
- Available 1st Dec
- Secure Underground Parking

## Information

Council Tax

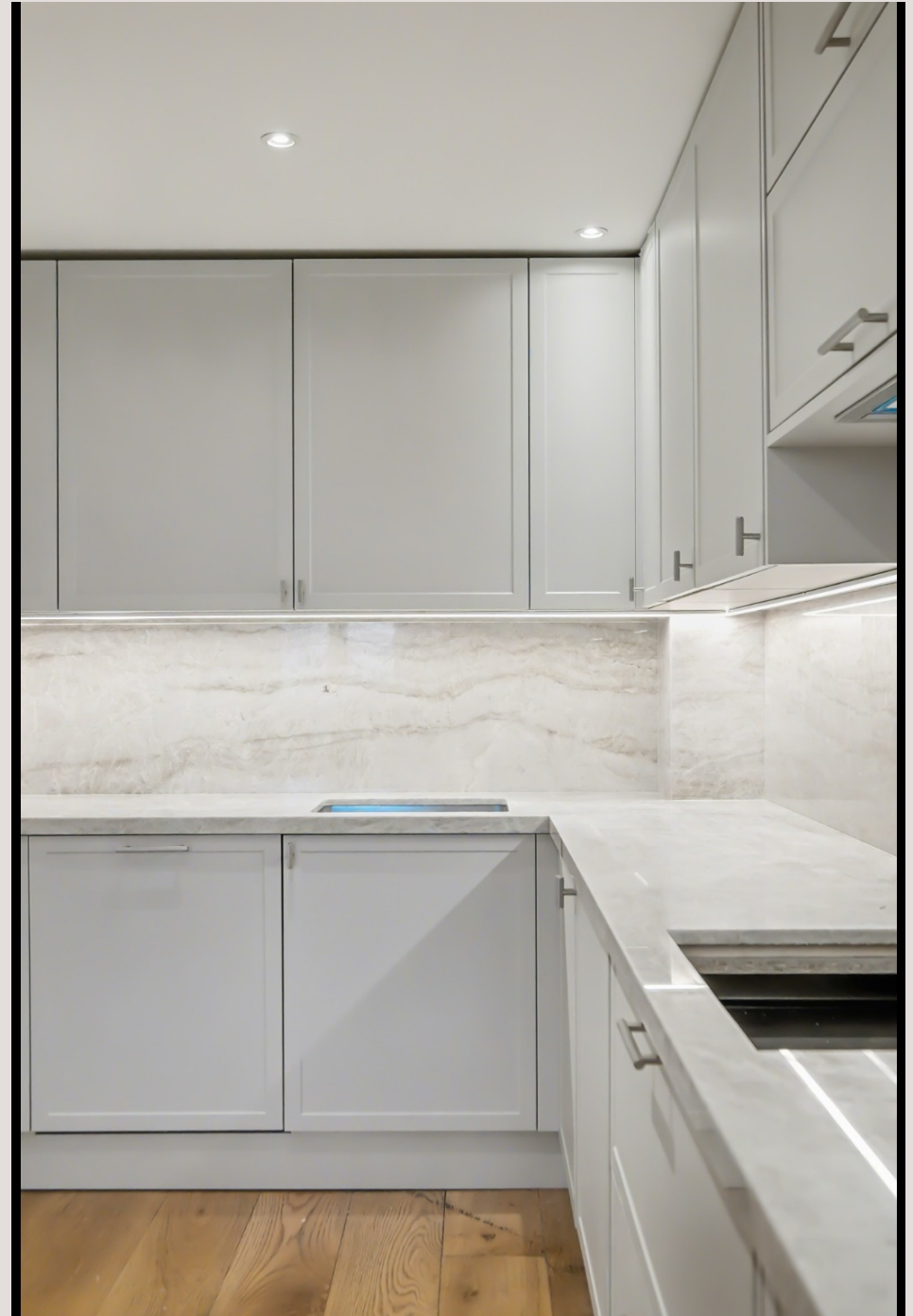


Oliver Kent

[oliver.kent@vitaproperties.uk](mailto:oliver.kent@vitaproperties.uk)  
+4477 7274 0351



Scan for our website





T: +4420 7759 2199  
E: [enquiries@vitaproperties.uk](mailto:enquiries@vitaproperties.uk)

Disclaimer: These particulars are prepared as a general guide for prospective purchasers or tenants and do not constitute, nor constitute part of, an offer or contract. All statements, descriptions, and measurements contained herein are given in good faith and are believed to be correct at the time of printing, but any intending purchaser or tenant should not rely on them as statements or representations of fact and must satisfy themselves by inspection or otherwise as to their correctness. Floor plans and photographs are for illustrative purposes only and may not be to scale. The position and size of doors, windows, appliances, and other features are approximate. Anti-Money Laundering (AML): In line with the Money Laundering, Terrorist Financing and Transfer of Funds Regulations 2017, we are required to carry out customer due diligence checks. Buyers/tenants will be asked to provide proof of identity, address, and source of funds before a sale or rental can be agreed. Data Protection (GDPR): Personal information supplied to Vita Properties will be processed in accordance with the General Data Protection Regulation (GDPR). Your details may be retained for legitimate business purposes relating to property services. Full details of our Privacy Policy are available on request.

All rights reserved.