



Buckland Crescent
BELSIZE PARK, LONDON NW3

£1,250,000

First Viewings - 17th & 18th November- Limited Slots.

Nestled within the highly sought-after Buckland Crescent, this exquisite three-bedroom garden apartment presents a rare opportunity to acquire a residence of significant charm and generous proportions in one of London's most desirable postcodes. Offered for sale, this property seamlessly blends period elegance with contemporary living, making it an ideal home for discerning buyers.





Upon entering, one is immediately struck by the impressive sense of space and light that permeates throughout. The grand reception room serves as the heart of this magnificent home, providing an expansive and versatile area perfect for both sophisticated entertaining and comfortable family living. The room's generous dimensions are further enhanced by the remarkable over 3-metre high ceilings, a feature that not only amplifies the feeling of grandeur but also allows natural light to flood the space, creating an airy and inviting atmosphere. This impressive ceiling height is a hallmark of classic London architecture and adds an undeniable sense of prestige to the apartment.





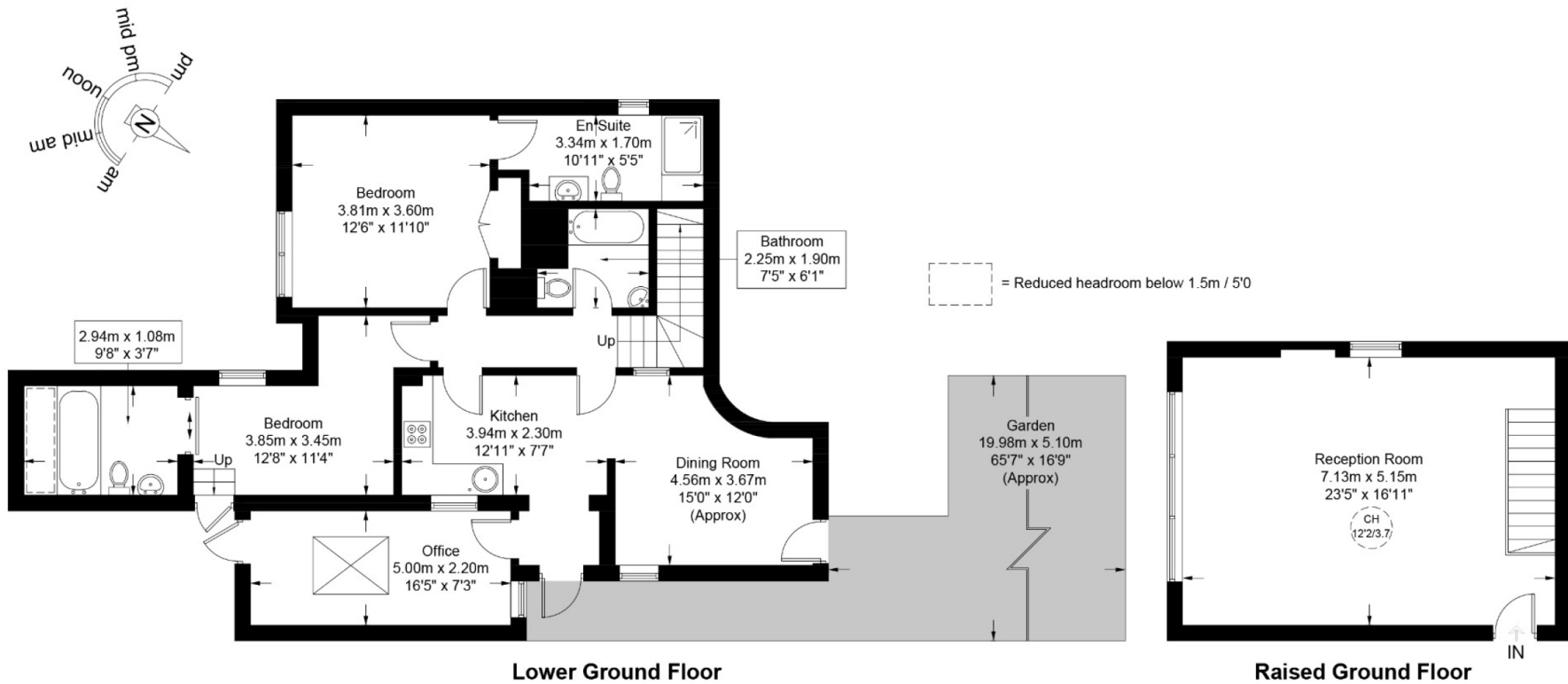




Buckland Crescent, NW3

Approximate Gross Internal Area = 1381 sq ft / 128.3 sq m

Restricted Height = 14 sq ft / 1.3 sq m



This plan is for layout guidance only and is not drawn to scale unless stated. All dimensions, including windows, doors, and the Total Gross Internal Area (GIA), are approximate. For precise measurements, please consult a qualified architect or surveyor before making any decisions based on this plan.



Particulars

Property

Buckland Crescent, Belsize Park, London NW3
£1,250,000

Rooms



1



3



3

Features

- Stunning 3 Bedroom Garden Apartment
- Grand Reception Room
- Over 3m High Ceilings
- Close to Swiss Cottage Station (Jubilee line)

Information

Council Tax



Oliver Kent

oliver.kent@vitaproperties.uk
+4477 7274 0351



Scan for our website





T: +4420 7759 2199

E: enquiries@vitaproperties.uk

Disclaimer: These particulars are prepared as a general guide for prospective purchasers or tenants and do not constitute, nor constitute part of, an offer or contract. All statements, descriptions, and measurements contained herein are given in good faith and are believed to be correct at the time of printing, but any intending purchaser or tenant should not rely on them as statements or representations of fact and must satisfy themselves by inspection or otherwise as to their correctness. Floor plans and photographs are for illustrative purposes only and may not be to scale. The position and size of doors, windows, appliances, and other features are approximate. Anti-Money Laundering (AML): In line with the Money Laundering, Terrorist Financing and Transfer of Funds Regulations 2017, we are required to carry out customer due diligence checks. Buyers/tenants will be asked to provide proof of identity, address, and source of funds before a sale or rental can be agreed. Data Protection (GDPR): Personal information supplied to Vita Properties will be processed in accordance with the General Data Protection Regulation (GDPR). Your details may be retained for legitimate business purposes relating to property services. Full details of our Privacy Policy are available on request.

All rights reserved.