



Meard Street
SOHO, LONDON W1

£9,533



Exquisite Grade II* Listed Townhouse in Soho: A Trendy London Gem to Let

Positioned in the vibrant core of Soho, this exceptional five-bedroom Grade II* listed townhouse offers a rare opportunity to rent a home of remarkable character and style in one of London's most fashionable districts. Rich in architectural heritage yet curated with a distinctly contemporary edge, the property delivers an inspired blend of historic grandeur and modern sophistication.

From the moment you enter, the seamless balance of period detailing and cutting-edge design is immediately apparent. High ceilings, elegant proportions, and carefully preserved original features sit comfortably alongside bespoke finishes and a bold, design-led aesthetic. The house offers two generous reception rooms, ideal for both impressive entertaining and relaxed everyday living. Bathed in natural light, these versatile spaces can function as refined drawing rooms, media lounges, or creative studios, adapting effortlessly to modern lifestyles.





The accommodation comprises five beautifully appointed bedrooms, each thoughtfully designed as a calm and stylish retreat from the energy of the surrounding city. Four contemporary bathrooms, finished with premium fittings and sleek detailing, ensure comfort and practicality for residents and guests alike.

A particularly coveted feature is the private patio – an urban sanctuary rarely found in such a central location. Perfect for al fresco dining or quiet morning coffee, it provides a peaceful counterpoint to Soho's lively atmosphere.

As a Grade II* listed building, the townhouse holds special architectural significance, preserving its historic integrity while offering every modern convenience. Living in Soho places world-class theatres, acclaimed restaurants, boutiques, and cultural landmarks moments away, with excellent transport connections across London.



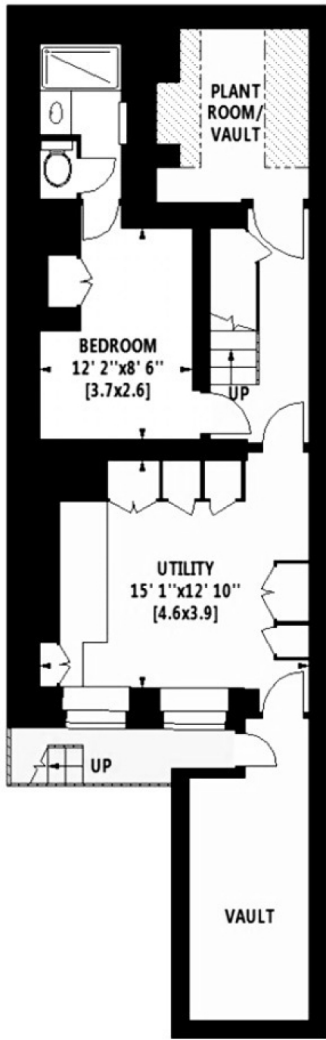




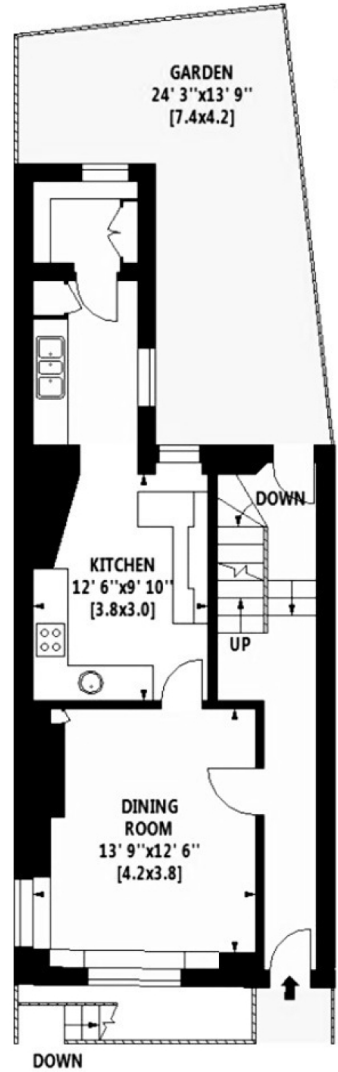


Scan for out video walkthrough






LOWER GROUND FLOOR

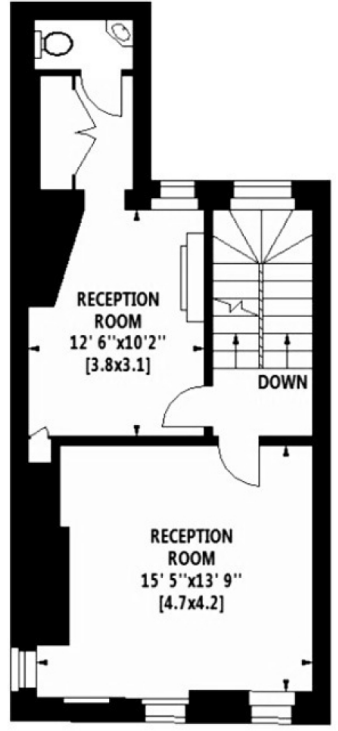


GROUND FLOOR

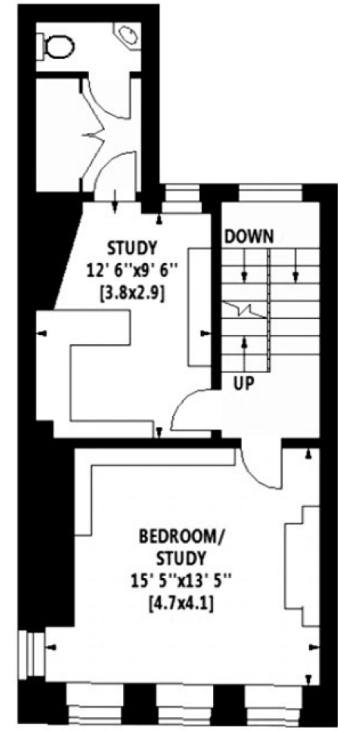
Gross Internal Area: 223.5 Sq. metres
(Including Vaults) 2406 Sq. feet

Gross Internal Area: 214 Sq. metres
(Excluding Vaults) 2303 Sq. feet

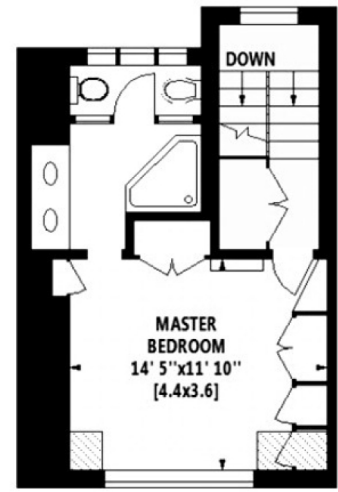
 Under 1.5m head height



FIRST FLOOR



SECOND FLOOR



THIRD FLOOR



Particulars

Property

Meard Street, Soho, London W1
£9,533

Rooms



2



4



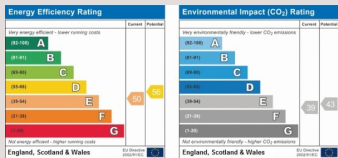
5

Features

- Located in the heart of Soho
- Private Patio
- Trendy Throughout
- Grade II* listed townhouse

Information

Council Tax



Oliver Kent

oliver.kent@vitaproperties.uk
+4477 7274 0351



Scan for our website





T: +4420 7759 2199

E: enquiries@vitaproperties.uk

Disclaimer: These particulars are prepared as a general guide for prospective purchasers or tenants and do not constitute, nor constitute part of, an offer or contract. All statements, descriptions, and measurements contained herein are given in good faith and are believed to be correct at the time of printing, but any intending purchaser or tenant should not rely on them as statements or representations of fact and must satisfy themselves by inspection or otherwise as to their correctness. Floor plans and photographs are for illustrative purposes only and may not be to scale. The position and size of doors, windows, appliances, and other features are approximate. Anti-Money Laundering (AML): In line with the Money Laundering, Terrorist Financing and Transfer of Funds Regulations 2017, we are required to carry out customer due diligence checks. Buyers/tenants will be asked to provide proof of identity, address, and source of funds before a sale or rental can be agreed. Data Protection (GDPR): Personal information supplied to Vita Properties will be processed in accordance with the General Data Protection Regulation (GDPR). Your details may be retained for legitimate business purposes relating to property services. Full details of our Privacy Policy are available on request.

All rights reserved.