



Makers Building

1 JASPER WALK, SHOREDITCH, LONDON N1

£2,850,000



The Penthouse stands as the development's most exceptional residence, offering over 2,300 sq ft of thoughtfully designed living space. It features three spacious bedrooms, two elegant bathrooms, a guest W/C, a utility room, and ample storage throughout. Expansive floor-to-ceiling windows bathe the interiors in natural light, enhancing the sense of openness. A beautifully landscaped west-facing roof garden provides sweeping views, creating an ideal setting for both entertaining and peaceful relaxation. Modern living is elevated with a Crestron home automation system, integrated ceiling speakers in the living area and principal bedroom, and electric blinds for effortless comfort and control.

Every detail has been meticulously selected to deliver both style and quality. The kitchen is finished with herringbone flooring, quartz worktops, and premium Miele appliances. Bathrooms evoke a spa-like atmosphere, featuring honed Italian marble, porcelain mosaic tiling, sleek black brassware, heated towel rails, and bespoke vanity units. Bedrooms are finished with soft broadloom carpets and fitted with custom Italian wardrobes by Lema, complete with smoked oak veneer and refined brass accents.





Residents benefit from an array of amenities comparable to a luxury hotel. A dramatic double-height lobby designed by Woods Bagot welcomes you with terrazzo flooring, smoked oak detailing, and bespoke furnishings. Services include a 24-hour concierge, secure mail handling, and extensive cycle storage. Exclusive resident spaces include a stylish lounge, private cinema, fully equipped gym with treatment room, and two landscaped roof gardens. Additional highlights include a tranquil Garden Room and an elegant Library Lounge.

Perfectly positioned, the penthouse offers immediate access to transport links and the vibrant culture of Shoreditch and the City, blending convenience with a dynamic urban lifestyle.



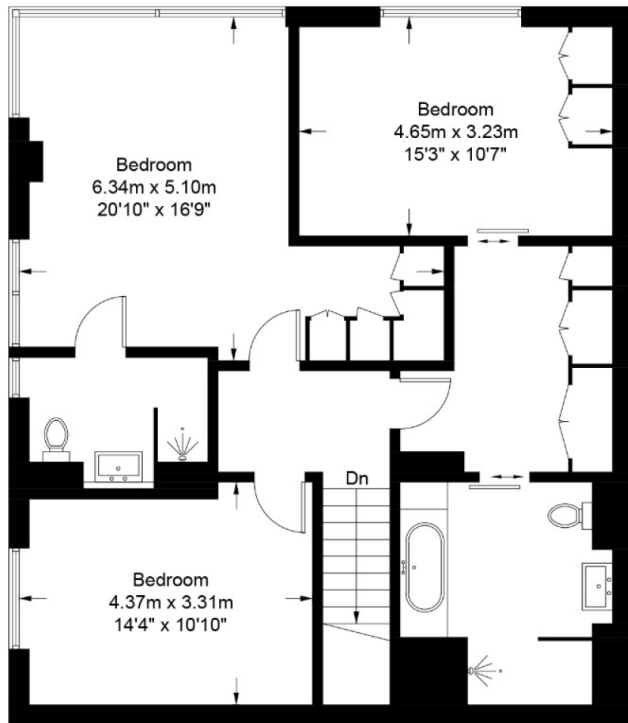




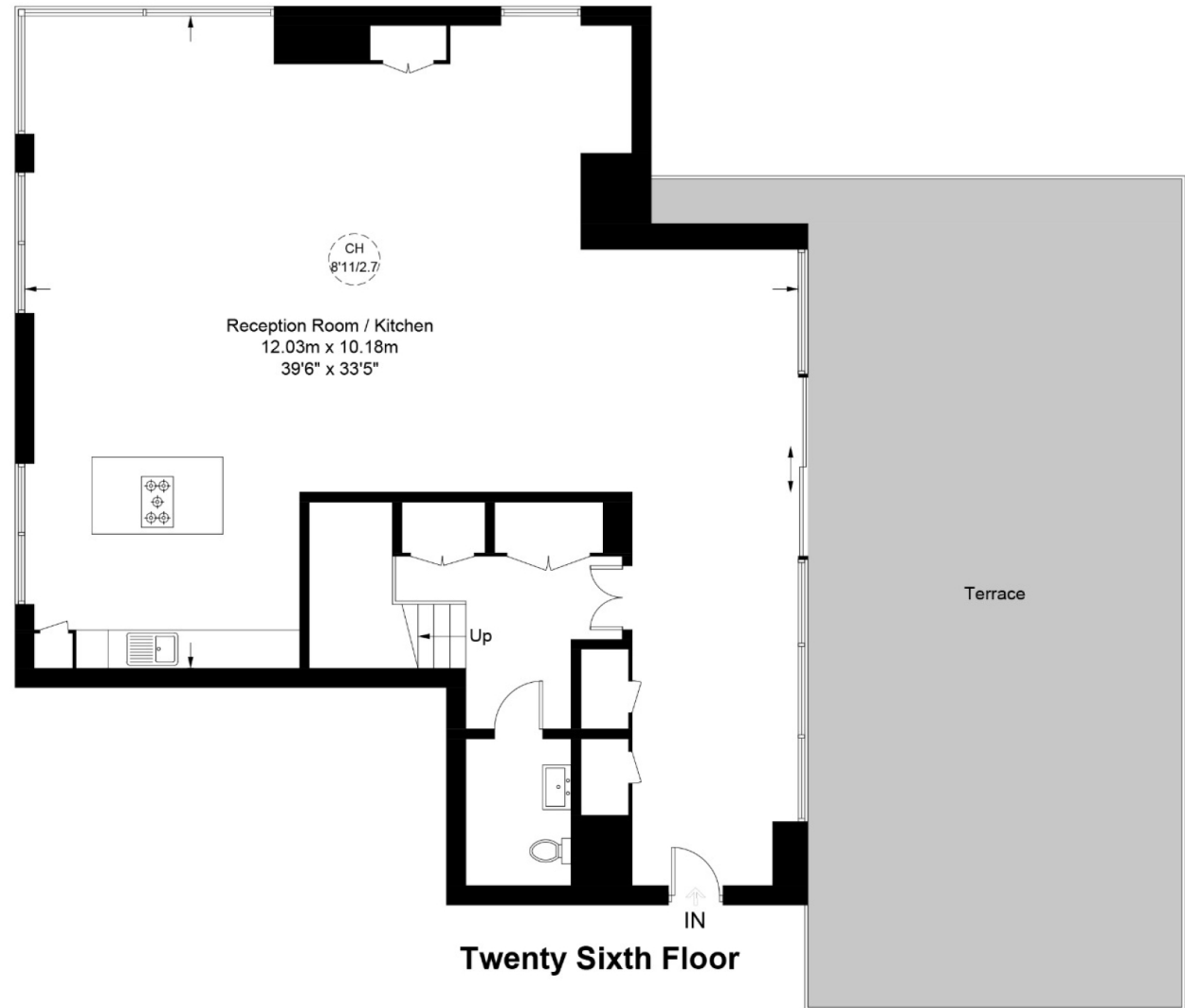


Makers Building, N1

Approximate Gross Internal Area = 2354 sq ft / 218.7 sq m



Twenty Fifth Floor



Twenty Sixth Floor



**Certified
Property
Measurer**

This plan is for layout guidance only. Not drawn to scale unless stated. Windows and door openings are approximate. Whilst every care is taken in the preparation of this plan, please check all dimensions, shapes and compass bearings before making any decisions reliant upon them. (ID995354)

Particulars

Property

Makers Building, 1 Jasper Walk, Shoreditch, London N1
£2,850,000

Rooms



2



2



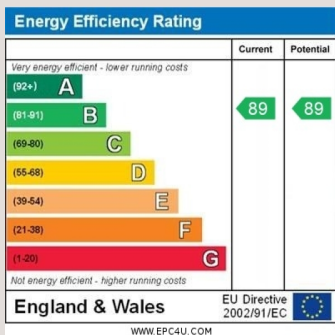
3

Features

- Gym, Treatment room & Cinema
- Library lounge and garden lounge
- 7 year NHBC warranty
- Amazing views

Information

Council Tax



Nouri Alexander

nouri.alexander@vitaproperties.uk
+4475 8405 1289



Scan for our website





T: +4420 7759 2199
E: enquiries@vitaproperties.uk

Disclaimer: These particulars are prepared as a general guide for prospective purchasers or tenants and do not constitute, nor constitute part of, an offer or contract. All statements, descriptions, and measurements contained herein are given in good faith and are believed to be correct at the time of printing, but any intending purchaser or tenant should not rely on them as statements or representations of fact and must satisfy themselves by inspection or otherwise as to their correctness. Floor plans and photographs are for illustrative purposes only and may not be to scale. The position and size of doors, windows, appliances, and other features are approximate. Anti-Money Laundering (AML): In line with the Money Laundering, Terrorist Financing and Transfer of Funds Regulations 2017, we are required to carry out customer due diligence checks. Buyers/tenants will be asked to provide proof of identity, address, and source of funds before a sale or rental can be agreed. Data Protection (GDPR): Personal information supplied to Vita Properties will be processed in accordance with the General Data Protection Regulation (GDPR). Your details may be retained for legitimate business purposes relating to property services. Full details of our Privacy Policy are available on request.

All rights reserved.