



Harlesden Gardens  
HARLESDEN, LONDON, NW10

£1,150,000



Kate Brookfield x Vita Collaborations proudly present this beautifully designed family home on Harlesden Gardens, NW10.

Lovingly renovated by the current owners, this home offers bright spacious and stylish accommodation arranged over three floors and the added benefits of a wonderful garden studio.

Spanning 1834 sq ft, this home is presented in immaculate condition both inside and out. The ground floor comprises a superb dual aspect double reception room with reinstated period details and a glorious rear extension featuring a bespoke Uncommon Projects kitchen with Siemens and Miele appliances, cork flooring with underfloor heating and a stunning sitting space with feature window framing the rear garden.

The garden is low maintenance with a blend of reclaimed brick slips and artificial grass, with a home studio with full bi-folding doors, perfect as an extra office space, play room or home gym. The view from the garden to the back of the house showcases the cedar cladding finish of both the ground floor and loft extensions.





Completing the first floor, cleverly hidden storage areas including a full utility cupboard and guest cloakroom.

The first floor offers three generous bedrooms and a large family bathroom. High ceilings and pristine original wooden floors run throughout and there is an abundance of fitted storage. The top floor of the house features a further double bedroom with full width window, ensuite bathroom and further fitted storage.



This handsome mid terrace Edwardian house is situated within increasingly popular enclave of roads in Harlesden, served by the shops and amenities on Park Parade and favoured by those wishing to use Maple Walk prep school and John Keble C of E primary school, whilst remaining close and connected to Kensal Rise, Notting Hill and west London.

Offered chain free.







# Harlesden Gardens, NW10 4HB

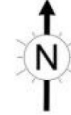
Approx Gross Internal Area = 146.53 sq m / 1577 sq ft

Shed = 6.38 sq m / 68 sq ft

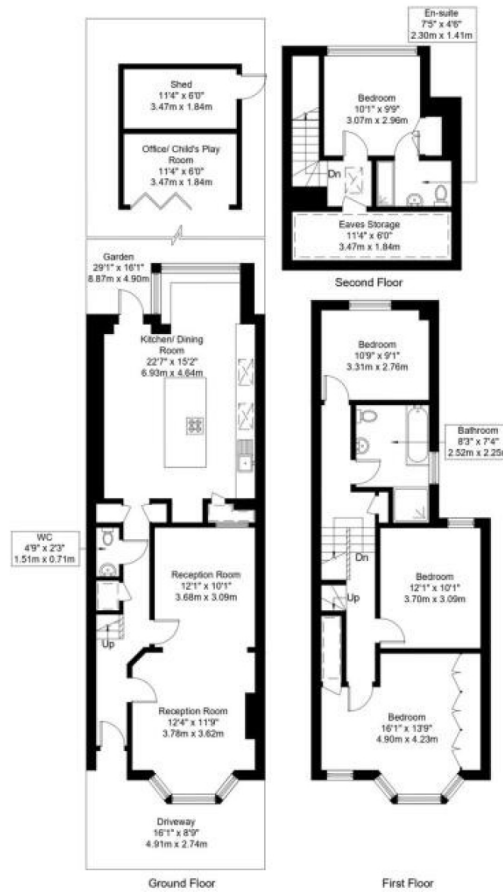
Office/ Child's Play Room = 7.56 sq m / 81 sq ft

Eaves Storage/RHH = 9.98 sq m / 107 sq ft

Total = 170.45 sq m / 1834 sq ft



= Reduced headroom below 1.5m / 5'0



Ref :

Copyright **BLEU PLAN**

The Floor plan is not to scale and measurements and areas shown are approximate and therefore should be used for illustrative purposes only. The plan has been prepared in accordance with the RICS code of Measuring Practice and whilst we have confidence in the information produced it must not be relied on. Maximum lengths and widths are represented on the floor plan. If there is any aspect of particular importance, you should carry out or commission your own inspection of the property.

Copyright © BleuPlan

# Particulars

## Property

Harlesden Gardens, Harlesden, London, NW10  
£1,150,000

## Rooms



2



3



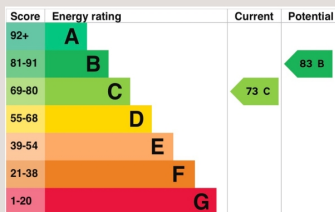
4

## Features

- Superb mid terrace family house
- Bespoke Uncommon Projects kitchen
- Fully extended and renovated
- Large garden studio

## Information

Council Tax



Kate Brookfield

Kate.brookfield@vitaproperties.uk  
+4478 1365 5431



Scan for our website





T: +4420 7759 2199

E: [enquiries@vitaproperties.uk](mailto:enquiries@vitaproperties.uk)

Disclaimer: These particulars are prepared as a general guide for prospective purchasers or tenants and do not constitute, nor constitute part of, an offer or contract. All statements, descriptions, and measurements contained herein are given in good faith and are believed to be correct at the time of printing, but any intending purchaser or tenant should not rely on them as statements or representations of fact and must satisfy themselves by inspection or otherwise as to their correctness. Floor plans and photographs are for illustrative purposes only and may not be to scale. The position and size of doors, windows, appliances, and other features are approximate. Anti-Money Laundering (AML): In line with the Money Laundering, Terrorist Financing and Transfer of Funds Regulations 2017, we are required to carry out customer due diligence checks. Buyers/tenants will be asked to provide proof of identity, address, and source of funds before a sale or rental can be agreed. Data Protection (GDPR): Personal information supplied to Vita Properties will be processed in accordance with the General Data Protection Regulation (GDPR). Your details may be retained for legitimate business purposes relating to property services. Full details of our Privacy Policy are available on request.

All rights reserved.