



Priory Terrace

SOUTH HAMPSTEAD, LONDON, NW6

£3,000



Located on the popular Priory Terrace, this two-bedroom garden flat is a great option for anyone looking for a comfortable and well-situated home in a well-connected area.

Inside, the flat feels spacious and practical. There are two well-proportioned bedrooms with plenty of natural light, offering space for sleeping, storage, or working from home. The reception room is a flexible space that works well for everyday living or having friends over. It's easy to arrange to suit your style and needs. The kitchen and bathroom are both modern and functional. The kitchen has good storage and worktop space, while the bathroom is clean and neatly finished.

A private garden at the back adds a bit of extra space to enjoy, whether that's for a morning coffee, some light gardening, or just a spot to sit outside when the weather's good. The location is well connected, with public transport, shops, and cafés all close by. It's easy to get around, whether you're heading into the city or staying local. Priory Terrace is a quiet, residential street that offers a good balance between calm and convenience.





Available to let immediately, the flat comes unfurnished so you can make it your own. If you're after a well-kept two-bedroom flat with some outdoor space in a great spot, this could be a good fit.





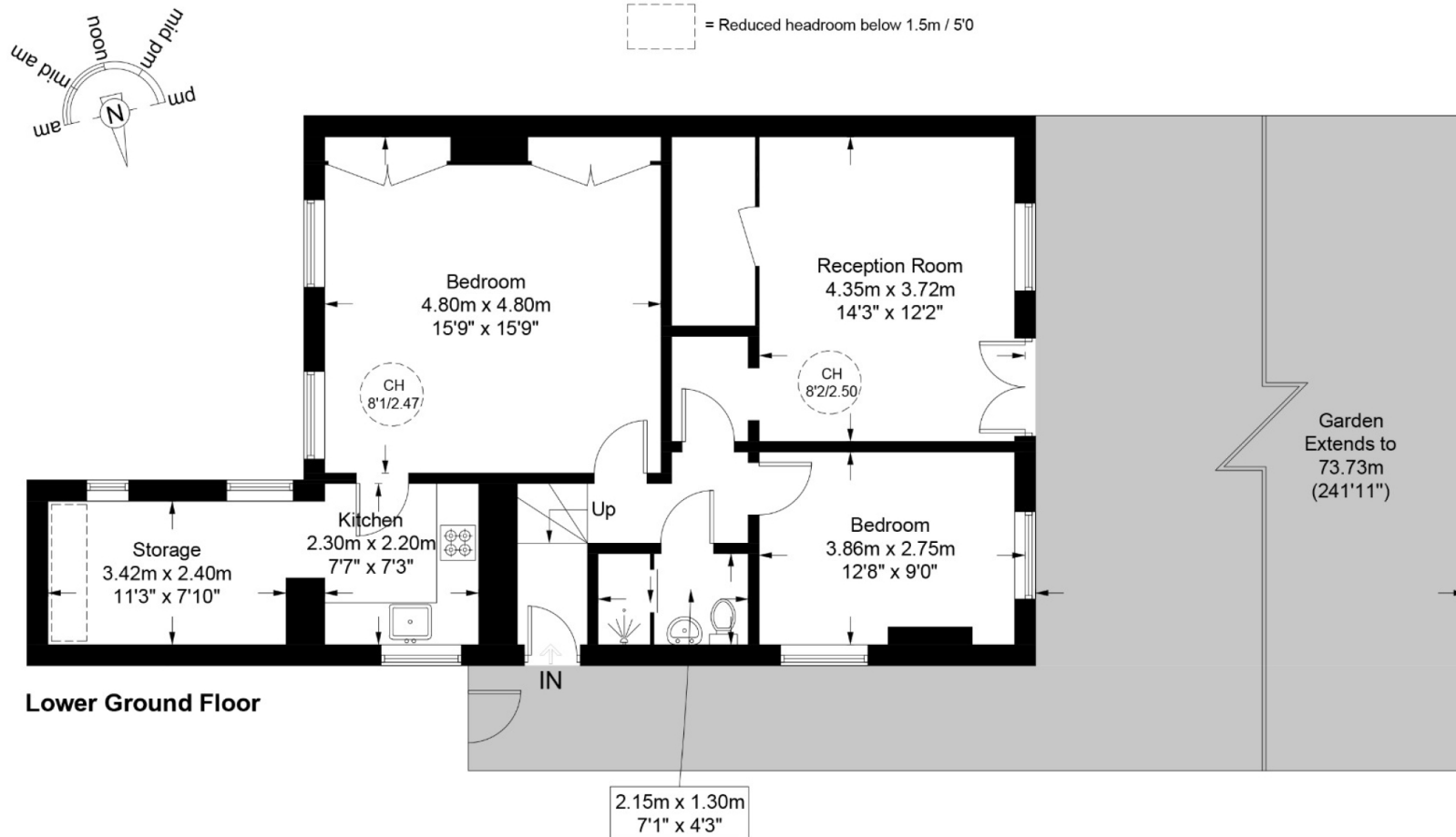




Priory Terrace, NW6

Approximate Gross Internal Area = 861 sq ft / 80.0 sq m

Restricted Height = 12 sq ft / 1.1 sq m



This plan is for layout guidance only and is not drawn to scale unless stated. All dimensions, including windows, doors, and the Total Gross Internal Area (GIA), are approximate. For precise measurements, please consult a qualified architect or surveyor before making any decisions based on this plan.



Particulars

Property

Priory Terrace, South Hampstead, London, NW6
£3,000

Rooms



1



1



2

Features

- Private Rear Garden
- Unfurnished
- Available Now
- Excellent Transport Links

Information

Council Tax



Oliver Kent

oliver.kent@vitaproperties.uk
+4477 7274 0351



Scan for our website





T: +4420 7759 2199

E: enquiries@vitaproperties.uk

Disclaimer: These particulars are prepared as a general guide for prospective purchasers or tenants and do not constitute, nor constitute part of, an offer or contract. All statements, descriptions, and measurements contained herein are given in good faith and are believed to be correct at the time of printing, but any intending purchaser or tenant should not rely on them as statements or representations of fact and must satisfy themselves by inspection or otherwise as to their correctness. Floor plans and photographs are for illustrative purposes only and may not be to scale. The position and size of doors, windows, appliances, and other features are approximate. Anti-Money Laundering (AML): In line with the Money Laundering, Terrorist Financing and Transfer of Funds Regulations 2017, we are required to carry out customer due diligence checks. Buyers/tenants will be asked to provide proof of identity, address, and source of funds before a sale or rental can be agreed. Data Protection (GDPR): Personal information supplied to Vita Properties will be processed in accordance with the General Data Protection Regulation (GDPR). Your details may be retained for legitimate business purposes relating to property services. Full details of our Privacy Policy are available on request.

All rights reserved.