



Mountview Close

HAMPSTEAD GARDEN SUBURB, LONDON, NW11

£5,000



Available from 14th July 2025, this well-appointed three-bedroom flat in Hampstead Garden Suburb offers a smart mix of space, comfort, and convenience.

Set on Mountview Close, the property suits families or professionals looking for a peaceful setting with quick access to central London. The flat includes three spacious bedrooms with large windows and neutral décor—bright, functional spaces ready to make your own. Two modern bathrooms are well designed, with clean finishes and practical layouts that suit shared living.

The reception room offers plenty of space for both relaxing and dining, while the kitchen features integrated appliances and thoughtful storage, keeping things simple and efficient. Local shops, cafes, and green spaces are all nearby, and excellent transport links make getting around easy.

A straightforward, well-located home that's ready to go. Early viewings are recommended.





Available from 14th July 2025, this well-appointed three-bedroom flat in Hampstead Garden Suburb offers a smart mix of space, comfort, and convenience.

Set on Mountview Close, the property suits families or professionals looking for a peaceful setting with quick access to central London. The flat includes three spacious bedrooms with large windows and neutral décor—bright, functional spaces ready to make your own. Two modern bathrooms are well designed, with clean finishes and practical layouts that suit shared living.

The reception room offers plenty of space for both relaxing and dining, while the kitchen features integrated appliances and thoughtful storage, keeping things simple and efficient. Local shops, cafes, and green spaces are all nearby, and excellent transport links make getting around easy.

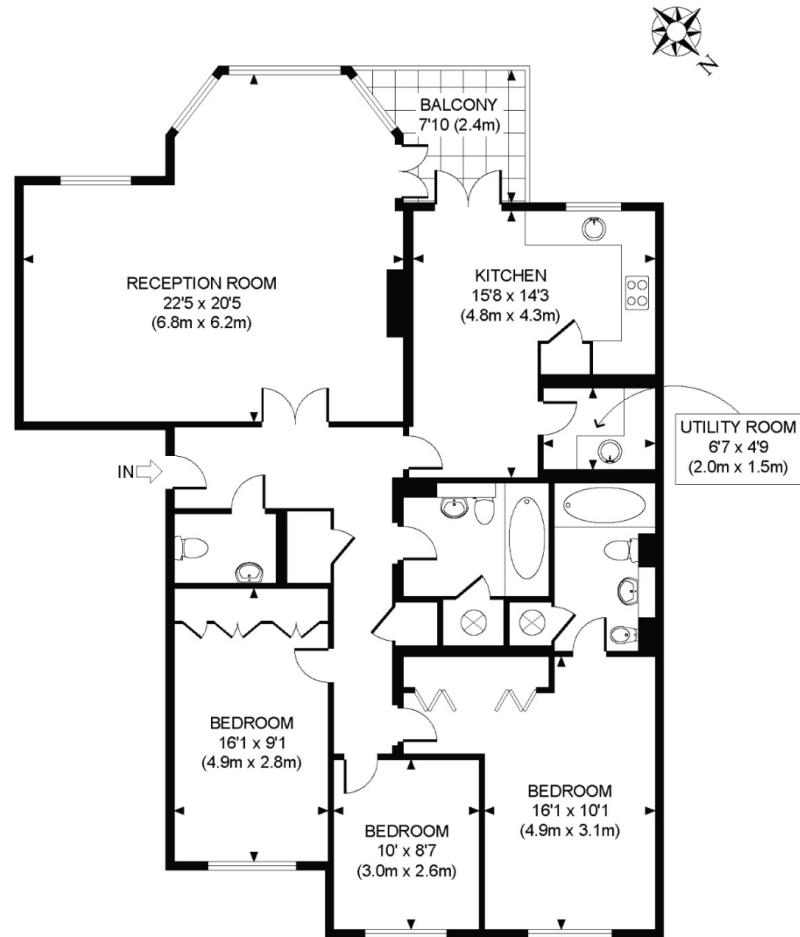
A straightforward, well-located home that's ready to go. Early viewings are recommended.







MOUNTVIEW CLOSE, NW11
TOTAL APPROX. FLOOR AREA 1367 SQ. FT. (127.0 SQ. M.)
SECOND FLOOR



Particulars

Property

Mountview Close, Hampstead Garden Suburb, London, NW11
£5,000

Rooms



1



2



3

Features

- West Facing Balcony
- Off -Street Parking For Two Cars
- Portered Block
- Gym On Site

Information

Council Tax



Oliver Kent

oliver.kent@vitaproperties.uk
+4477 7274 0351



Scan for our website





T: +4420 7759 2199
E: enquiries@vitaproperties.uk

Disclaimer: These particulars are prepared as a general guide for prospective purchasers or tenants and do not constitute, nor constitute part of, an offer or contract. All statements, descriptions, and measurements contained herein are given in good faith and are believed to be correct at the time of printing, but any intending purchaser or tenant should not rely on them as statements or representations of fact and must satisfy themselves by inspection or otherwise as to their correctness. Floor plans and photographs are for illustrative purposes only and may not be to scale. The position and size of doors, windows, appliances, and other features are approximate. Anti-Money Laundering (AML): In line with the Money Laundering, Terrorist Financing and Transfer of Funds Regulations 2017, we are required to carry out customer due diligence checks. Buyers/tenants will be asked to provide proof of identity, address, and source of funds before a sale or rental can be agreed. Data Protection (GDPR): Personal information supplied to Vita Properties will be processed in accordance with the General Data Protection Regulation (GDPR). Your details may be retained for legitimate business purposes relating to property services. Full details of our Privacy Policy are available on request.

All rights reserved.