



## Athena Court

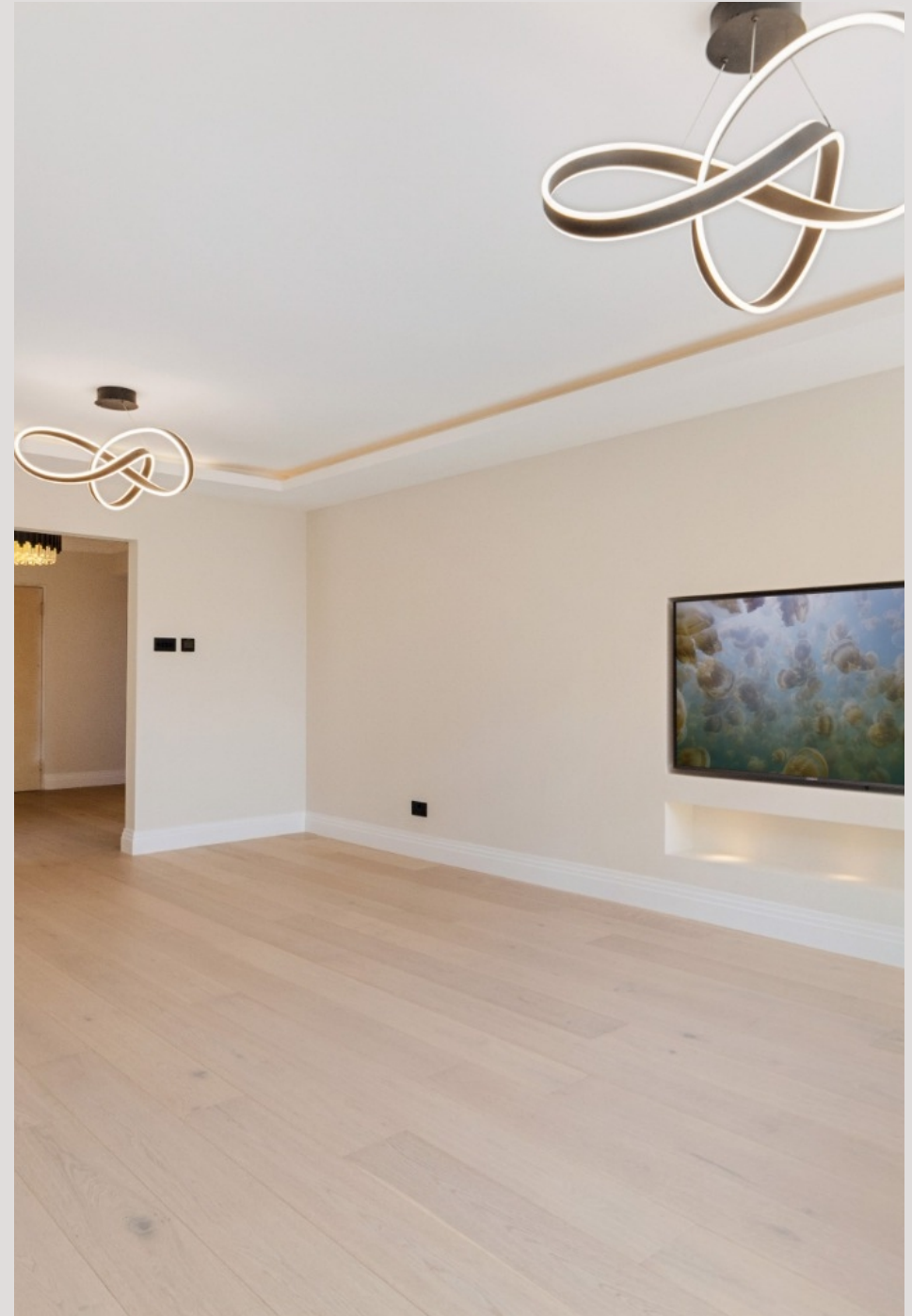
2 FINCHLEY ROAD, LONDON, GREATER LONDON, NW8

£7,500



SHORT LET - This exceptionally refurbished two-bedroom, two-bathroom residence is set within a sought-after block in the heart of St. John's Wood. Positioned on the second floor (with lift), the apartment has been fully refurbished to a high standard, offering a perfect blend of modern style and comfort. It features two spacious bedrooms with custom-fitted wardrobes, a large reception room, and a separate eat-in kitchen diner with premium appliances. The flat oozes with natural light throughout and offers the potential of an allocated off street parking space.

Residents also benefit from walking distance to St John Wood High Street, Regent's Park and the seconds to the tube, this property offers outstanding city living in one of London's most desirable locations.





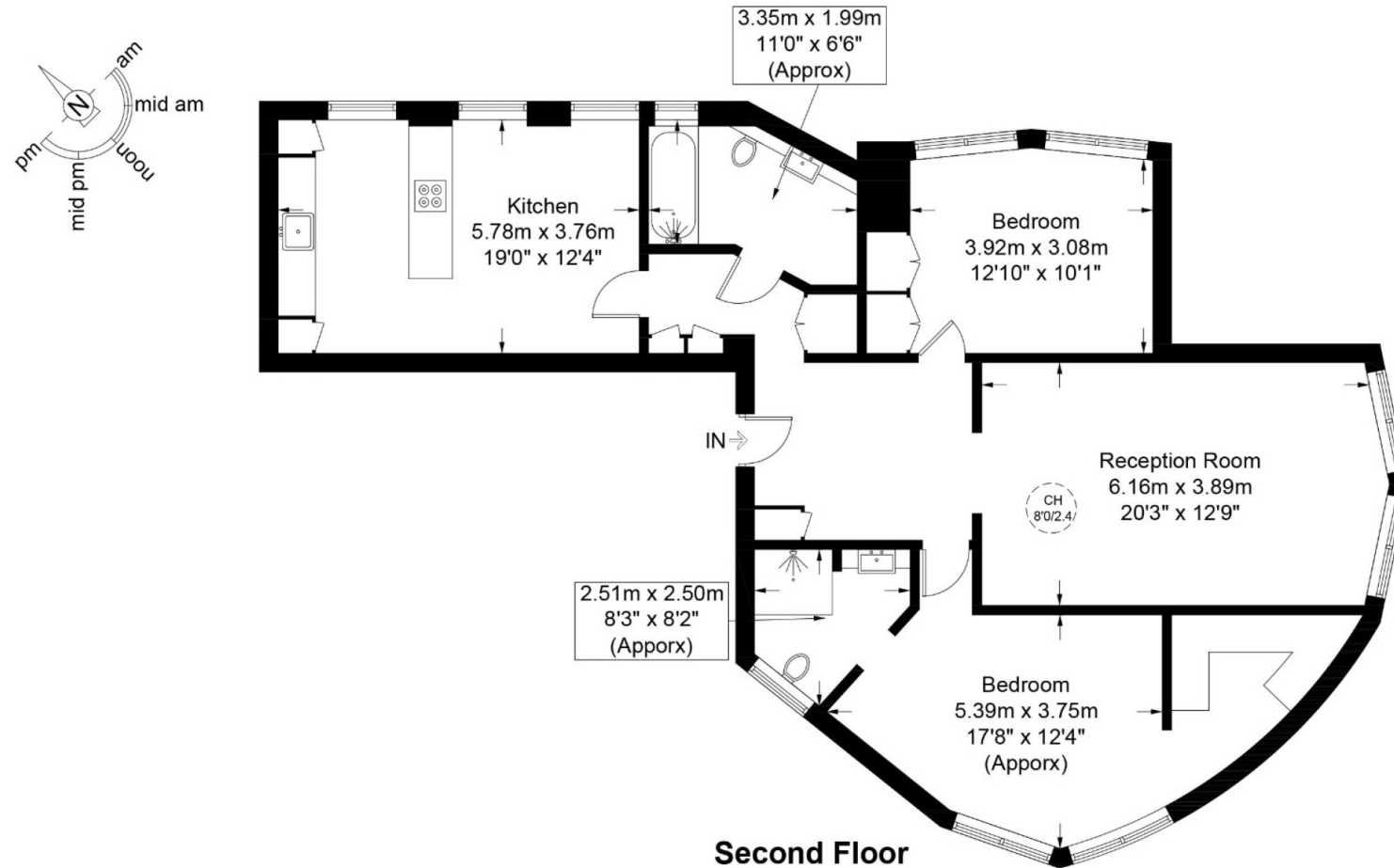






# Athena Court, NW8

Approximate Gross Internal Area = 1227 sq ft / 114.0 sq m



This plan is for layout guidance only and is not drawn to scale unless stated. All dimensions, including windows, doors, and the Total Gross Internal Area (GIA), are approximate. For precise measurements, please consult a qualified architect or surveyor before making any decisions based on this plan.



# Particulars

## Property

Athena Court, 2 Finchley Road, London, Greater London,  
£7500

## Rooms



2



2



2

## Features

- Brand Newly Renovated
- Seconds to Tube
- Impecible Finish
- Two Double Bedrooms

## Information

Council Tax



Oliver Kent

oliver.kent@vitaproperties.uk  
+4477 7274 0351



Scan for our website





T: +4420 7759 2199  
E: [enquiries@vitaproperties.uk](mailto:enquiries@vitaproperties.uk)

Disclaimer: These particulars are prepared as a general guide for prospective purchasers or tenants and do not constitute, nor constitute part of, an offer or contract. All statements, descriptions, and measurements contained herein are given in good faith and are believed to be correct at the time of printing, but any intending purchaser or tenant should not rely on them as statements or representations of fact and must satisfy themselves by inspection or otherwise as to their correctness. Floor plans and photographs are for illustrative purposes only and may not be to scale. The position and size of doors, windows, appliances, and other features are approximate. Anti-Money Laundering (AML): In line with the Money Laundering, Terrorist Financing and Transfer of Funds Regulations 2017, we are required to carry out customer due diligence checks. Buyers/tenants will be asked to provide proof of identity, address, and source of funds before a sale or rental can be agreed. Data Protection (GDPR): Personal information supplied to Vita Properties will be processed in accordance with the General Data Protection Regulation (GDPR). Your details may be retained for legitimate business purposes relating to property services. Full details of our Privacy Policy are available on request.

All rights reserved.