



Ridley Road

KENSAL GREEN, LONDON, NW10

£600,000



Kate Brookfield x Vita Properties present this stunning, interior designed garden apartment in Kensal Green, NW10.

This two-bedroom home blends restored period charm with vibrant, contemporary style. As you enter, a bright hallway with original floor tiles invites you into the home.

A spacious living room with high ceilings and original wooden floors is situated to the front of the apartment, with bespoke alcove shelving and an eye catching period fireplace.

The principal bedroom features a bank of floor to ceiling fitted wardrobes and another original fireplace feature. The second bedroom features Common Room wallpaper and playful colour scheme.

The standout kitchen/dining area is located to the rear of the home, with large island with bar seating, a beautifully tiled splash back with tiles by Milagros and bi-folding doors opening onto a west-facing garden—perfect for entertaining or relaxing in the evening sun. Bright, joyful spaces and a seamless social flow make this apartment a true interior design dream.

Guide price £650,000 - £675,000





Find the contact on Instagram @Kate_the_agent



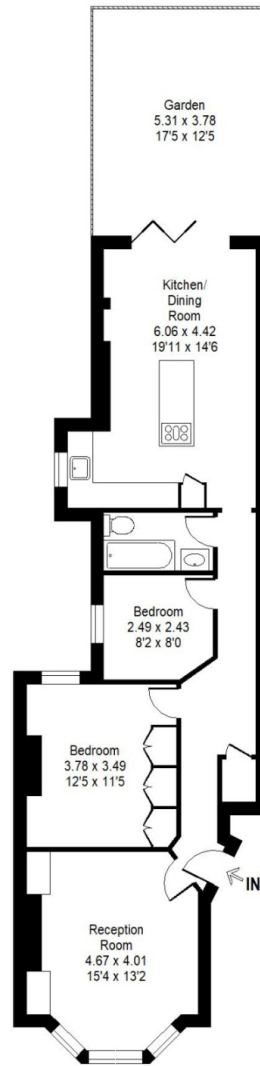
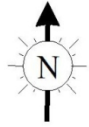






Scan for out video walkthrough





Ground Floor

Ridley Road, NW10 5UA

Total Internal Area = 802 sq ft / 74.5 sq m

For identification only - Not to scale

Whilst every attempt has been made to ensure the accuracy of the floor plan contained here, measurements of doors, windows, rooms and any other items are approximate and no responsibility is taken for any error, omission or mis statement. This plan is for illustrative purposes only and should be used as such by any prospective purchaser. The services, systems and appliances shown have not been tested and no guarantee as to their operability or efficiency can be given.

Particulars

Property

Ridley Road, Kensal Green, London, NW10
£600,000

Rooms



2



1



2

Features

- Guide price £650,000 - £675,000
- Interior designed home
- West facing garden
- Stunning kitchen/dining space

Information

Council Tax

Score	Energy rating	Current	Potential
92+	A		
81-91	B		
69-80	C	70 C	79 C
55-68	D		
39-54	E		
21-38	F		
1-20	G		



Scan for our website





T: +4420 7759 2199

E: enquiries@vitaproperties.uk

Disclaimer: These particulars are prepared as a general guide for prospective purchasers or tenants and do not constitute, nor constitute part of, an offer or contract. All statements, descriptions, and measurements contained herein are given in good faith and are believed to be correct at the time of printing, but any intending purchaser or tenant should not rely on them as statements or representations of fact and must satisfy themselves by inspection or otherwise as to their correctness. Floor plans and photographs are for illustrative purposes only and may not be to scale. The position and size of doors, windows, appliances, and other features are approximate. Anti-Money Laundering (AML): In line with the Money Laundering, Terrorist Financing and Transfer of Funds Regulations 2017, we are required to carry out customer due diligence checks. Buyers/tenants will be asked to provide proof of identity, address, and source of funds before a sale or rental can be agreed. Data Protection (GDPR): Personal information supplied to Vita Properties will be processed in accordance with the General Data Protection Regulation (GDPR). Your details may be retained for legitimate business purposes relating to property services. Full details of our Privacy Policy are available on request.

All rights reserved.