



Oldfield Road

HARLESDEN, LONDON NW10

£675,000



Kate Brookfield x Vita Properties present this wonderful three bedroom mid terrace house, located moments to the beautiful Roundwood Park NW10.

With opportunity to extend both on the ground floor and into the loft (STPP) this lovely home has been tastefully modernised allowing any buyer to move in and enjoy with the comfort of knowing that additional space could be added in the future should they wish.

The ground floor comprises a large kitchen through to dining space with double aspect, high ceilings and original period details. A generous living room is located to the rear of the home with doors directly onto a very pretty garden. A smart guest WC completes the ground floor.

The first floor offers three large bedrooms with high ceilings and a stunning bathroom.



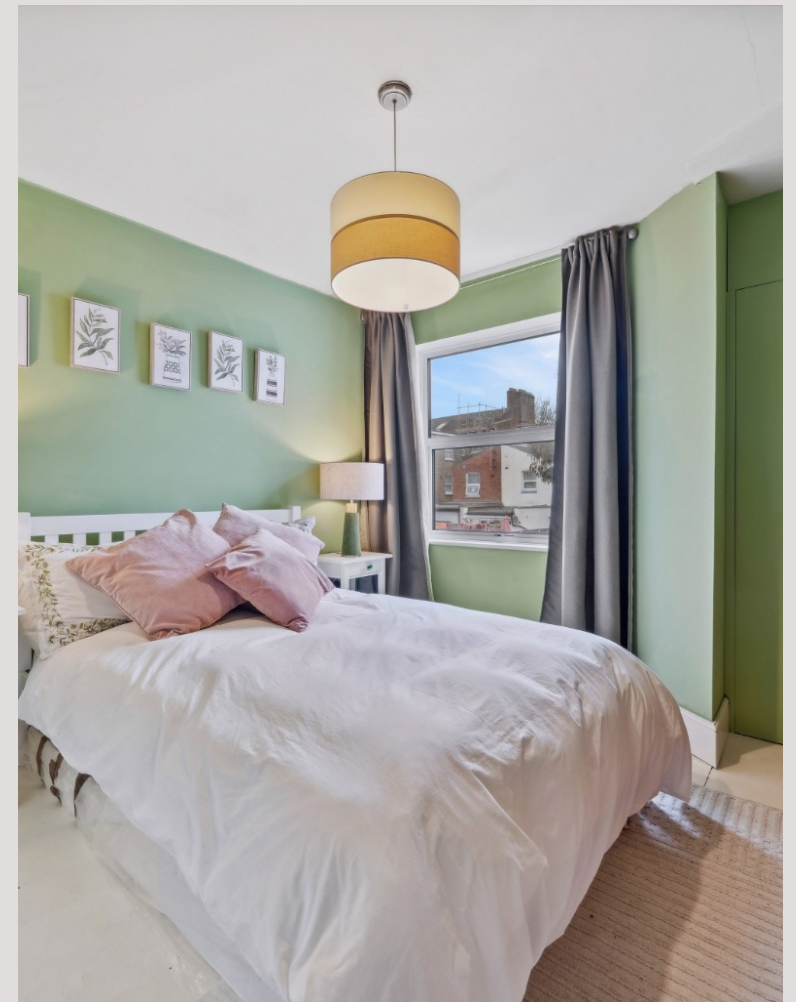








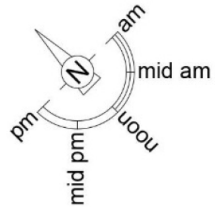
Scan for out video walkthrough



Oldfield Road, NW10

Approximate Gross Internal Area = 1317 sq ft / 122.4 sq m

Restricted Height = 3 sq ft / 0.3 sq m



This plan is for layout guidance only and is not drawn to scale unless stated. All dimensions, including windows, doors, and the Total Gross Internal Area (GIA), are approximate. For precise measurements, please consult a qualified architect or surveyor before making any decisions based on this plan.



Particulars

Property

Oldfield Road, Harlesden, London NW10
£675,000

Rooms



2



1



3

Features

- Charming three bedroom house
- Mid terrace period home
- Pretty rear garden
- Three bedrooms

Information

Council Tax



Oliver Kent

oliver.kent@vitaproperties.uk
+4477 7274 0351



Scan for our website





T: +4420 7759 2199

E: enquiries@vitaproperties.uk

Disclaimer: These particulars are prepared as a general guide for prospective purchasers or tenants and do not constitute, nor constitute part of, an offer or contract. All statements, descriptions, and measurements contained herein are given in good faith and are believed to be correct at the time of printing, but any intending purchaser or tenant should not rely on them as statements or representations of fact and must satisfy themselves by inspection or otherwise as to their correctness. Floor plans and photographs are for illustrative purposes only and may not be to scale. The position and size of doors, windows, appliances, and other features are approximate. Anti-Money Laundering (AML): In line with the Money Laundering, Terrorist Financing and Transfer of Funds Regulations 2017, we are required to carry out customer due diligence checks. Buyers/tenants will be asked to provide proof of identity, address, and source of funds before a sale or rental can be agreed. Data Protection (GDPR): Personal information supplied to Vita Properties will be processed in accordance with the General Data Protection Regulation (GDPR). Your details may be retained for legitimate business purposes relating to property services. Full details of our Privacy Policy are available on request.

All rights reserved.