



Sherriff Road

LONDON, GREATER LONDON, NW6

£2,695,000



## A Stunning 4-Bedroom, 4-Bathroom Period Home in Prime West Hampstead

This exceptional double-fronted period home (2,606 sq ft) has been fully renovated to an impeccable standard, offering a perfect blend of elegance, space, and modern convenience in one of West Hampstead's most desirable locations.

Spanning three well-planned floors, this home is designed for sophisticated family living and entertaining

### Key Features:

Two Spacious Reception Rooms ? Ideal for both formal entertaining and relaxed family time.

Showstopping Open-Plan Kitchen & Living Area ?

A beautifully designed space opening onto a private 41<sup>WRITE TO US</sup> x 37<sup>WRITE TO US</sup> garden

Four Generous Double Bedrooms Including a luxurious principal suite with a dressing room and en-suite shower room.

Four Stylish Bathrooms ? Three en-suites plus a separate family bathroom.

Utility Room & Cloakroom

Prime Location:





Located on Sherriff Road this home is just minutes from West Hampstead, South Hampstead, and Finchley Road stations, offering Underground and Overground links

Enjoy boutique shops, charming cafés, and top-rated restaurants just moments away. Green spaces and the popular West Hampstead Farmers' Market add to the vibrant local lifestyle.

This is a rare opportunity to own a turnkey family home in a prestigious London neighborhood.





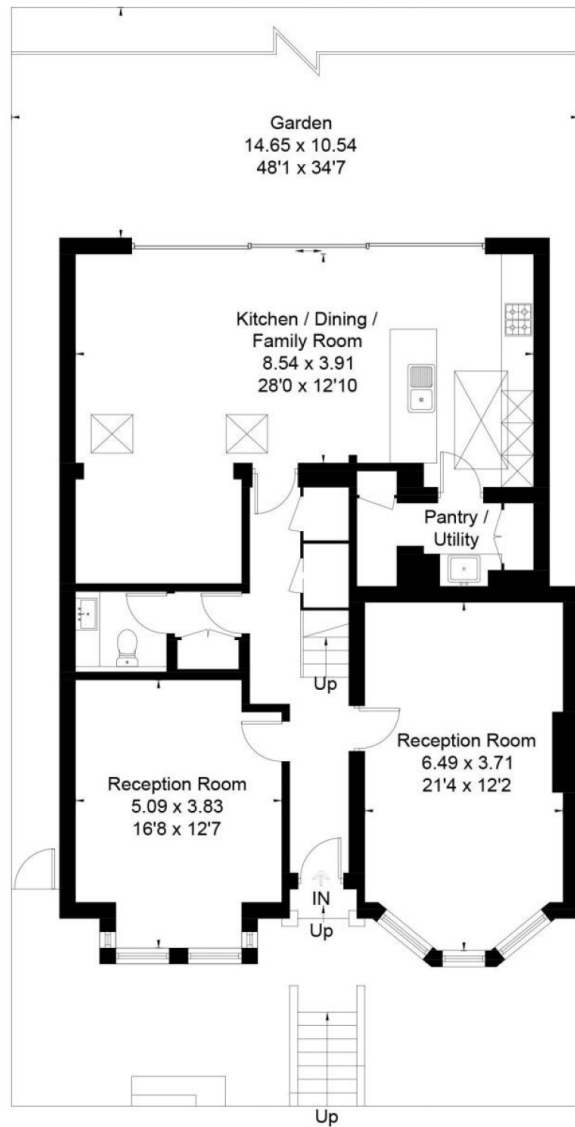




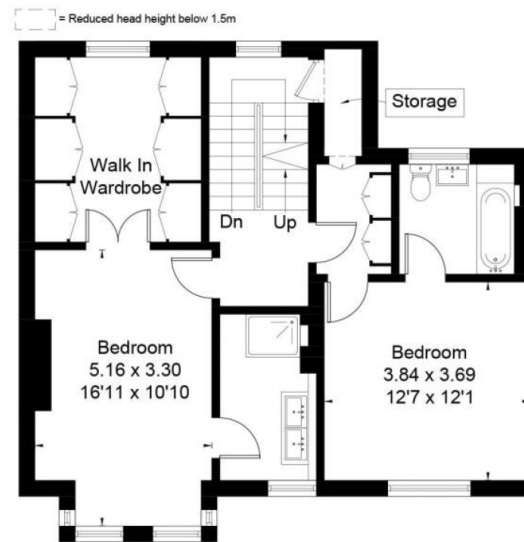
Scan for out video walkthrough



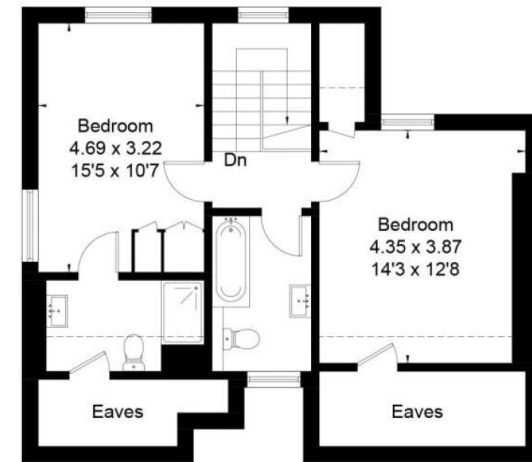
Approximate Floor Area = 242.1 sq m / 2606 sq ft



Ground Floor



First Floor



Second Floor



This floor plan has been drawn in accordance with RICS Property Measurement 2nd edition.

All measurements, including the floor area, are approximate and for illustrative purposes only. @fourwalls-group.com #86037

# Particulars

## Property

Sherriff Road, London, Greater London, NW6  
£2,695,000

## Rooms



3



4



4

## Features

- Double Fronted
- Turn Key
- Large Garden with Acoustic Fencing
- Moments to Transport

## Information

Council Tax



Jonathan Singer

jonathan.singer@vitaproperties.uk  
+4478 8428 6414



Scan for our website





T: +4420 7759 2199

E: [enquiries@vitaproperties.uk](mailto:enquiries@vitaproperties.uk)

Disclaimer: These particulars are prepared as a general guide for prospective purchasers or tenants and do not constitute, nor constitute part of, an offer or contract. All statements, descriptions, and measurements contained herein are given in good faith and are believed to be correct at the time of printing, but any intending purchaser or tenant should not rely on them as statements or representations of fact and must satisfy themselves by inspection or otherwise as to their correctness. Floor plans and photographs are for illustrative purposes only and may not be to scale. The position and size of doors, windows, appliances, and other features are approximate. Anti-Money Laundering (AML): In line with the Money Laundering, Terrorist Financing and Transfer of Funds Regulations 2017, we are required to carry out customer due diligence checks. Buyers/tenants will be asked to provide proof of identity, address, and source of funds before a sale or rental can be agreed. Data Protection (GDPR): Personal information supplied to Vita Properties will be processed in accordance with the General Data Protection Regulation (GDPR). Your details may be retained for legitimate business purposes relating to property services. Full details of our Privacy Policy are available on request.

All rights reserved.