



## Court Close

ST JOHNS WOOD PARK, LONDON, NW8

£12,783



A spacious and modern four bedroom house available in this prestigious gated development, St Johns Wood, NW8.

This property comprises of a sizable open-plan kitchen, living-room & dining area, which leads onto a large private conservatory & garden. A large master bedroom with enviably large walk-in wardrobe, en-suite bathroom access and direct access onto the terrace. You have three further double bedrooms - all offering built in wardrobes. You have a further three bathrooms, all in excellent condition.

This property boasts many additional benefits, including air conditioning in all rooms, multi-jet powered showers, dimmable light switches in all rooms as well as a dedicated 24 hour concierge.

The property is within walking distance of St John's Wood and Swiss Cottage Underground Station (Jubilee Line) and moments from Regents Park





A spacious and modern four bedroom house available in this prestigious gated development, St Johns Wood, NW8.

This property comprises of a sizable open-plan kitchen, living-room & dining area, which leads onto a large private conservatory & garden. A large master bedroom with enviably large walk-in wardrobe, en-suite bathroom access and direct access onto the terrace. You have three further double bedrooms - all offering built in wardrobes. You have a further three bathrooms, all in excellent condition.

This property boasts many additional benefits, including air conditioning in all rooms, multi-jet powered showers, dimmable light switches in all rooms as well as a dedicated 24 hour concierge.

The property is within walking distance of St John's Wood and Swiss Cottage Underground Station (Jubilee Line) and moments from Regents Park



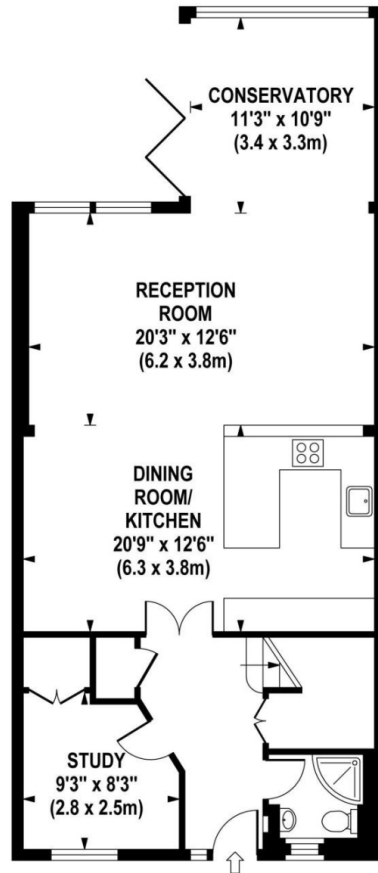




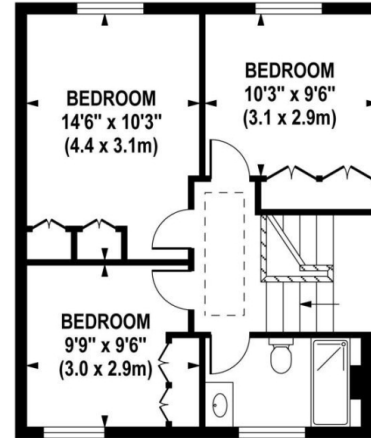


# COURT HOUSE

Approximate Gross Internal Area 1895 sq ft / 176.0 sq m



GROUND FLOOR  
GROSS INTERNAL  
FLOOR AREA 891 SQ FT



SECOND FLOOR  
GROSS INTERNAL  
FLOOR AREA 502 SQ FT



FIRST FLOOR  
GROSS INTERNAL  
FLOOR AREA 502 SQ FT

Although every attempt has been made to ensure accuracy, all measurements are approximate. The floor plan's for illustrative purposes only and not to scale. Measured in accordance to RICS standards.

# Particulars

## Property

Court Close, St Johns Wood Park, London, NW8  
£12,783

## Rooms



## Features

- Terraced House
- Abundance of Outside Space
- Private Gated Development
- 24 Hour Concierge

## Information

Council Tax



Phoebe Knight

phoebe@vitaproperties.uk  
+44 7493100161



Scan for our website





T: +4420 7759 2199

E: [enquiries@vitaproperties.uk](mailto:enquiries@vitaproperties.uk)

Disclaimer: These particulars are prepared as a general guide for prospective purchasers or tenants and do not constitute, nor constitute part of, an offer or contract. All statements, descriptions, and measurements contained herein are given in good faith and are believed to be correct at the time of printing, but any intending purchaser or tenant should not rely on them as statements or representations of fact and must satisfy themselves by inspection or otherwise as to their correctness. Floor plans and photographs are for illustrative purposes only and may not be to scale. The position and size of doors, windows, appliances, and other features are approximate. Anti-Money Laundering (AML): In line with the Money Laundering, Terrorist Financing and Transfer of Funds Regulations 2017, we are required to carry out customer due diligence checks. Buyers/tenants will be asked to provide proof of identity, address, and source of funds before a sale or rental can be agreed. Data Protection (GDPR): Personal information supplied to Vita Properties will be processed in accordance with the General Data Protection Regulation (GDPR). Your details may be retained for legitimate business purposes relating to property services. Full details of our Privacy Policy are available on request.

All rights reserved.