



Chelmsford Square  
KENSAL RISE, LONDON NW10

£3,000,000



Kate Brookfield x Vita Properties present this truly beautiful semi detached family home, on Chelmsford Sqaure NW10.

This exceptional property boasts a coveted corner plot on a highly desirable road, complete with access to a stunning communal green and gated tennis courts. Fully renovated in 2021, the home has been thoughtfully extended to provide over 3,000 square feet of high specification accommodation spread across three floors.

The ground floor features a nearly open-plan design, enhanced by internal crittal doors and glazing that offer subtle separation between spaces. The centerpiece is a bespoke kitchen, complete with an island that comfortably seats six people. Adjacent to this, a generous dining area is illuminated by an oriel window and opens through full-width sliding doors to the garden. A cozy wood-burning stove is integrated into a seating area that leads back to the wide entrance foyer. Additionally, a second wood-burning stove enhances the formal living space, which includes a hidden door leading to an office or den, featuring French doors that open to the front garden. A large utility room, conveniently located next to the kitchen, includes rear garden access and a guest bathroom.





On the first floor, you'll find three spacious double bedrooms, a family bathroom, and a principal bedroom with an en suite and a private terrace. The second floor offers an expansive bedroom with its own en suite bathroom, perfect for guests or family members seeking privacy. The property further benefits from off-street parking, a double garage, and beautifully landscaped front and rear gardens, making it an ideal family home that combines modern living with community amenities.









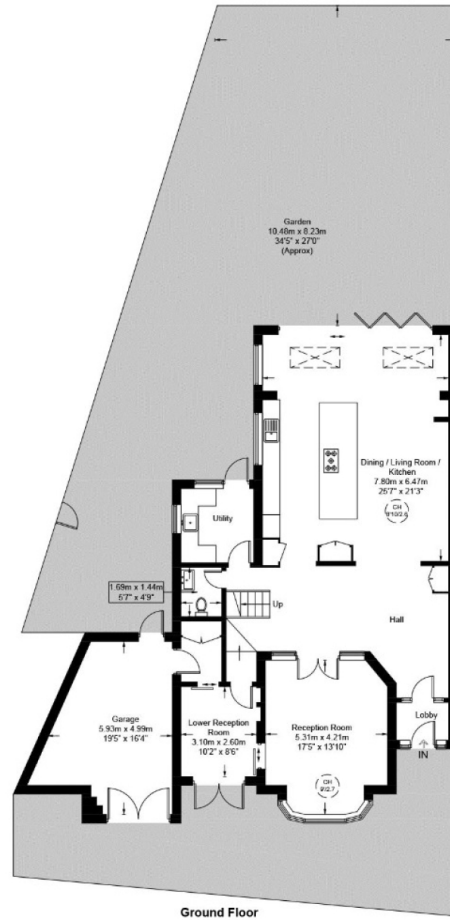
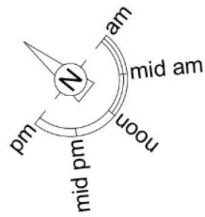
Scan for out video walkthrough



# Chelmsford Square, NW10

Approximate Gross Internal Area = 3208 sq ft / 298.1 sq m

Restricted Height = 105 sq ft / 9.8 sq m



This plan is for layout guidance only and is not drawn to scale unless stated. All dimensions, including windows, doors, and the Total Gross Internal Area (GIA), are approximate. For precise measurements, please consult a qualified architect or surveyor before making any decisions based on this plan.



# Particulars

## Property

Chelmsford Square, Kensal Rise, London NW10  
£3,000,000

## Rooms



3



3



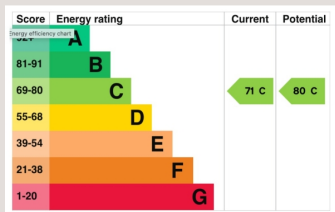
5

## Features

- Exceptional five bedroom family house
- Fully renovated and extended
- Off street parking and garage
- Highly desirable location in Kensal Rise

## Information

Council Tax



Kate Brookfield

[Kate.brookfield@vitaproperties.uk](mailto:Kate.brookfield@vitaproperties.uk)  
+4478 1365 5431



Scan for our website





T: +4420 7759 2199  
E: [enquiries@vitaproperties.uk](mailto:enquiries@vitaproperties.uk)

Disclaimer: These particulars are prepared as a general guide for prospective purchasers or tenants and do not constitute, nor constitute part of, an offer or contract. All statements, descriptions, and measurements contained herein are given in good faith and are believed to be correct at the time of printing, but any intending purchaser or tenant should not rely on them as statements or representations of fact and must satisfy themselves by inspection or otherwise as to their correctness. Floor plans and photographs are for illustrative purposes only and may not be to scale. The position and size of doors, windows, appliances, and other features are approximate. Anti-Money Laundering (AML): In line with the Money Laundering, Terrorist Financing and Transfer of Funds Regulations 2017, we are required to carry out customer due diligence checks. Buyers/tenants will be asked to provide proof of identity, address, and source of funds before a sale or rental can be agreed. Data Protection (GDPR): Personal information supplied to Vita Properties will be processed in accordance with the General Data Protection Regulation (GDPR). Your details may be retained for legitimate business purposes relating to property services. Full details of our Privacy Policy are available on request.

All rights reserved.