



## Spezia Road

KENSAL GREEN, LONDON NW10

£700,000



Kate Brookfield x Vita Properties present this truly special garden apartment, in Kensal Green NW10. This home offers a generous split-level, open-plan living space that seamlessly extends to a tranquil private garden, creating a sense of serene seclusion.

The calm aesthetic is enhanced by the use of birch plywood throughout the kitchen and dining area, complemented by bespoke fitted cabinetry and a built-in dining bench that thoughtfully defines the space.

Skylights above the sitting area and French doors leading to the garden invite an abundance of natural light into the entire room.

At the front of the home, a spacious principal bedroom boasts high ceilings and an original fireplace, while a fully tiled shower room sits opposite. A second bedroom, located just off the sitting area, is ideal for use as a guest room or home office.

Find the content on Instagram @Kate\_the\_agent





Kate Brookfield x Vita Properties present this truly special garden apartment, in Kensal Green NW10.

This home offers a generous split-level, open-plan living space that seamlessly extends to a tranquil private garden, creating a sense of serene seclusion.

The calm aesthetic is enhanced by the use of birch plywood throughout the kitchen and dining area, complemented by bespoke fitted cabinetry and a built-in dining bench that thoughtfully defines the space.

Skylights above the sitting area and French doors leading to the garden invite an abundance of natural light into the entire room.

At the front of the home, a spacious principal bedroom boasts high ceilings and an original fireplace, while a fully tiled shower room sits opposite. A second bedroom, located just off the sitting area, is ideal for use as a guest room or home office.

Find the content on Instagram @Kate\_the\_agent





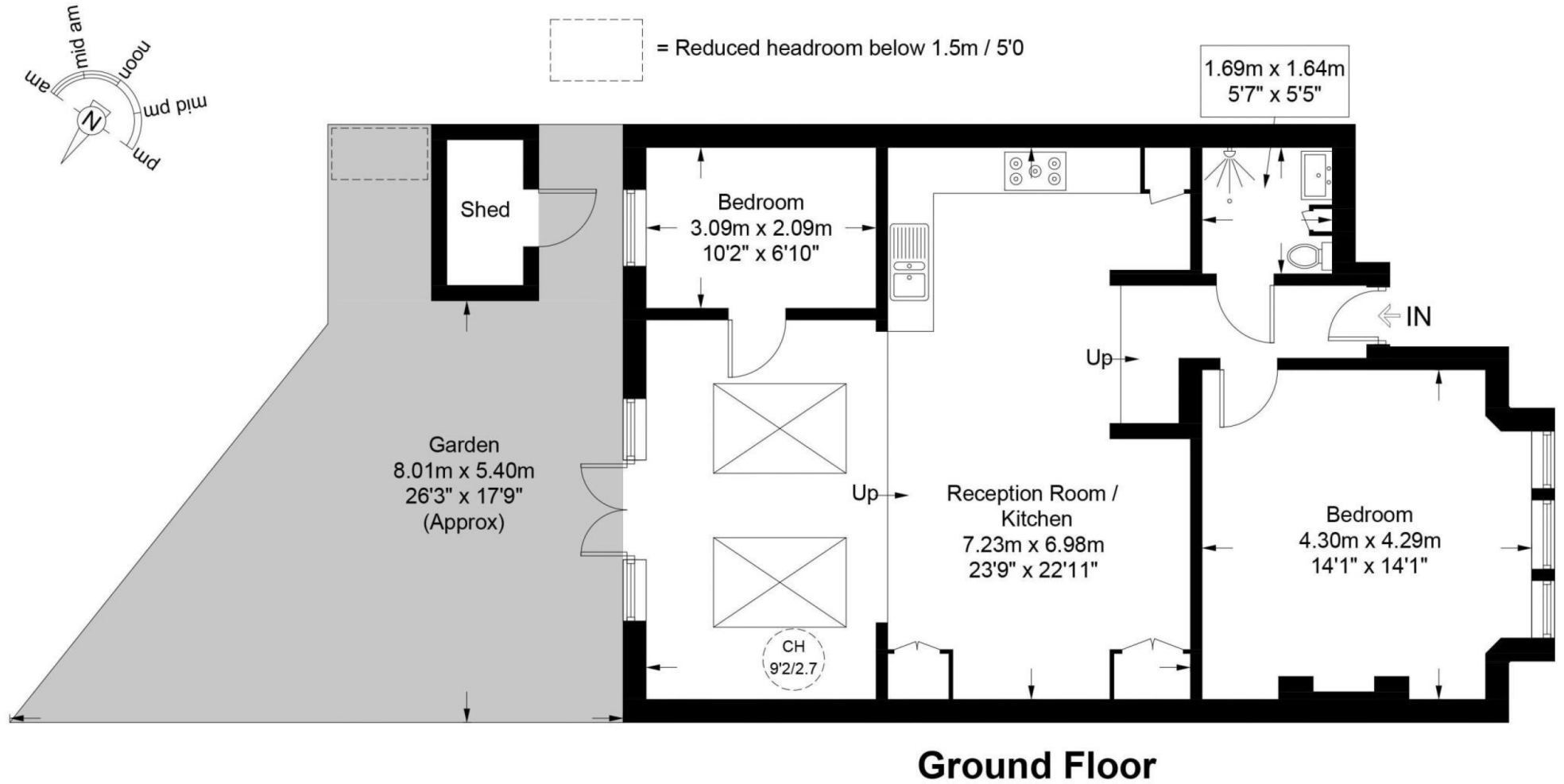




# Spezia Road, NW10

Approximate Gross Internal Area = 833 sq ft / 77.4 sq m

Shed = 20 sq ft / 1.9 sq m



This plan is for layout guidance only and is not drawn to scale unless stated. All dimensions, including windows, doors, and the Total Gross Internal Area (GIA), are approximate. For precise measurements, please consult a qualified architect or surveyor before making any decisions based on this plan.



Certified  
Property  
Measurer

# Particulars

## Property

Spezia Road, Kensal Green, London NW10  
£700,000

## Rooms



1



1



2

## Features

- Stunning garden apartment
- Two bedrooms
- Bespoke fittings
- Beautiful road in Kensal Green

## Information

Council Tax



Kate Brookfield

Kate.brookfield@vitaproperties.uk  
+4478 1365 5431



Scan for our website





T: +4420 7759 2199

E: [enquiries@vitaproperties.uk](mailto:enquiries@vitaproperties.uk)

Disclaimer: These particulars are prepared as a general guide for prospective purchasers or tenants and do not constitute, nor constitute part of, an offer or contract. All statements, descriptions, and measurements contained herein are given in good faith and are believed to be correct at the time of printing, but any intending purchaser or tenant should not rely on them as statements or representations of fact and must satisfy themselves by inspection or otherwise as to their correctness. Floor plans and photographs are for illustrative purposes only and may not be to scale. The position and size of doors, windows, appliances, and other features are approximate. Anti-Money Laundering (AML): In line with the Money Laundering, Terrorist Financing and Transfer of Funds Regulations 2017, we are required to carry out customer due diligence checks. Buyers/tenants will be asked to provide proof of identity, address, and source of funds before a sale or rental can be agreed. Data Protection (GDPR): Personal information supplied to Vita Properties will be processed in accordance with the General Data Protection Regulation (GDPR). Your details may be retained for legitimate business purposes relating to property services. Full details of our Privacy Policy are available on request.

All rights reserved.