



Lushington Road  
KENSAL GREEN, LONDON NW10

£750,000



Kate Brookfield x Vita Properties present this beautiful two bedroom, two bathroom garden apartment in Kensal Green NW10

Located on one of the most sought-after roads just west of All Souls Avenue, this exceptional home has been thoughtfully renovated by the current owner. It is offered as a share of freehold, with sole ownership of the front driveway and the entire rear garden.

Boasting high ceilings and restored period details, the standout feature of this apartment is the expansive double living spaces at the front of the property. These create a seamless flow between the kitchen/dining area and the elegant living room, which is highlighted by bespoke alcove shelving framing a stunning fireplace. Towards the rear of the apartment, you'll find two generously sized double bedrooms and two bathrooms, one of which is en suite to the principal bedroom.

The west-facing garden includes a spacious side return with potential for extension (STPP), an apple tree, and a large sun deck.





Kate Brookfield x Vita Properties present this beautiful two bedroom, two bathroom garden apartment in Kensal Green NW10

Located on one of the most sought-after roads just west of All Souls Avenue, this exceptional home has been thoughtfully renovated by the current owner. It is offered as a share of freehold, with sole ownership of the front driveway and the entire rear garden.

Boasting high ceilings and restored period details, the standout feature of this apartment is the expansive double living spaces at the front of the property. These create a seamless flow between the kitchen/dining area and the elegant living room, which is highlighted by bespoke alcove shelving framing a stunning fireplace. Towards the rear of the apartment, you'll find two generously sized double bedrooms and two bathrooms, one of which is en suite to the principal bedroom.

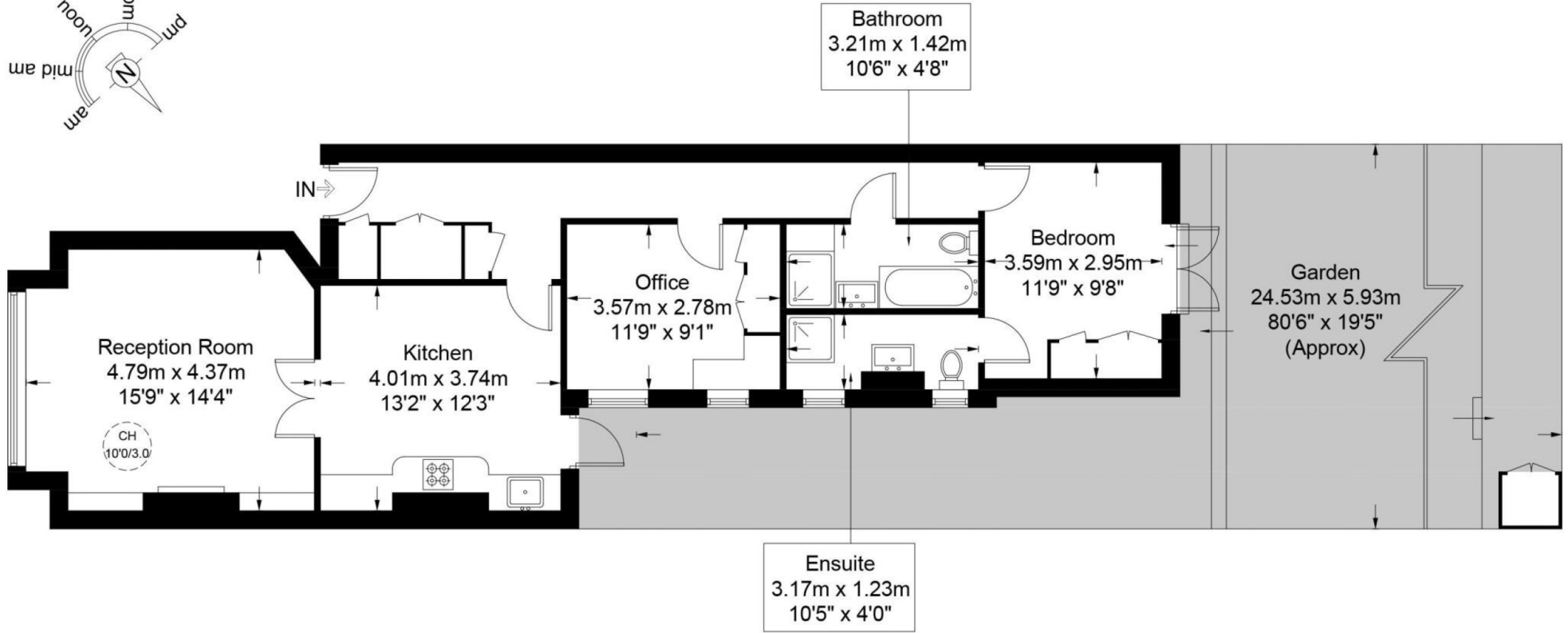
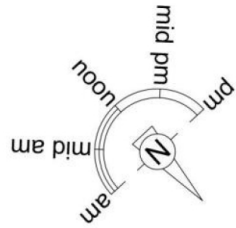
The west-facing garden includes a spacious side return with potential for extension (STPP), an apple tree, and a large sun deck.











**Ground Floor**

This plan is for layout guidance only and is not drawn to scale unless stated. All dimensions, including windows, doors, and the Total Gross Internal Area (GIA), are approximate. For precise measurements, please consult a qualified architect or surveyor before making any decisions based on this plan.



# Particulars

## Property

Lushington Road, Kensal Green, London NW10  
£750,000

## Rooms



1



2



2

## Features

- Potential To Extension (STPP)
- Garden Apartment
- Restored Period Details
- Double Living Space

## Information

Council Tax

| Score | Energy rating | Current | Potential |
|-------|---------------|---------|-----------|
| 92+   | A             |         |           |
| 81-91 | B             |         |           |
| 69-80 | C             | 72 C    | 77 C      |
| 55-68 | D             |         |           |
| 39-54 | E             |         |           |
| 21-38 | F             |         |           |
| 1-20  | G             |         |           |

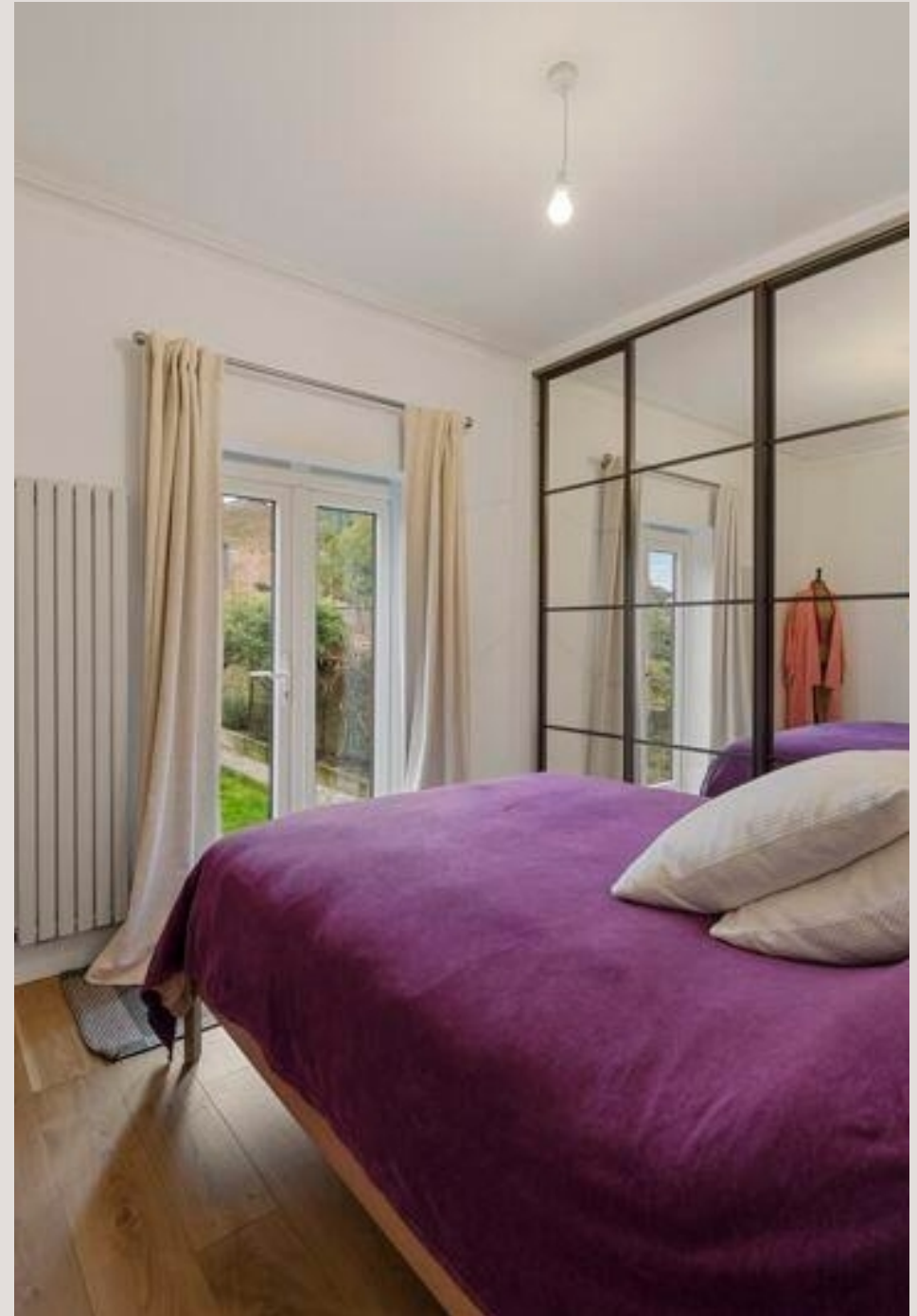


Kate Brookfield

Kate.brookfield@vitaproperties.uk  
+4478 1365 5431



Scan for our website





T: +4420 7759 2199

E: [enquiries@vitaproperties.uk](mailto:enquiries@vitaproperties.uk)

Disclaimer: These particulars are prepared as a general guide for prospective purchasers or tenants and do not constitute, nor constitute part of, an offer or contract. All statements, descriptions, and measurements contained herein are given in good faith and are believed to be correct at the time of printing, but any intending purchaser or tenant should not rely on them as statements or representations of fact and must satisfy themselves by inspection or otherwise as to their correctness. Floor plans and photographs are for illustrative purposes only and may not be to scale. The position and size of doors, windows, appliances, and other features are approximate. Anti-Money Laundering (AML): In line with the Money Laundering, Terrorist Financing and Transfer of Funds Regulations 2017, we are required to carry out customer due diligence checks. Buyers/tenants will be asked to provide proof of identity, address, and source of funds before a sale or rental can be agreed. Data Protection (GDPR): Personal information supplied to Vita Properties will be processed in accordance with the General Data Protection Regulation (GDPR). Your details may be retained for legitimate business purposes relating to property services. Full details of our Privacy Policy are available on request.

All rights reserved.