



Clifford Gardens  
KENSAL RISE, LONDON NW10

£1,600,000



Kate Brookfield x Vita Properties present this beautiful interior designed five bedroom family home in Kensal Rise, NW10.

Offering over 2100 sq ft of well designed space, every inch of this house offers a stylish and considered approach to interior design with sumptuous colour schemes, reclaimed period details and bespoke fittings.

Comprising a stunning double reception room, kitchen/dining room, garden studio, five double bedrooms, two bathrooms and scope to further extend into the side return.

Clifford Gardens is extremely well positioned for quick access to Chamberlayne Road and College Road, the two main destinations within Kensal Rise.











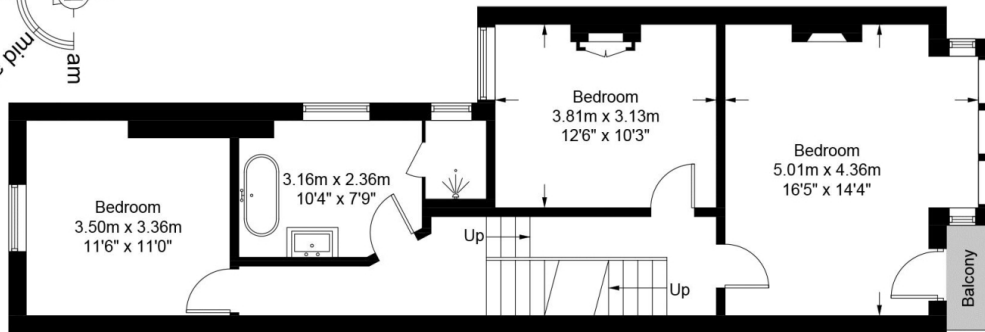
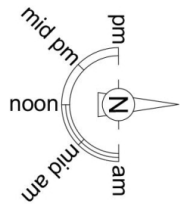
Scan for out video walkthrough



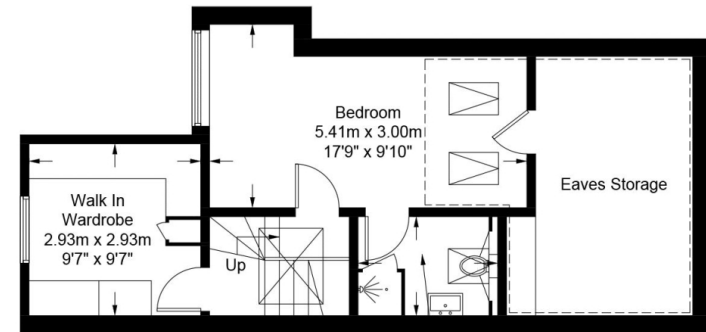
# Clifford Gardens, NW10

Approximate Gross Internal Area = 1931 sq ft / 179.4 sq m

Restricted Height = 204 sq ft / 19.4 sq m

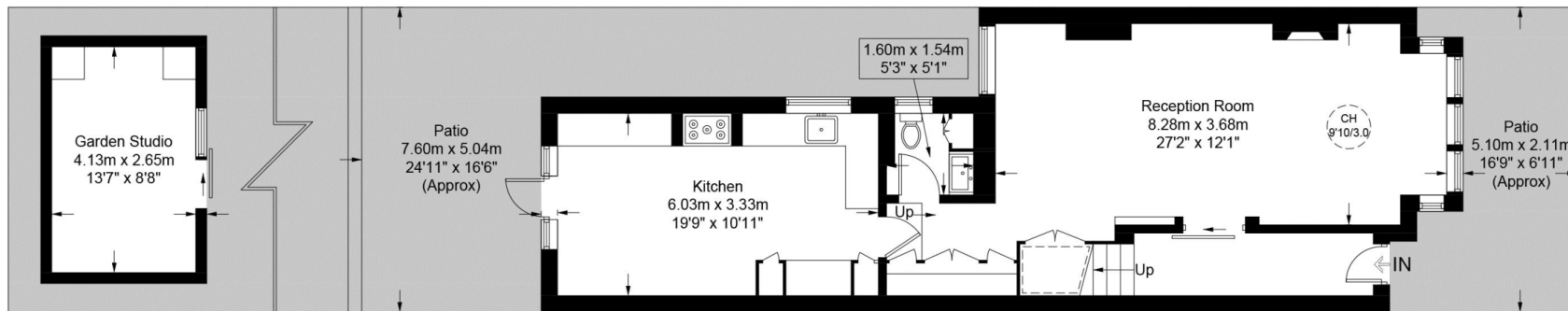


First Floor



Second Floor

= Reduced headroom below 1.5m / 5'0"



Ground Floor

This plan is for layout guidance only and is not drawn to scale unless stated. All dimensions, including windows, doors, and the Total Gross Internal Area (GIA), are approximate. For precise measurements, please consult a qualified architect or surveyor before making any decisions based on this plan.



# Particulars

## Property

Clifford Gardens, Kensal Rise, London NW10  
£1,600,000

## Rooms



2



2



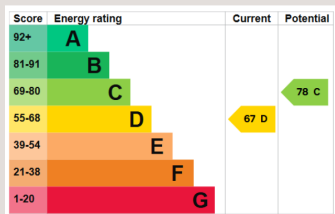
5

## Features

- Interior designed home
- Mid terrace Victorian freehold property
- Five bedrooms, two bathrooms
- Garden studio

## Information

Council Tax



Kate Brookfield

Kate.brookfield@vitaproperties.uk  
+4478 1365 5431



Scan for our website





T: +4420 7759 2199  
E: [enquiries@vitaproperties.uk](mailto:enquiries@vitaproperties.uk)

Disclaimer: These particulars are prepared as a general guide for prospective purchasers or tenants and do not constitute, nor constitute part of, an offer or contract. All statements, descriptions, and measurements contained herein are given in good faith and are believed to be correct at the time of printing, but any intending purchaser or tenant should not rely on them as statements or representations of fact and must satisfy themselves by inspection or otherwise as to their correctness. Floor plans and photographs are for illustrative purposes only and may not be to scale. The position and size of doors, windows, appliances, and other features are approximate. Anti-Money Laundering (AML): In line with the Money Laundering, Terrorist Financing and Transfer of Funds Regulations 2017, we are required to carry out customer due diligence checks. Buyers/tenants will be asked to provide proof of identity, address, and source of funds before a sale or rental can be agreed. Data Protection (GDPR): Personal information supplied to Vita Properties will be processed in accordance with the General Data Protection Regulation (GDPR). Your details may be retained for legitimate business purposes relating to property services. Full details of our Privacy Policy are available on request.

All rights reserved.