



Crossfield Road
BELSIZE PARK, LONDON NW3

£1,300,000



A meticulously refurbished 2/3-bedroom garden flat on Crossfield Road presents an exceptional standard of living in the heart of Belsize Park. Ideally situated near The Hall School, Belsize Village, England's Lane, and Swiss Cottage Station (Jubilee Line), this property seamlessly marries timeless period elegance with contemporary design.

Housed within an elegant period conversion, this garden flat has been thoughtfully upgraded to the highest standards. Upon entry, a spacious marble hallway welcomes you, featuring three custom-built, floor-to-ceiling storage units. The first serves as a dedicated space for coats and shoes, the second houses a washer and separate dryer, and the third functions as a highly practical food pantry. The entrance hall includes a guest WC and additional under-stair storage for convenience.

The principal bedroom is generously proportioned, offering bespoke floor-to-ceiling wardrobes, sleek wooden flooring, and a tranquil ambiance.

The family bathroom is finished to a superior specification, showcasing dual sinks, a large bathtub, and a walk-in shower, combining luxury with functionality. A second spacious double bedroom overlooks the private garden, providing a serene retreat with elegant wooden flooring.





At the core of this residence lies an expansive open-plan living area, thoughtfully designed to cater to modern living. The integrated kitchen boasts quartz countertops, premium Miele appliances, and a Quooker tap for instant boiling and filtered water. This living space transitions seamlessly into a stunning extension, featuring floor-to-ceiling glazing that floods the area with natural light—perfectly suited for both relaxation and entertaining.

Throughout the property, Farrow & Ball paintwork, curated by a professional color consultant, adds refined elegance. The high ceilings enhance the sense of space, further elevating the property's appeal.

The East facing 77ft private garden offers significant landscaping potential and includes a newly constructed summer house. This additional space features a fold-out super king-size bed, en-suite shower room, and a Harvia electrical stove sauna, making it an ideal guest suite or personal retreat. A separate storage shed provides further practicality.

With close proximity to Swiss Cottage Station (Jubilee Line) and Belsize Park Station (Northern Line), this property represents a rare opportunity to own a beautifully finished home in one of London's most prestigious neighbourhoods.







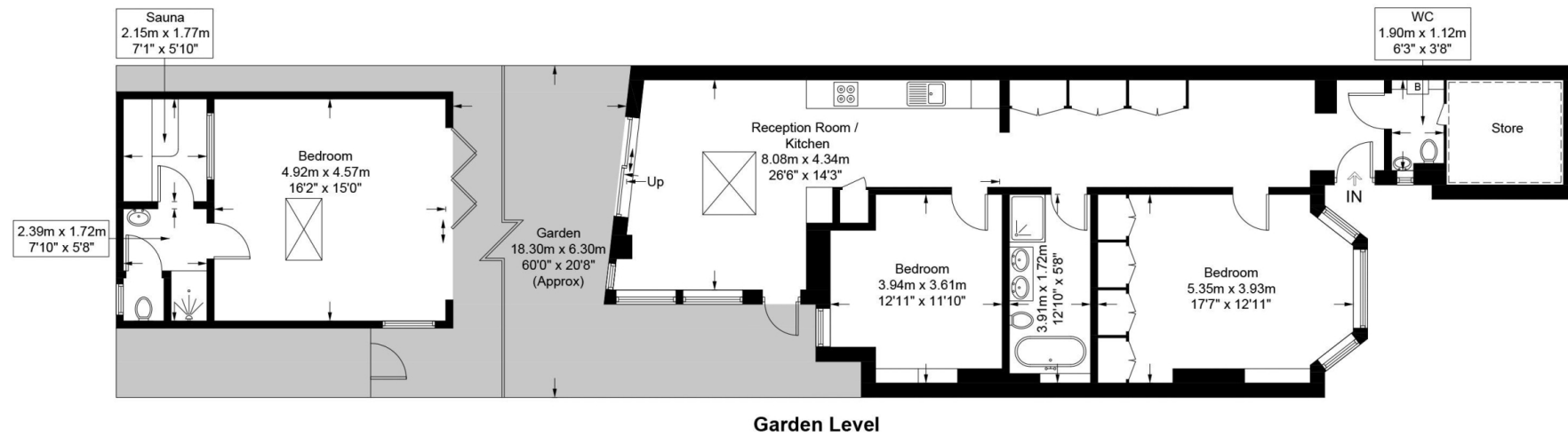
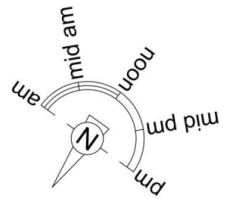


Crossfield Road, NW3

Approximate Gross Internal Area = 1360 sq ft / 126.4 sq m

Restricted Height = 58 sq ft / 5.4 sq m

Outbuilding = 338 sq ft / 31.4 sq m



This plan is for layout guidance only and is not drawn to scale unless stated. All dimensions, including windows, doors, and the Total Gross Internal Area (GIA), are approximate. For precise measurements, please consult a qualified architect or surveyor before making any decisions based on this plan.



Particulars

Property

Crossfield Road, Belsize Park, London NW3
£1,300,000

Rooms



1



2



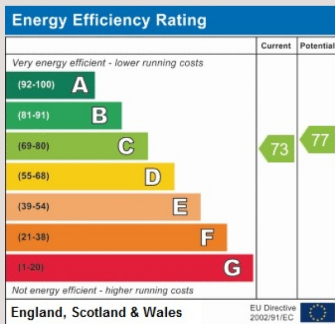
2

Features

- East Facing 77ft Private Garden
- Sauna
- Character Features
- Summer House

Information

Council Tax



Nouri Alexander

nouri.alexander@vitaproperties.uk
+4475 8405 1289



Scan for our website





T: +4420 7759 2199

E: enquiries@vitaproperties.uk

Disclaimer: These particulars are prepared as a general guide for prospective purchasers or tenants and do not constitute, nor constitute part of, an offer or contract. All statements, descriptions, and measurements contained herein are given in good faith and are believed to be correct at the time of printing, but any intending purchaser or tenant should not rely on them as statements or representations of fact and must satisfy themselves by inspection or otherwise as to their correctness. Floor plans and photographs are for illustrative purposes only and may not be to scale. The position and size of doors, windows, appliances, and other features are approximate. Anti-Money Laundering (AML): In line with the Money Laundering, Terrorist Financing and Transfer of Funds Regulations 2017, we are required to carry out customer due diligence checks. Buyers/tenants will be asked to provide proof of identity, address, and source of funds before a sale or rental can be agreed. Data Protection (GDPR): Personal information supplied to Vita Properties will be processed in accordance with the General Data Protection Regulation (GDPR). Your details may be retained for legitimate business purposes relating to property services. Full details of our Privacy Policy are available on request.

All rights reserved.