



Glenhurst Avenue
DARTMOUTH PARK, LONDON NW5

£2,175,000



Kate Brookfield x Vita Properties present this wonderful five bedroom family home, located within moments of Hampstead Heath.

Situated on Glenhurst Avenue, a quiet residential location in Dartmouth Park NW5 and within striking distance of the Heath, Parliament Fields and Swains Lane, this end of terrace house was fully renovated and extended in 2020 and offers in close to 2500 square foot of internal space.

Beautifully designed throughout, this home meets the needs of a modern family, with four en-suite bathrooms and an expansive open ground floor space, encompassing living areas, kitchen and dining space.

Two sets of sliding doors open fully to create a seamless extension to the garden area, further adding to this impressive entertaining space.





Kate Brookfield x Vita Properties present this wonderful five bedroom family home, located within moments of Hampstead Heath.

Situated on Glenhurst Avenue, a quiet residential location in Dartmouth Park NW5 and within striking distance of the Heath, Parliament Fields and Swains Lane, this end of terrace house was fully renovated and extended in 2020 and offers in close to 2500 square foot of internal space.

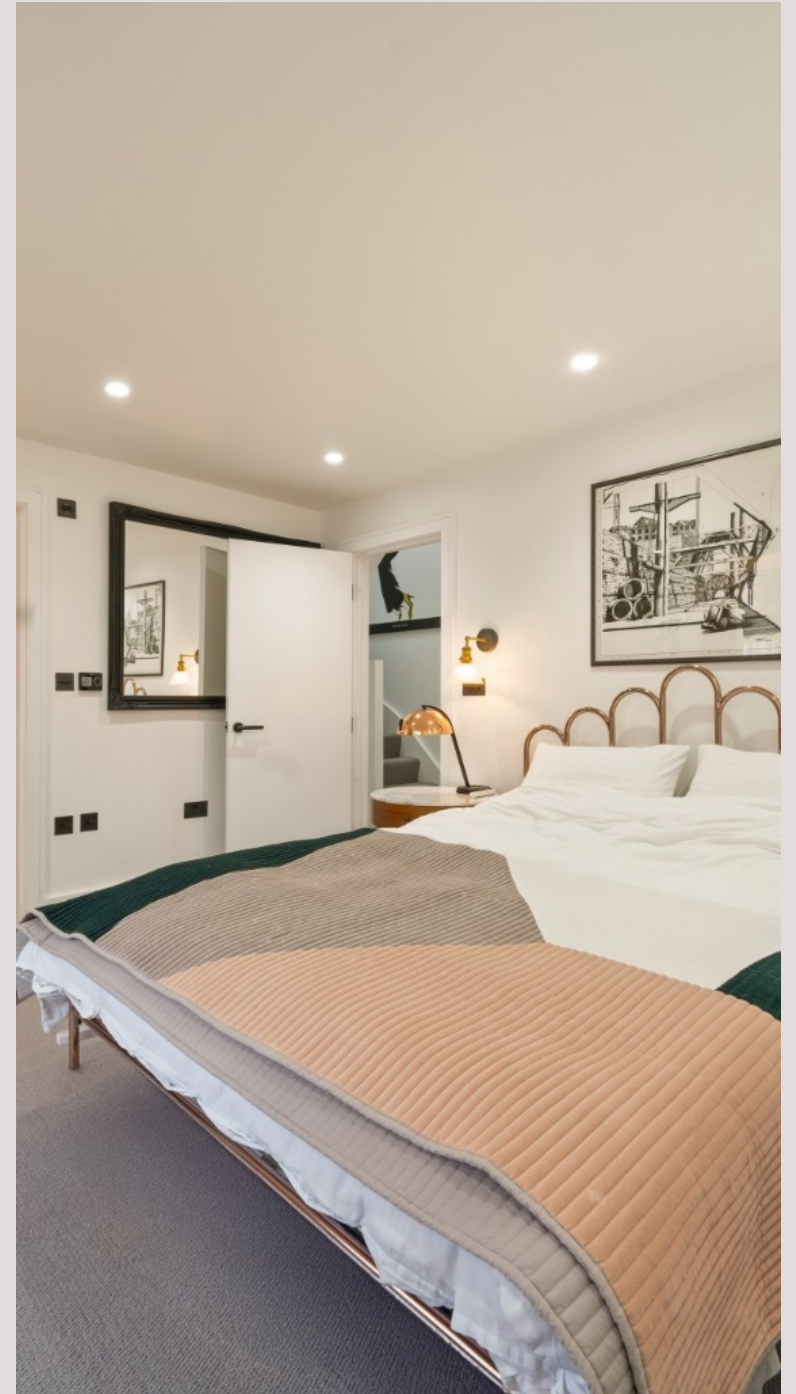
Beautifully designed throughout, this home meets the needs of a modern family, with four en-suite bathrooms and an expansive open ground floor space, encompassing living areas, kitchen and dining space.

Two sets of sliding doors open fully to create a seamless extension to the garden area, further adding to this impressive entertaining space.









Glenhurst Avenue, NW5

Approximate Gross Internal Area = 2473 sq ft / 229.8 sq m

Restricted Height = 230 sq ft / 21.4 sq m



This plan is for layout guidance only and is not drawn to scale unless stated. All dimensions, including windows, doors, and the Total Gross Internal Area (GIA), are approximate. For precise measurements, please consult a qualified architect or surveyor before making any decisions based on this plan.



Particulars

Property

Glenhurst Avenue, Dartmouth Park, London NW5
£2,175,000

Rooms



Information

Council Tax

Features

- Superb family house in highly desirable location, moments to Hampstead Heath
- Five bedrooms, four bathrooms
- Large open plan ground floor space
- Air conditioning, underfloor heating, Cat 6 cabling



Kate Brookfield

Kate.brookfield@vitaproperties.uk
+4478 1365 5431



Scan for our website





T: +4420 7759 2199
E: enquiries@vitaproperties.uk

Disclaimer: These particulars are prepared as a general guide for prospective purchasers or tenants and do not constitute, nor constitute part of, an offer or contract. All statements, descriptions, and measurements contained herein are given in good faith and are believed to be correct at the time of printing, but any intending purchaser or tenant should not rely on them as statements or representations of fact and must satisfy themselves by inspection or otherwise as to their correctness. Floor plans and photographs are for illustrative purposes only and may not be to scale. The position and size of doors, windows, appliances, and other features are approximate. Anti-Money Laundering (AML): In line with the Money Laundering, Terrorist Financing and Transfer of Funds Regulations 2017, we are required to carry out customer due diligence checks. Buyers/tenants will be asked to provide proof of identity, address, and source of funds before a sale or rental can be agreed. Data Protection (GDPR): Personal information supplied to Vita Properties will be processed in accordance with the General Data Protection Regulation (GDPR). Your details may be retained for legitimate business purposes relating to property services. Full details of our Privacy Policy are available on request.

All rights reserved.