



Riffel Road

WILLESDEN GREEN, LONDON NW2

£750,000



Kate Brookfield x Vita Properties present this beautiful, architecturally designed three bedroom apartment with a private terrace on Riffel Road, NW2.

With entrance at ground floor level, the home occupies the first and second floor of a mid terrace period property. Internally, a mix of period and contemporary details and excellent natural light. The focal point of this home being the incredible open plan kitchen/living room with stairs leading to the terrace and principle bedroom suite.

Contact Kate Brookfield (instagram @kate_the_agent)





Kate Brookfield x Vita Properties present this beautiful, architecturally designed three bedroom apartment with a private terrace on Riffel Road, NW2.

With entrance at ground floor level, the home occupies the first and second floor of a mid terrace period property. Internally, a mix of period and contemporary details and excellent natural light. The focal point of this home being the incredible open plan kitchen/living room with stairs leading to the terrace and principle bedroom suite.

Contact Kate Brookfield (instagram @kate_the_agent)









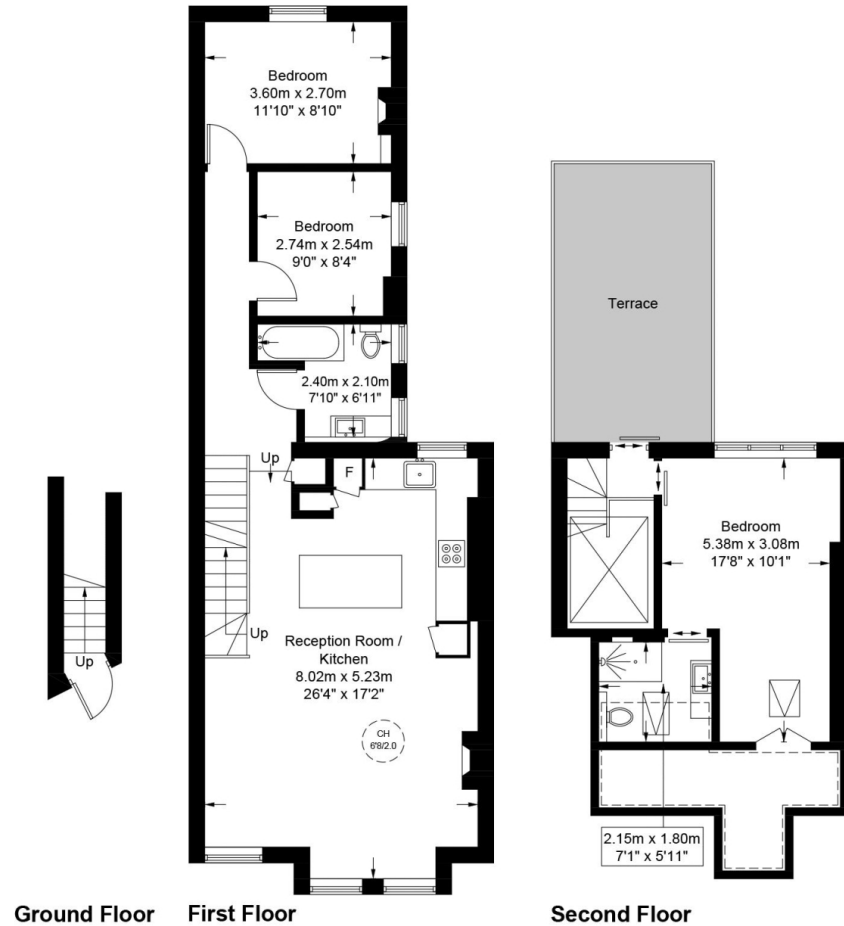
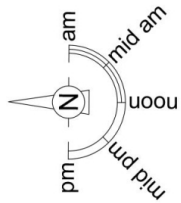
Scan for out video walkthrough



Riffel Road, NW2

Approximate Gross Internal Area = 1129 sq ft / 104.9 sq m

Restricted Height = 90.4 sq ft / 8.4 sq m



This plan is for layout guidance only and is not drawn to scale unless stated. All dimensions, including windows, doors, and the Total Gross Internal Area (GIA), are approximate. For precise measurements, please consult a qualified architect or surveyor before making any decisions based on this plan.



Particulars

Property

Riffel Road, Willesden Green, London NW2
£750,000

Rooms



1



2



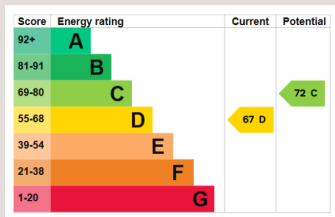
3

Features

- Architecturally designed 3 bedroom, 2 bathroom duplex
- Private terrace
- Period features
- Share of freehold

Information

Council Tax



Kate Brookfield

Kate.brookfield@vitaproperties.uk
+4478 1365 5431



Scan for our website





T: +4420 7759 2199

E: enquiries@vitaproperties.uk

Disclaimer: These particulars are prepared as a general guide for prospective purchasers or tenants and do not constitute, nor constitute part of, an offer or contract. All statements, descriptions, and measurements contained herein are given in good faith and are believed to be correct at the time of printing, but any intending purchaser or tenant should not rely on them as statements or representations of fact and must satisfy themselves by inspection or otherwise as to their correctness. Floor plans and photographs are for illustrative purposes only and may not be to scale. The position and size of doors, windows, appliances, and other features are approximate. Anti-Money Laundering (AML): In line with the Money Laundering, Terrorist Financing and Transfer of Funds Regulations 2017, we are required to carry out customer due diligence checks. Buyers/tenants will be asked to provide proof of identity, address, and source of funds before a sale or rental can be agreed. Data Protection (GDPR): Personal information supplied to Vita Properties will be processed in accordance with the General Data Protection Regulation (GDPR). Your details may be retained for legitimate business purposes relating to property services. Full details of our Privacy Policy are available on request.

All rights reserved.