



Palace Court

FINCHLEY ROAD, HAMPSTEAD, LONDON NW3

£1,000,000



IN NEED OF REFURBISHMENT

We are delighted to offer this spacious unmodernised apartment on the 3RD floor of a fine and well maintained mansion block of only 17 flats. Palace Court occupies a prominent position on the corner of Finchley Road and Frognal Lane. Spanning over 2,000 sq ft, this family sized apartment with flexible accommodation.

Located in a convenient position, Palace Court is close to shops, schools and transport amenities of Finchley Road, West Hampstead and Hampstead Village. Finchley Road Station (Jubilee & Metropolitan Lines), Finchley & Frognal Overground Rail Station, West Hampstead Thames Link as well as Hampstead Station (Northern Line) are all within walking distance









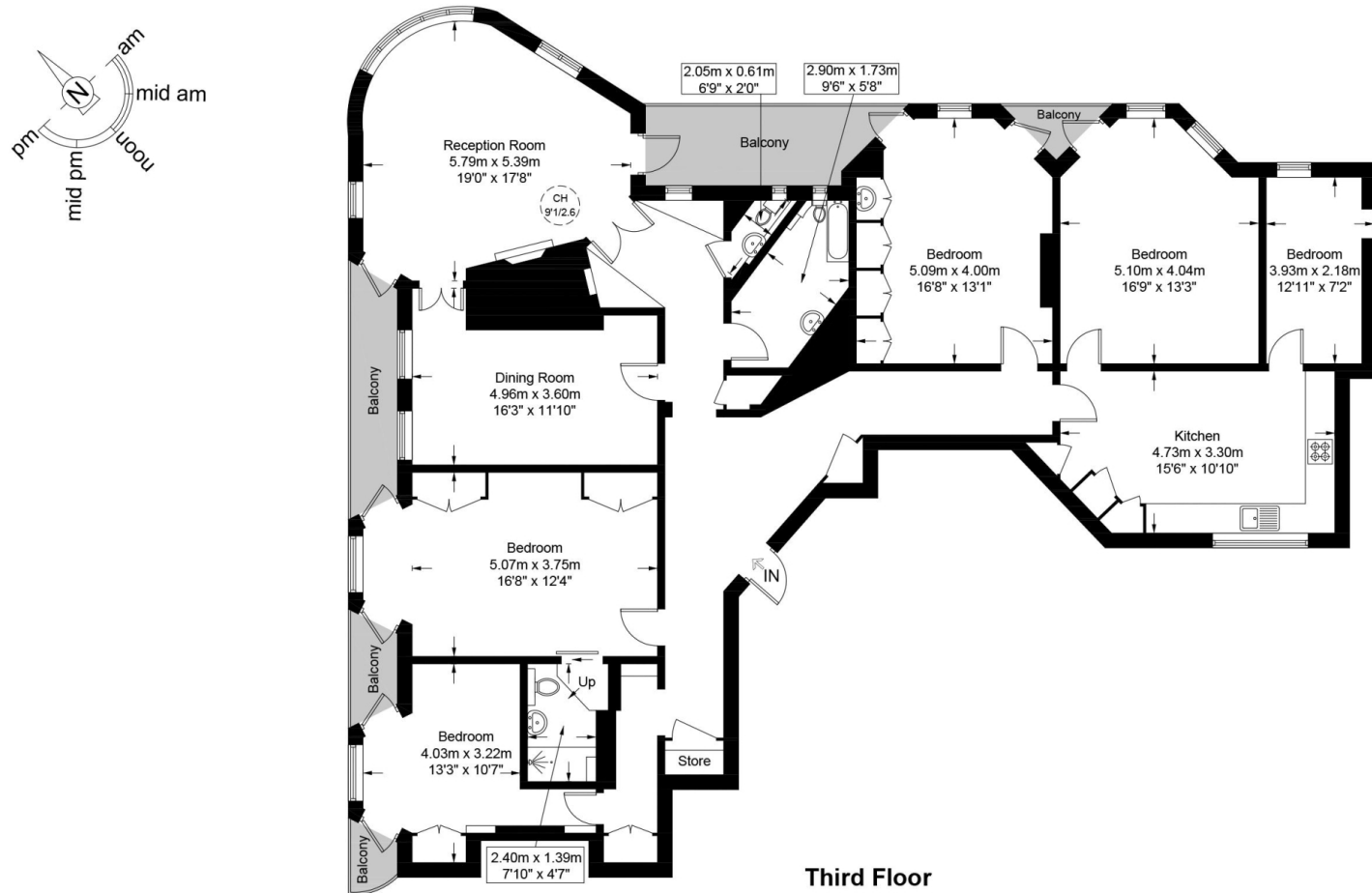


Scan for out video walkthrough



Palace Court, NW3

Approximate Gross Internal Area = 2081 sq ft / 193.3 sq m



This plan is for layout guidance only and is not drawn to scale unless stated. All dimensions, including windows, doors, and the Total Gross Internal Area (GIA), are approximate. For precise measurements, please consult a qualified architect or surveyor before making any decisions based on this plan.



Particulars

Property

Palace Court, Finchley Road, Hampstead, London NW3
£1,000,000

Rooms



2



3



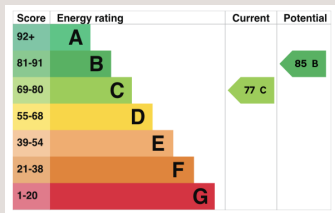
4

Features

- IN NEED OF REFURBISHMENT
- Over 2000 sq ft
- Balconies
- Lift

Information

Council Tax



Oliver Kent

oliver.kent@vitaproperties.uk
+4477 7274 0351



Scan for our website





T: +4420 7759 2199
E: enquiries@vitaproperties.uk

Disclaimer: These particulars are prepared as a general guide for prospective purchasers or tenants and do not constitute, nor constitute part of, an offer or contract. All statements, descriptions, and measurements contained herein are given in good faith and are believed to be correct at the time of printing, but any intending purchaser or tenant should not rely on them as statements or representations of fact and must satisfy themselves by inspection or otherwise as to their correctness. Floor plans and photographs are for illustrative purposes only and may not be to scale. The position and size of doors, windows, appliances, and other features are approximate. Anti-Money Laundering (AML): In line with the Money Laundering, Terrorist Financing and Transfer of Funds Regulations 2017, we are required to carry out customer due diligence checks. Buyers/tenants will be asked to provide proof of identity, address, and source of funds before a sale or rental can be agreed. Data Protection (GDPR): Personal information supplied to Vita Properties will be processed in accordance with the General Data Protection Regulation (GDPR). Your details may be retained for legitimate business purposes relating to property services. Full details of our Privacy Policy are available on request.

All rights reserved.