



Acol Road

SOUTH HAMPSTEAD LONDON NW6

£2,500



Kate Brookfield x Vita Properties present this light and spacious two-bedroom apartment for rent in South Hampstead, NW6.

Found on the second floor (top floor) of a handsome Victorian residence, the apartment offers generous size rooms, with extremely good natural light and excellent fitted storage. A large hallway area set with a floor to ceiling window leads to all other rooms. The bedrooms are arranged to the rear of the home, both with fitted wardrobes. A fully tiled bathroom is elevated slightly higher with a couple of small steps up, and the wonderful open plan living space, with neatly arranged kitchen slightly set back is the perfect size to relax or entertain.





Acol Road is one of the charming tree-lined roads within the South Hampstead conservation area. Known for its beautiful architecture and convenient position for transport links, the area is a desirable location for those wishing for quick access to central London and the amenities of West Hampstead, Finchley Road and St John's Wood. Local transport links include West Hampstead (Jubilee Line zone 2), West Hampstead Thameslink and Overground, Finchley Road (Jubilee and Metropolitan lines zone 2) and Kilburn Park (Bakerloo Line zone 2).



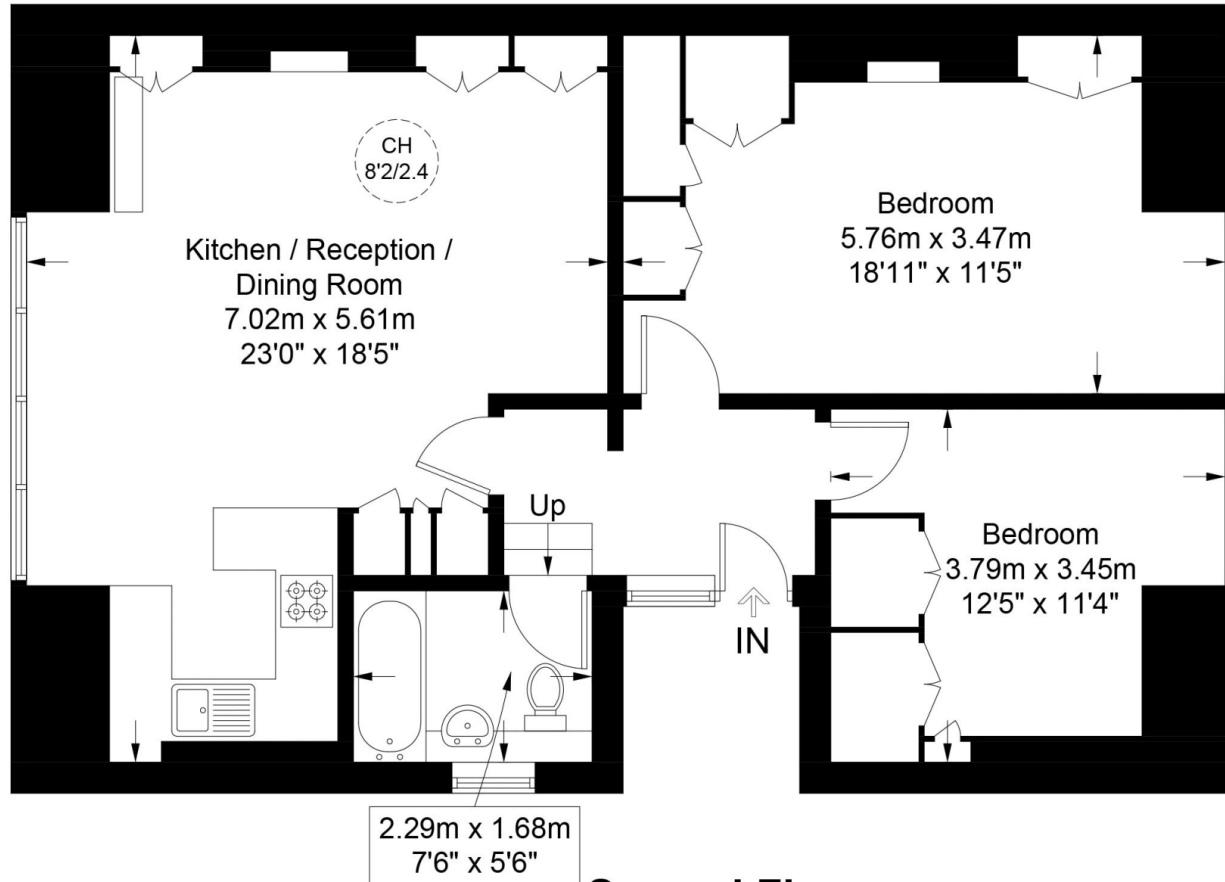
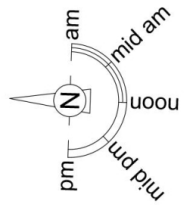




Acol Road, NW6

Approximate Gross Internal Area = 768 sq ft / 71.4 sq m

Restricted Height = 4 sq ft / 0.4 sq m



Second Floor

This plan is for layout guidance only and is not drawn to scale unless stated. All dimensions, including windows, doors, and the Total Gross Internal Area (GIA), are approximate. For precise measurements, please consult a qualified architect or surveyor before making any decisions based on this plan.



Certified
Property
Measurer

Particulars

Property

Acol Road, South Hampstead London NW6
£2,500

Rooms



1



1



2

Features

- Spacious 2 bedroom apartment
- Desirable South Hampstead conservation area
- 2nd floor (top floor)
- Newly decorated

Information

Council Tax

Score	Energy rating	Current	Potential
92+	A		
81-91	B		
69-80	C		
55-68	D	55 D	57 D
39-54	E		
21-38	F		
1-20	G		



Kate Brookfield

Kate.brookfield@vitaproperties.uk
+4478 1365 5431



Scan for our website





T: +4420 7759 2199
E: enquiries@vitaproperties.uk

Disclaimer: These particulars are prepared as a general guide for prospective purchasers or tenants and do not constitute, nor constitute part of, an offer or contract. All statements, descriptions, and measurements contained herein are given in good faith and are believed to be correct at the time of printing, but any intending purchaser or tenant should not rely on them as statements or representations of fact and must satisfy themselves by inspection or otherwise as to their correctness. Floor plans and photographs are for illustrative purposes only and may not be to scale. The position and size of doors, windows, appliances, and other features are approximate. Anti-Money Laundering (AML): In line with the Money Laundering, Terrorist Financing and Transfer of Funds Regulations 2017, we are required to carry out customer due diligence checks. Buyers/tenants will be asked to provide proof of identity, address, and source of funds before a sale or rental can be agreed. Data Protection (GDPR): Personal information supplied to Vita Properties will be processed in accordance with the General Data Protection Regulation (GDPR). Your details may be retained for legitimate business purposes relating to property services. Full details of our Privacy Policy are available on request.

All rights reserved.