



## Mondrian House

KIDDERPORE AVENUE, LONDON NW3

£575,000



A beautifully created one bedroom apartment offering 670sq ft with an amazing circa 42ft Balcony found on the first floor of Mondrian House, recently built forming part of the luxurious development, with substantial landscaped communal gardens, lift and concierge.

The apartment features an excellent 19ft reception room (View over the communal gardens) with modern open plan kitchen with an array of units, large utility room, double bedroom with fitted wardrobes and door leading out to balcony, bathroom with vanity unit, large storage room.

Hampstead village & West Hampstead's cafés and restaurants are a short distance along with the open spaces and outdoor activities of Hampstead Heath.

There are plenty of transport links to include bus routes, Underground station (Jubilee, Metropolitan Lines, London Overground).

(Secure parking by separate Negotiations).





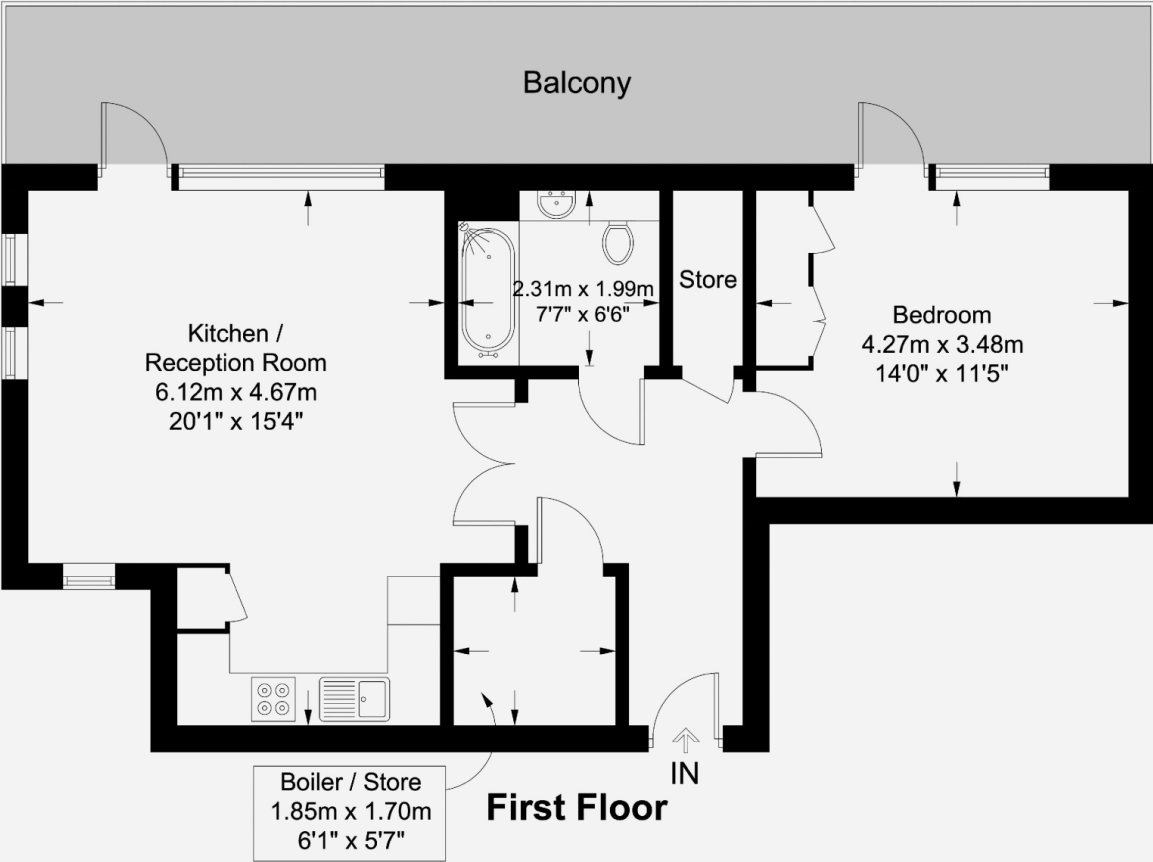
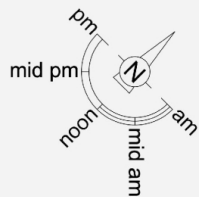






**Mondrian House, NW3**

**Approximate Gross Internal Area = 670 sq ft / 62.3 sq m**



This plan is for layout guidance only and is not drawn to scale unless stated. All dimensions, including windows, doors, and the Total Gross Internal Area (GIA), are approximate. For precise measurements, please consult a qualified architect or surveyor before making any decisions based on this plan.



# Particulars

## Property

Mondrian House, Kidderpore Avenue, London NW3  
£575,000

## Rooms



## Features

- New Build With Porter
- Spacious Hallway With Ample Storage
- Large Double Bedroom With Fitted Wardrobes "Balcony"
- Beautiful Kitchen With Integrated Appliances

## Information

Council Tax

Score	Energy rating	Current	Potential
92+	A		
81-91	B	83 B	83 B
69-80	C		
55-68	D		
39-54	E		
21-38	F		
1-20	G		



Scan for our website





T: +4420 7759 2199

E: [enquiries@vitaproperties.uk](mailto:enquiries@vitaproperties.uk)

Disclaimer: These particulars are prepared as a general guide for prospective purchasers or tenants and do not constitute, nor constitute part of, an offer or contract. All statements, descriptions, and measurements contained herein are given in good faith and are believed to be correct at the time of printing, but any intending purchaser or tenant should not rely on them as statements or representations of fact and must satisfy themselves by inspection or otherwise as to their correctness. Floor plans and photographs are for illustrative purposes only and may not be to scale. The position and size of doors, windows, appliances, and other features are approximate. Anti-Money Laundering (AML): In line with the Money Laundering, Terrorist Financing and Transfer of Funds Regulations 2017, we are required to carry out customer due diligence checks. Buyers/tenants will be asked to provide proof of identity, address, and source of funds before a sale or rental can be agreed. Data Protection (GDPR): Personal information supplied to Vita Properties will be processed in accordance with the General Data Protection Regulation (GDPR). Your details may be retained for legitimate business purposes relating to property services. Full details of our Privacy Policy are available on request.

All rights reserved.