



Liddell Gardens
KENSAL RISE, LONDON NW10
£1,700,000

Kate Brookfield x Vita Properties offer this extremely beautiful family home, located within the heart of Kensal Rise, NW10.

Interior designed, this beautifully curated home offers bright, spacious rooms and period details which complement the classic finishes and Farrow & Ball colour scheme. From the curb, the private driveway leads you towards the smart facade. A wide entrance hall offers you a glimpse of the magical rear garden and provides plenty of practical space for everyday items. The stained glass windows above the door and porch sprinkle coloured light into the area and the oak flooring underfoot runs seamlessly through to the living spaces. The guest bathroom is neatly situated with William Morris wallpaper and a combination of Burlington and Leroy Brooks fittings.

Moving into the bright and welcoming living space, the tall bay window is set with shutters and a Stove wood burner sits within the fireplace. A timber glazed screen with French doors divides the living area to the kitchen, allowing for a full and uninterrupted line of sight to the garden. Large slate tiles run the full length of this space and The Shaker Kitchen Co. kitchen is complete with a generous island with bespoke oak top and seating for at least four people. A well-designed utility room is set to the side and shelving is





The garden offers privacy and very well zoned areas with two patios and space for children's play area, plus outside seating and dining. Looking back towards the house, grape vines have been trained to arch the full width of the rear of the ground floor extension further grounding this house and its appealing 'classic country home' interiors and charm.

On the first floor of the house, three bedrooms and a family bathroom. The upper floor hosts the generous principal bedroom with excellent fitted storage and en suite bathroom.

Liddell Gardens sits in a prime position in Kensal Rise. Situated between the two main destinations, Chamberlayne Road and College Road, the area offers an abundance of convenience and lifestyle alongside excellent transport and desirable local schools.









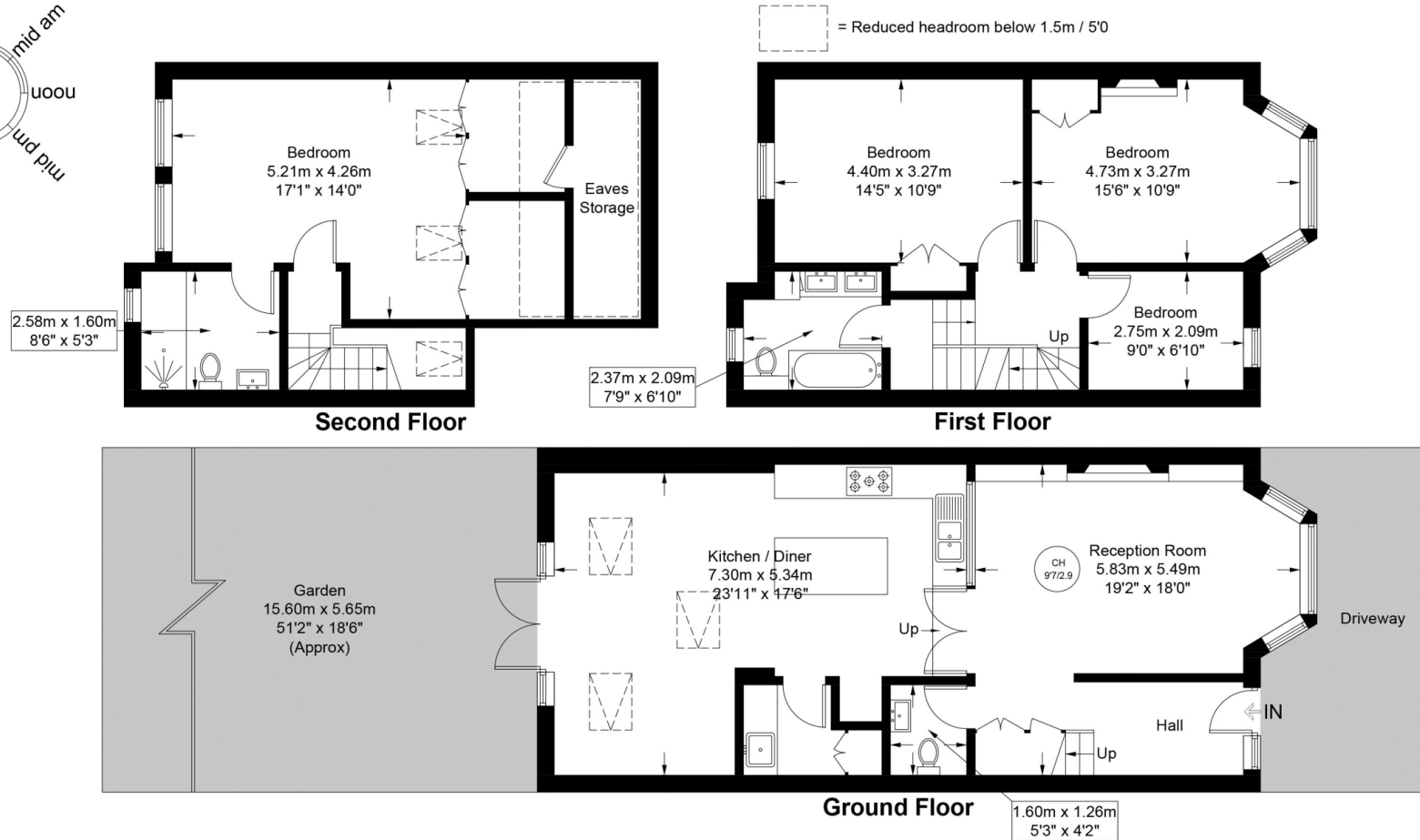
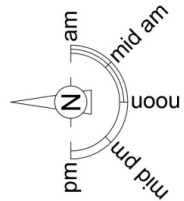
Scan for out video walkthrough



Liddell Gardens, NW10

Approximate Gross Internal Area = 1730 sq ft / 160.7 sq m

Restricted Height = 98 sq ft / 9.1 sq m



This plan is for layout guidance only and is not drawn to scale unless stated. All dimensions, including windows, doors, and the Total Gross Internal Area (GIA), are approximate. For precise measurements, please consult a qualified architect or surveyor before making any decisions based on this plan.



Particulars

Property

Liddell Gardens, Kensal Rise, London NW10
£1,700,000

Rooms



2



3



4

Features

- Beautiful interior designed house
- Private driveway
- Desirable position in Kensal Rise
- 4 bedrooms, 2 bathrooms

Information

Council Tax

Score	Energy rating	Current	Potential
92+	A		
81-91	B		
69-80	C	70 C	80 C
55-68	D		
39-54	E		
21-38	F		
1-20	G		



Kate Brookfield

Kate.brookfield@vitaproperties.uk
+4478 1365 5431



Scan for our website





T: +4420 7759 2199
E: enquiries@vitaproperties.uk

Disclaimer: These particulars are prepared as a general guide for prospective purchasers or tenants and do not constitute, nor constitute part of, an offer or contract. All statements, descriptions, and measurements contained herein are given in good faith and are believed to be correct at the time of printing, but any intending purchaser or tenant should not rely on them as statements or representations of fact and must satisfy themselves by inspection or otherwise as to their correctness. Floor plans and photographs are for illustrative purposes only and may not be to scale. The position and size of doors, windows, appliances, and other features are approximate. Anti-Money Laundering (AML): In line with the Money Laundering, Terrorist Financing and Transfer of Funds Regulations 2017, we are required to carry out customer due diligence checks. Buyers/tenants will be asked to provide proof of identity, address, and source of funds before a sale or rental can be agreed. Data Protection (GDPR): Personal information supplied to Vita Properties will be processed in accordance with the General Data Protection Regulation (GDPR). Your details may be retained for legitimate business purposes relating to property services. Full details of our Privacy Policy are available on request.

All rights reserved.