



Marlborough Mansions

CANNON HILL, WEST HAMPSTEAD, LONDON NW6

£1,500,000



MARLBOROUGH
MANSIONS

Vita Properties are delighted to offer this beautifully presented, characterful, 4 bed apartment boasting many charming original features, such as light-enhancing bay windows and two original feature fireplaces.

The property is spaced over an impressive 1900 sq ft (APPROX) and comprises of 3 double bedrooms & 1 single/study, separate sitting and dining rooms, 2 bathrooms, bright kitchen/breakfast room with adjoining utility room, guest WC, communal gardens and onsite management company.

This fabulous property situated within the sought-after BAM Estate is conveniently located in the heart of West Hampstead.

Well located within a short walk to a large selection of boutique shops, restaurants and excellent public transport links from West Hampstead tube station (Jubilee Line) & West Hampstead (Thames Link & Overground)





Vita Properties are delighted to offer this beautifully presented, characterful, 4 bed apartment boasting many charming original features, such as light-enhancing bay windows and two original feature fireplaces.

The property is spaced over an impressive 1900 sq ft (APPROX) and comprises of 3 double bedrooms & 1 single/study, separate sitting and dining rooms, 2 bathrooms, bright kitchen/breakfast room with adjoining utility room, guest WC, communal gardens and onsite management company.

This fabulous property situated within the sought-after BAM Estate is conveniently located in the heart of West Hampstead.

Well located within a short walk to a large selection of boutique shops, restaurants and excellent public transport links from West Hampstead tube station (Jubilee Line) & West Hampstead (Thames Link & Overground)









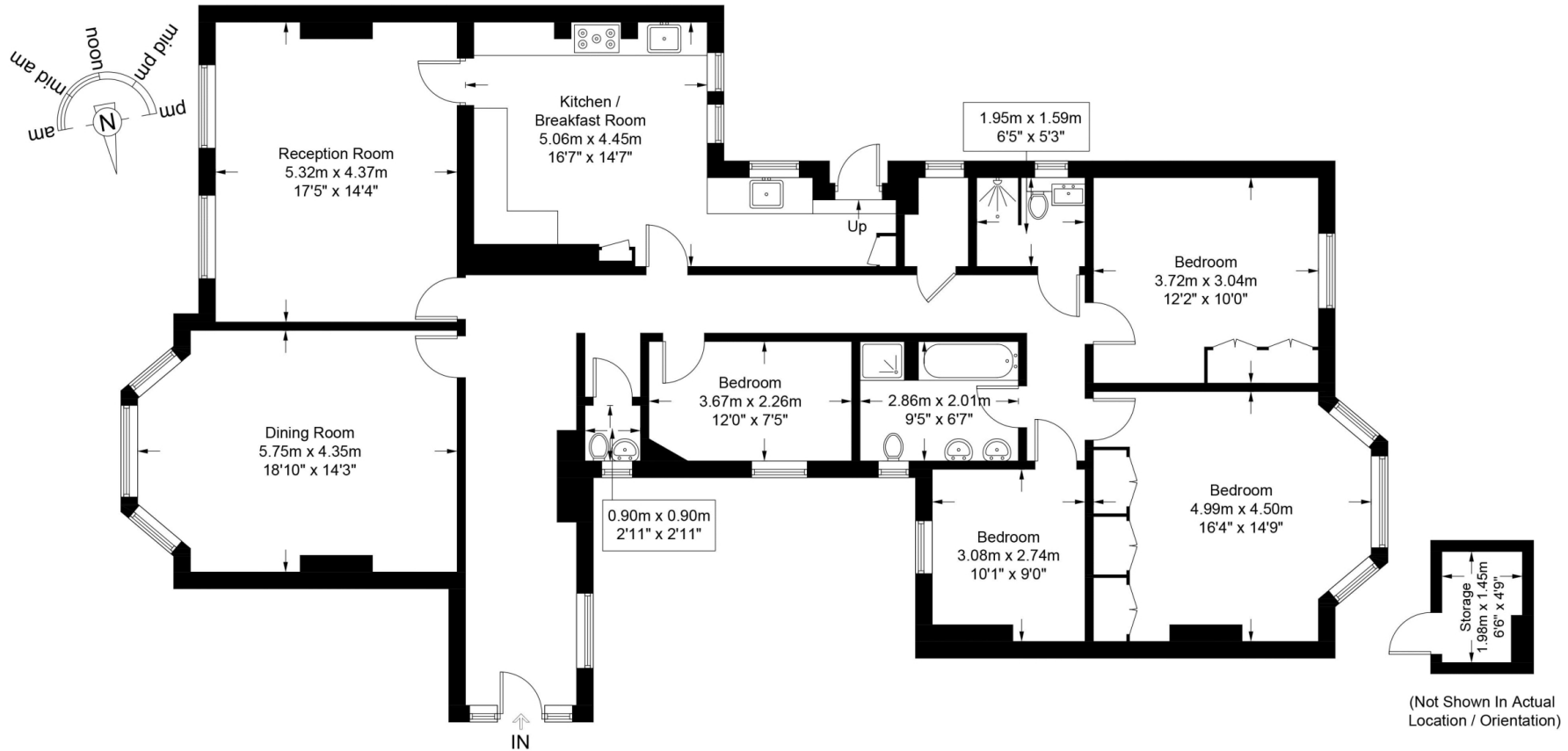
Scan for out video walkthrough



Marlborough Mansions, NW6

Approximate Gross Internal Area = 1893 sq ft / 175.9 sq m

Storage = 31 sq ft / 2.9 sq m



Lower Ground Floor

This plan is for layout guidance only and is not drawn to scale unless stated. All dimensions, including windows, doors, and the Total Gross Internal Area (GIA), are approximate. For precise measurements, please consult a qualified architect or surveyor before making any decisions based on this plan.



Particulars

Property

Marlborough Mansions, Cannon Hill, West Hampstead,
£6500r0006

Rooms



2



2



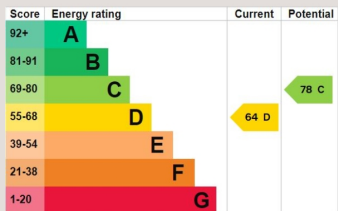
4

Features

- Direct Access to Garden
- Parquet Wooden Floors
- Eat in Kitchen
- Large Communal Gardens

Information

Council Tax



Jonathan Singer

jonathan.singer@vitaproperties.uk
+4478 8428 6414



Scan for our website





T: +4420 7759 2199

E: enquiries@vitaproperties.uk

Disclaimer: These particulars are prepared as a general guide for prospective purchasers or tenants and do not constitute, nor constitute part of, an offer or contract. All statements, descriptions, and measurements contained herein are given in good faith and are believed to be correct at the time of printing, but any intending purchaser or tenant should not rely on them as statements or representations of fact and must satisfy themselves by inspection or otherwise as to their correctness. Floor plans and photographs are for illustrative purposes only and may not be to scale. The position and size of doors, windows, appliances, and other features are approximate. Anti-Money Laundering (AML): In line with the Money Laundering, Terrorist Financing and Transfer of Funds Regulations 2017, we are required to carry out customer due diligence checks. Buyers/tenants will be asked to provide proof of identity, address, and source of funds before a sale or rental can be agreed. Data Protection (GDPR): Personal information supplied to Vita Properties will be processed in accordance with the General Data Protection Regulation (GDPR). Your details may be retained for legitimate business purposes relating to property services. Full details of our Privacy Policy are available on request.

All rights reserved.