



Cricklewood Lane

LONDON NW2

£1,075,000



Introducing an impressive period five-bedroom house in Cricklewood, NW2, offering exceptional living accommodation and a blend of modern amenities with original charm.

The hallway retains much of its original charm with wood flooring and a pretty wooden staircase.

The ground floor includes a guest WC, two reception rooms and utility room.

The 21ft fitted kitchen flows into the second reception room and has bi-fold doors and skylights to flood the room with light and makes a great all year entertainment space leading to a 64ft secluded garden.

The garden boasts two patio areas, an apple tree, and mature shrubs and flowers, with side access for convenience.

Upstairs, the principal bedroom offers a vast range of floor-to-ceiling fitted wardrobes, complimented by four additional bedrooms and two bathrooms.

Cricklewood Lane is situated moments away from local cafes, restaurants, and the transport links of Cricklewood Thameslink.





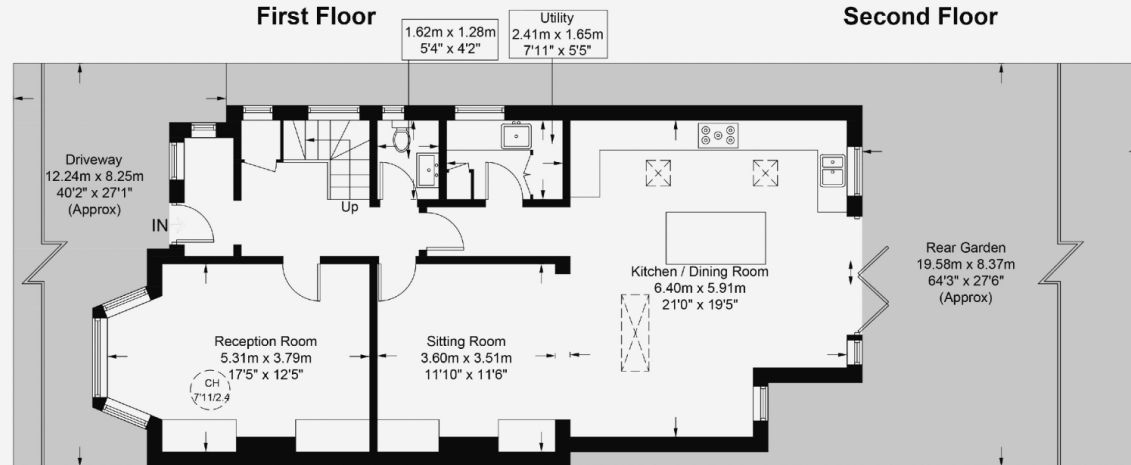
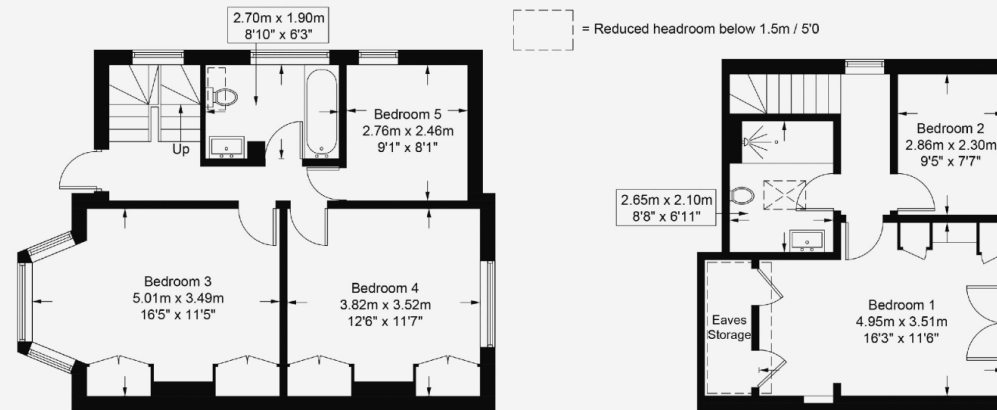
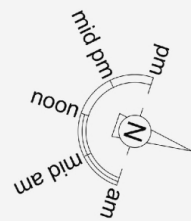




# Cricklewood Lane, NW2

Approximate Gross Internal Area = 1943 sq ft / 180.5 sq m

Restricted Height = 44 sq ft / 4.1 sq m



Ground Floor

This plan is for layout guidance only and is not drawn to scale unless stated. All dimensions, including windows, doors, and the Total Gross Internal Area (GIA), are approximate. For precise measurements, please consult a qualified architect or surveyor before making any decisions based on this plan.



# Particulars

## Property

Cricklewood Lane, London NW2  
£1,075,000

## Rooms



2



2



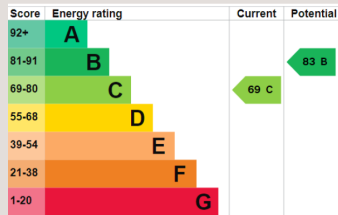
5

## Features

- Large Garden
- Stunning Receptions
- Guest WC
- Moments to Gym, Transport and Shops

## Information

Council Tax



Jonathan Singer

jonathan.singer@vitaproperties.uk  
+4478 8428 6414



Scan for our website





T: +4420 7759 2199

E: [enquiries@vitaproperties.uk](mailto:enquiries@vitaproperties.uk)

Disclaimer: These particulars are prepared as a general guide for prospective purchasers or tenants and do not constitute, nor constitute part of, an offer or contract. All statements, descriptions, and measurements contained herein are given in good faith and are believed to be correct at the time of printing, but any intending purchaser or tenant should not rely on them as statements or representations of fact and must satisfy themselves by inspection or otherwise as to their correctness. Floor plans and photographs are for illustrative purposes only and may not be to scale. The position and size of doors, windows, appliances, and other features are approximate. Anti-Money Laundering (AML): In line with the Money Laundering, Terrorist Financing and Transfer of Funds Regulations 2017, we are required to carry out customer due diligence checks. Buyers/tenants will be asked to provide proof of identity, address, and source of funds before a sale or rental can be agreed. Data Protection (GDPR): Personal information supplied to Vita Properties will be processed in accordance with the General Data Protection Regulation (GDPR). Your details may be retained for legitimate business purposes relating to property services. Full details of our Privacy Policy are available on request.

All rights reserved.