



Harvist Road
QUEENS PARK, LONDON NW6
£553



Kate Brookfield x Vita Properties present this brand newly renovated 2 bedroom, 2 bathroom apartment in the heart of Kensal Rise, NW10

Standing as 1 of 3 new apartments within a fully renovated mid terrace period property, the apartments offer professional tenants an opportunity to rent immaculate, never before lived in homes, located within moments of the wonderful amenities of Chamberlayne Road, Salusbury Road and the beautiful Queens Park open space.

Accommodation comprises a neatly arranged open plan kitchen/living space with high ceilings wooden floors and large windows dressed with full height shutters, principal bedroom with en suite shower room, further generous double bedroom and full bathroom





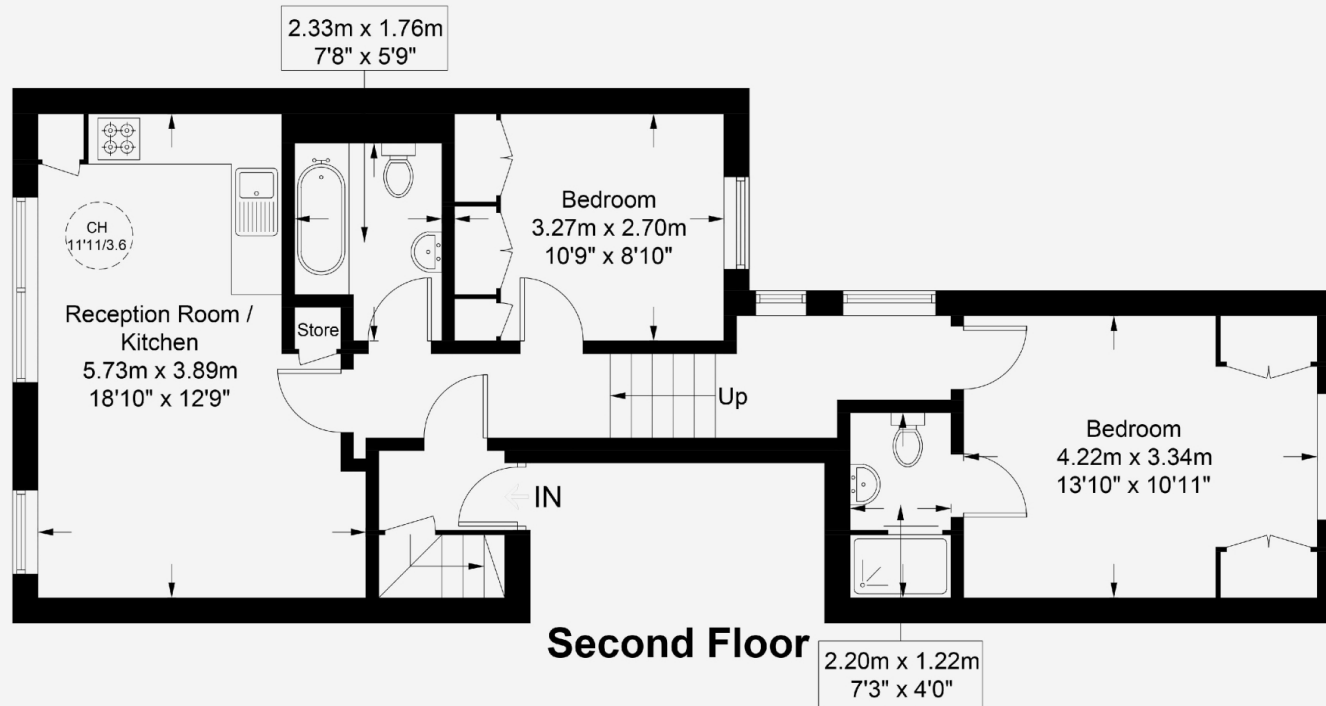
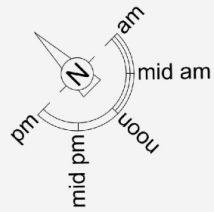






Harvist Road, NW6

Approximate Gross Internal Area = 676 sq ft / 62.8 sq m



This plan is for layout guidance only and is not drawn to scale unless stated. All dimensions, including windows, doors, and the Total Gross Internal Area (GIA), are approximate. For precise measurements, please consult a qualified architect or surveyor before making any decisions based on this plan.



Particulars

Property

Harvist Road, Queens Park, London NW6
£553

Rooms



1



2



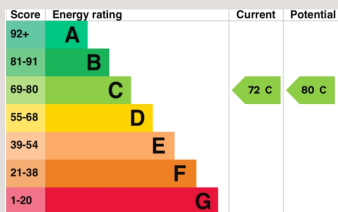
2

Features

- Brand new home
- Newly renovated period building
- 2 bedrooms, 2 bathrooms
- Moments to Chamberlayne Road and Queens Park

Information

Council Tax



Oliver Kent

oliver.kent@vitaproperties.uk
+4477 7274 0351



Scan for our website





T: +4420 7759 2199
E: enquiries@vitaproperties.uk

Disclaimer: These particulars are prepared as a general guide for prospective purchasers or tenants and do not constitute, nor constitute part of, an offer or contract. All statements, descriptions, and measurements contained herein are given in good faith and are believed to be correct at the time of printing, but any intending purchaser or tenant should not rely on them as statements or representations of fact and must satisfy themselves by inspection or otherwise as to their correctness. Floor plans and photographs are for illustrative purposes only and may not be to scale. The position and size of doors, windows, appliances, and other features are approximate. Anti-Money Laundering (AML): In line with the Money Laundering, Terrorist Financing and Transfer of Funds Regulations 2017, we are required to carry out customer due diligence checks. Buyers/tenants will be asked to provide proof of identity, address, and source of funds before a sale or rental can be agreed. Data Protection (GDPR): Personal information supplied to Vita Properties will be processed in accordance with the General Data Protection Regulation (GDPR). Your details may be retained for legitimate business purposes relating to property services. Full details of our Privacy Policy are available on request.

All rights reserved.