



Heath Drive

HAMPSTEAD, LONDON NW3

£5,599



Available from July 17th, 2024, this contemporary abode sits nestled on a charming tree-lined avenue in the heart of Hampstead, conveniently close to St. Margaret's Preparatory School for effortless school drop-offs. Hampstead Village, with its array of amenities, is a mere half-mile stroll away.

Spanning over 2000 sq ft over the top two floors of a period residence, this chic apartment boasts three bedrooms, three bathrooms, and a coveted terrace for outdoor relaxation. No expense has been spared in its meticulous refurbishment 7 years ago by the owner, ensuring both style and functionality throughout.







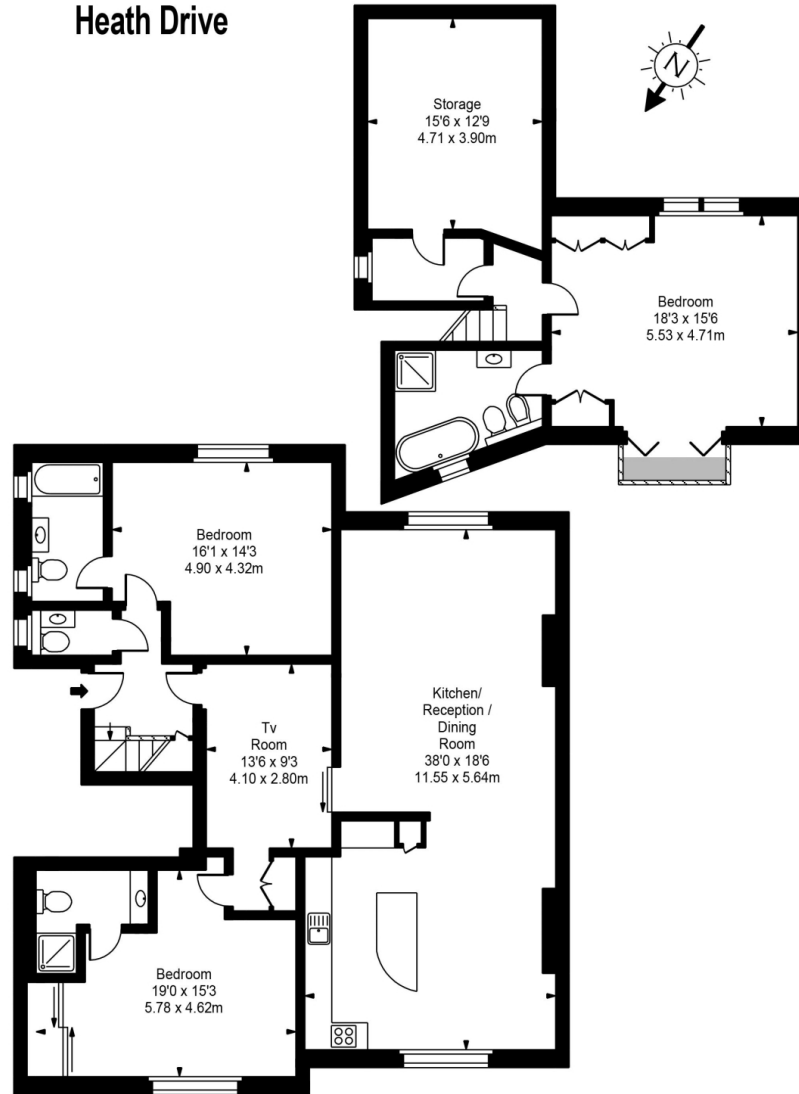




Scan for out video walkthrough



Heath Drive



Approx Gross Internal Area 2122 Sq Ft - 197.12 Sq M

FOR ILLUSTRATIVE PURPOSES ONLY. NOT TO SCALE.

Whilst every attempt has been made to ensure the accuracy of the floorplan shown, all measurements, positioning, fixtures, fittings and any other data shown are an approximate interpretation for illustrative purposes only and are not to scale. No responsibility is taken for any error, omission, mis-statement or use of data shown. Floor plan by www.bestangle.co.uk

Particulars

Property

Heath Drive, Hampstead, London NW3
£5,599

Rooms



1



3



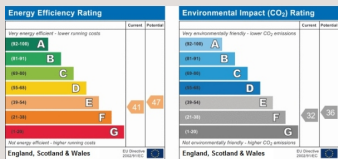
3

Features

- Spacious Reception
- Three Bed, Three Bath
- Generous Room Proportions
- Seconds to Hampstead Heath

Information

Council Tax



Oliver Kent

oliver.kent@vitaproperties.uk
+4477 7274 0351



Scan for our website





T: +4420 7759 2199
E: enquiries@vitaproperties.uk

Disclaimer: These particulars are prepared as a general guide for prospective purchasers or tenants and do not constitute, nor constitute part of, an offer or contract. All statements, descriptions, and measurements contained herein are given in good faith and are believed to be correct at the time of printing, but any intending purchaser or tenant should not rely on them as statements or representations of fact and must satisfy themselves by inspection or otherwise as to their correctness. Floor plans and photographs are for illustrative purposes only and may not be to scale. The position and size of doors, windows, appliances, and other features are approximate. Anti-Money Laundering (AML): In line with the Money Laundering, Terrorist Financing and Transfer of Funds Regulations 2017, we are required to carry out customer due diligence checks. Buyers/tenants will be asked to provide proof of identity, address, and source of funds before a sale or rental can be agreed. Data Protection (GDPR): Personal information supplied to Vita Properties will be processed in accordance with the General Data Protection Regulation (GDPR). Your details may be retained for legitimate business purposes relating to property services. Full details of our Privacy Policy are available on request.

All rights reserved.