



Holland Road

KENSAL RISE, LONDON NW10

£550,000



Kate Brookfield x Vita Properties present a wonderfully spacious 2 bedroom apartment in a desirable position in Kensal Rise, NW10.

With uninterrupted views directly onto the Elmwood Lawn Tennis Club, this light filled 1st floor home offers 748 sq ft of immaculately presented space and is the ideal home for any buyer wishing to take advantage of the many wonderful amenities in Kensal Rise.

Set within a beautiful Edwardian mid terrace property, the apartment boasts original features and high ceilings alongside a contemporary renovation by the current owners.

A spacious open plan kitchen/living space is found to the front with large bay window with green views over the tennis club, bespoke shelving, original fireplace and wooden floors.

The kitchen sits neatly to one side of the room, arranged in a 'U' shape with dropped pendant lights above a good size dining area.

The principal bedroom is of a generous size and is found at the rear of the apartment with a feature fireplace and a full bank of floor to ceiling fitted storage, and the second double bedroom and full bathroom are arranged in between these spaces.





The home also benefits from a good size entrance hall allowing for storage of coats and day to day items.

The property is located at the southern section of Holland Road, a highly desirable position within close proximity to College Road, ultra cool destination with its cafes, restaurants, delis, galleries, boutiques and the famous Kensal Store and The Island pub.

The Elmwood Lawn and Tennis club is a firm favourite for local residents with its well maintained courts and friendly club house, and King Edward VII park is also within short walking distance, as well as multiple transport connections and desirable local primary schools.





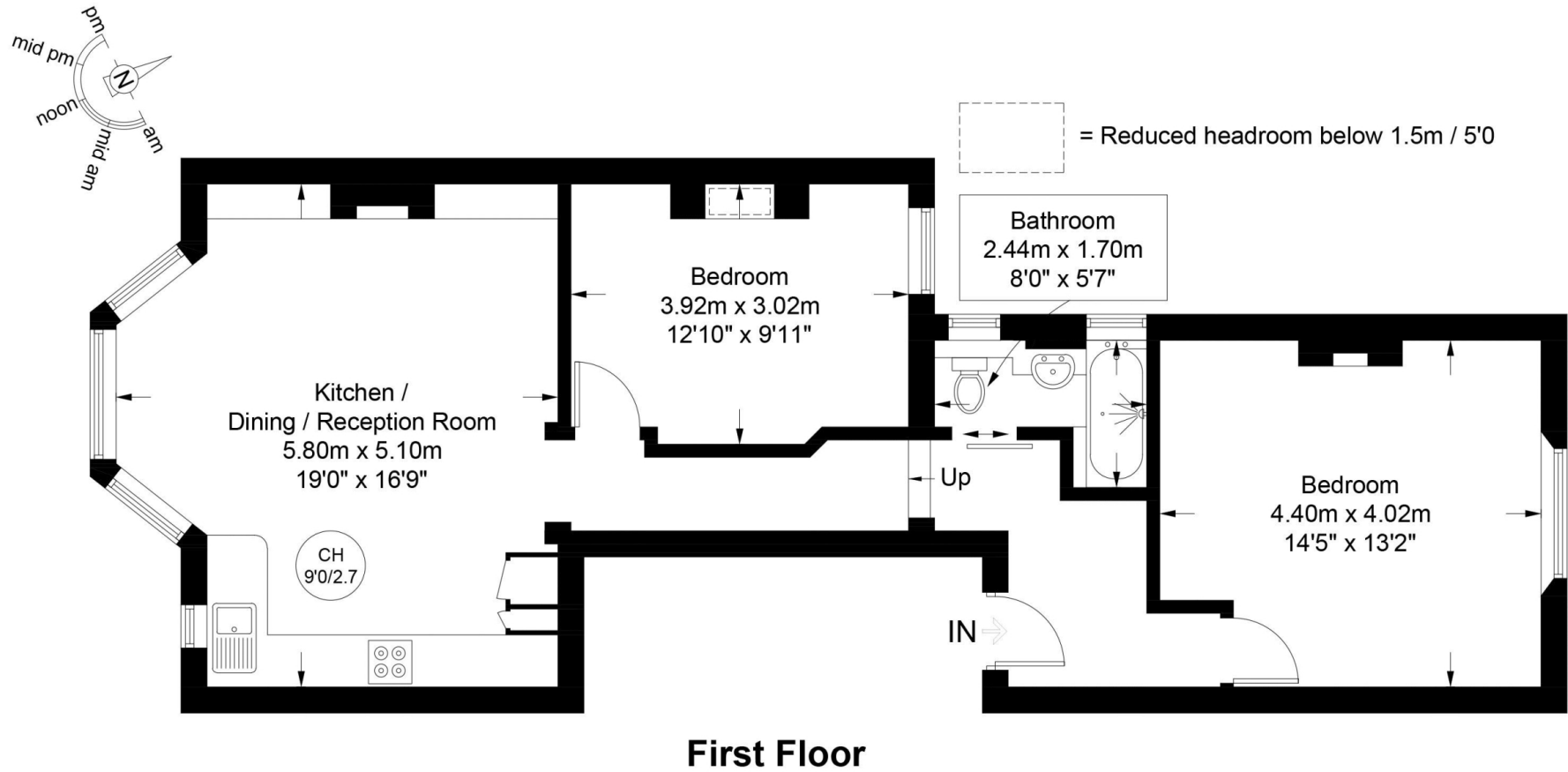




Holland Road, NW10

Approximate Gross Internal Area = 748 sq ft / 69.5 sq m

Restricted Height = 3 sq ft / 0.3 sq m



This plan is for layout guidance only and is not drawn to scale unless stated. All dimensions, including windows, doors, and the Total Gross Internal Area (GIA), are approximate. For precise measurements, please consult a qualified architect or surveyor before making any decisions based on this plan.



Particulars

Property

Holland Road, Kensal Rise, London NW10
£550,000

Rooms



1



1



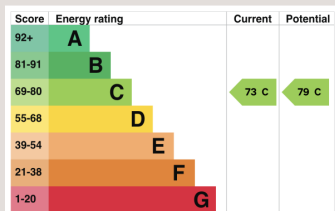
2

Features

- Large 2 bedroom apartment
- Share of freehold
- Direct views onto the Elmwood Lawn Tennis Club
- Very close to College Road

Information

Council Tax



Kate Brookfield

Kate.brookfield@vitaproperties.uk
+4478 1365 5431



Scan for our website





T: +4420 7759 2199

E: enquiries@vitaproperties.uk

Disclaimer: These particulars are prepared as a general guide for prospective purchasers or tenants and do not constitute, nor constitute part of, an offer or contract. All statements, descriptions, and measurements contained herein are given in good faith and are believed to be correct at the time of printing, but any intending purchaser or tenant should not rely on them as statements or representations of fact and must satisfy themselves by inspection or otherwise as to their correctness. Floor plans and photographs are for illustrative purposes only and may not be to scale. The position and size of doors, windows, appliances, and other features are approximate. Anti-Money Laundering (AML): In line with the Money Laundering, Terrorist Financing and Transfer of Funds Regulations 2017, we are required to carry out customer due diligence checks. Buyers/tenants will be asked to provide proof of identity, address, and source of funds before a sale or rental can be agreed. Data Protection (GDPR): Personal information supplied to Vita Properties will be processed in accordance with the General Data Protection Regulation (GDPR). Your details may be retained for legitimate business purposes relating to property services. Full details of our Privacy Policy are available on request.

All rights reserved.