



## Avenue Mansions

FINCHLEY ROAD, HAMPSTEAD, LONDON NW3

£1,500,000



Step into this spacious four bedroom apartment set in a prestigious Mansion Block (BAM Estate). The property offers 1958sq ft of lateral living space with high ceilings that enhance the sense of openness and airiness. As you enter, you'll be greeted by two generously proportioned reception rooms, retaining charming original features that exude a timeless appeal. The modern kitchen/breakfast room is designed for both style and functionality, featuring contemporary fittings and plenty of storage space. Adjacent to the kitchen, a convenient utility room adds practicality to everyday living. Further benefit from modern bathrooms, a beautifully maintained landscaped communal gardens and a first class portorage/management service.





The development is within walking distance to West Hampstead that offers a variety of popular shops, restaurants and coffee bars.

Transportation links include West Hampstead tube station (Jubilee Line) and West Hampstead (ThamesLink).

Hampstead & Finchley Road transport links are also a short walk away.

Viewings are highly recommended.







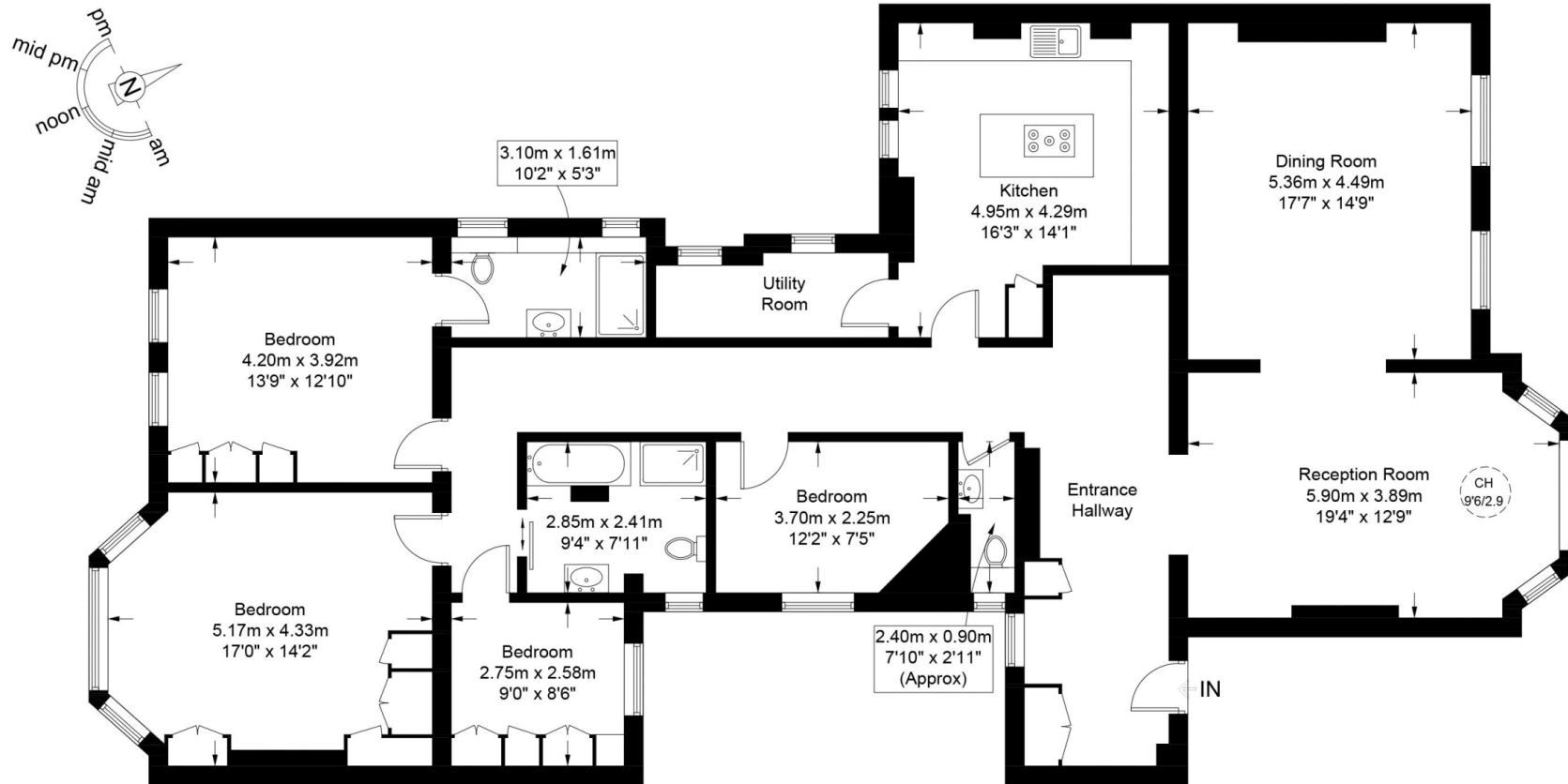


Scan for out video walkthrough



# Avenue Mansions, NW3

Approximate Gross Internal Area = 1958 sq ft / 181.9 sq m



Upper Ground Floor

This plan is for layout guidance only and is not drawn to scale unless stated. All dimensions, including windows, doors, and the Total Gross Internal Area (GIA), are approximate. For precise measurements, please consult a qualified architect or surveyor before making any decisions based on this plan.



# Particulars

## Property

Avenue Mansions, Finchley Road, Hampstead, London NW3  
£1,500,000

## Rooms



2



2



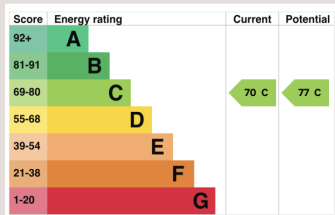
4

## Features

- Communal Gardens
- Underground Storage
- On Site Management
- Over 1900 sq ft

## Information

Council Tax



Jonathan Singer

jonathan.singer@vitaproperties.uk  
+4478 8428 6414



Scan for our website





T: +4420 7759 2199

E: [enquiries@vitaproperties.uk](mailto:enquiries@vitaproperties.uk)

Disclaimer: These particulars are prepared as a general guide for prospective purchasers or tenants and do not constitute, nor constitute part of, an offer or contract. All statements, descriptions, and measurements contained herein are given in good faith and are believed to be correct at the time of printing, but any intending purchaser or tenant should not rely on them as statements or representations of fact and must satisfy themselves by inspection or otherwise as to their correctness. Floor plans and photographs are for illustrative purposes only and may not be to scale. The position and size of doors, windows, appliances, and other features are approximate. Anti-Money Laundering (AML): In line with the Money Laundering, Terrorist Financing and Transfer of Funds Regulations 2017, we are required to carry out customer due diligence checks. Buyers/tenants will be asked to provide proof of identity, address, and source of funds before a sale or rental can be agreed. Data Protection (GDPR): Personal information supplied to Vita Properties will be processed in accordance with the General Data Protection Regulation (GDPR). Your details may be retained for legitimate business purposes relating to property services. Full details of our Privacy Policy are available on request.

All rights reserved.