



## Spezia Road

KENSAL RISE, LONDON NW10

£1,200,000



Kate Brookfield x Vita Properties present a fully modernised and extended, end-of terrace Victorian house in Kensal Green, NW10

This charming and beautifully designed freehold home commands the prime position on this incredibly pretty road, nestled away in Kensal Green. Spanning in excess of 2300sq ft, natural light and high ceilings are a continuing feature of this house, with emphasis on large entertaining spaces on the ground level. The focal point of this exceptional property is a the rear extended 42' kitchen/family space with exposed steels and multiple sky lights leading to the 34' south west facing garden.

Further features include a 26' double reception room with doors to an internal courtyard, 5 large double bedrooms, 4 bathrooms (3 en suite), dedicated utility room and guest WC.

A prime property in Kensal Rise, Northwest London, near shops, cafes, and excellent transport links for easy access to central London.











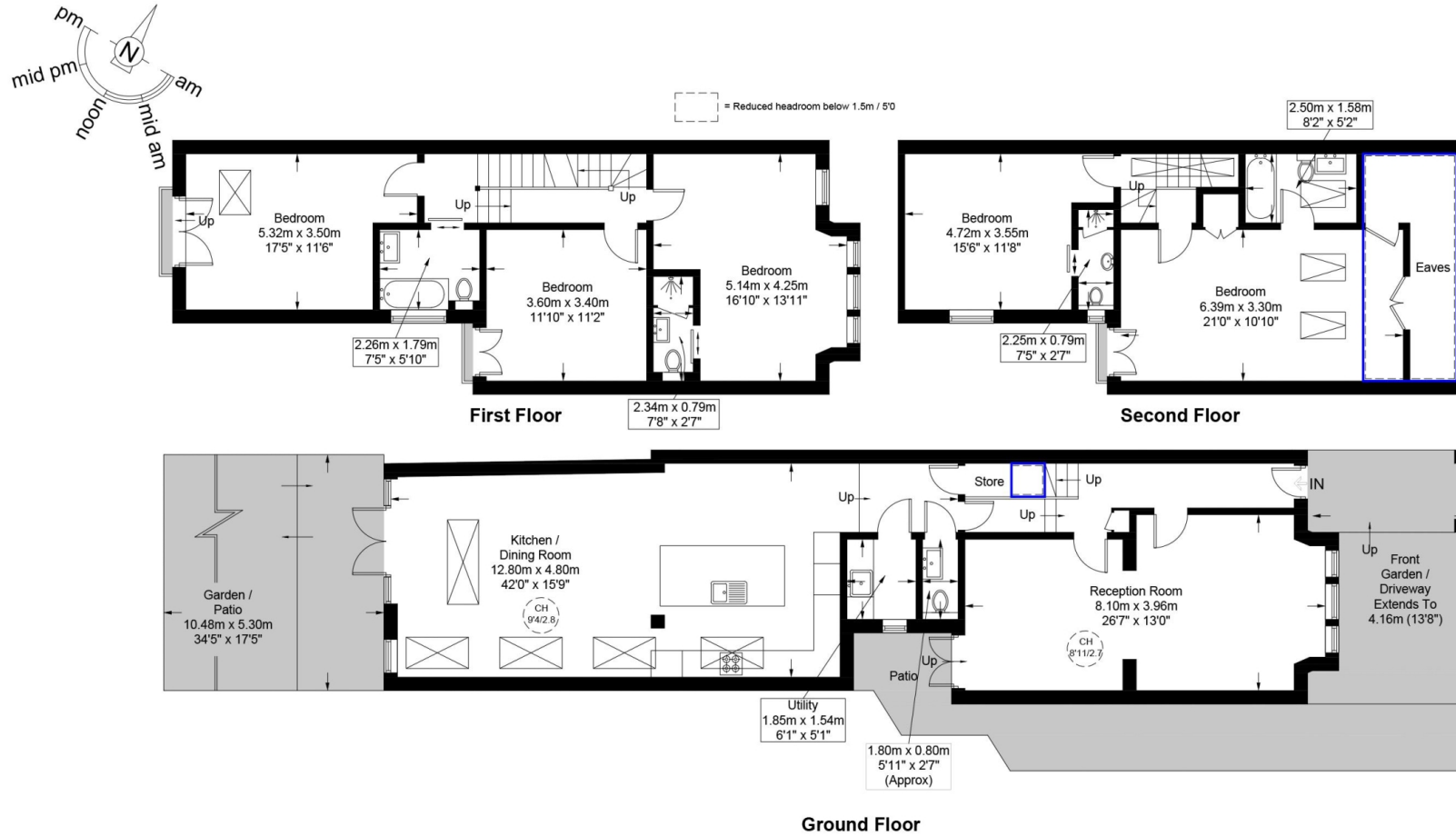
Scan for out video walkthrough



# Spezia Road, NW10

Approximate Gross Internal Area = 2320 sq ft / 215.5 sq m

Restricted Height = 122 sq ft / 11.3 sq m



This plan is for layout guidance only and is not drawn to scale unless stated. All dimensions, including windows, doors, and the Total Gross Internal Area (GIA), are approximate. For precise measurements, please consult a qualified architect or surveyor before making any decisions based on this plan.



# Particulars

## Property

Spezia Road, Kensal Rise, London NW10  
£1,200,000

## Rooms



2



4



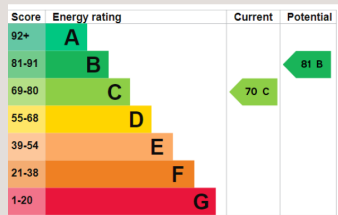
5

## Features

- End of terrace Victorian house
- Brand newly renovated and extended
- South west facing garden
- 5 bedrooms, 4 bathrooms

## Information

Council Tax



Kate Brookfield

Kate.brookfield@vitaproperties.uk  
+4478 1365 5431



Scan for our website





T: +4420 7759 2199

E: [enquiries@vitaproperties.uk](mailto:enquiries@vitaproperties.uk)

Disclaimer: These particulars are prepared as a general guide for prospective purchasers or tenants and do not constitute, nor constitute part of, an offer or contract. All statements, descriptions, and measurements contained herein are given in good faith and are believed to be correct at the time of printing, but any intending purchaser or tenant should not rely on them as statements or representations of fact and must satisfy themselves by inspection or otherwise as to their correctness. Floor plans and photographs are for illustrative purposes only and may not be to scale. The position and size of doors, windows, appliances, and other features are approximate. Anti-Money Laundering (AML): In line with the Money Laundering, Terrorist Financing and Transfer of Funds Regulations 2017, we are required to carry out customer due diligence checks. Buyers/tenants will be asked to provide proof of identity, address, and source of funds before a sale or rental can be agreed. Data Protection (GDPR): Personal information supplied to Vita Properties will be processed in accordance with the General Data Protection Regulation (GDPR). Your details may be retained for legitimate business purposes relating to property services. Full details of our Privacy Policy are available on request.

All rights reserved.