



Marylebone Square
MOXON STREET, LONDON W1U

£5,165,000



Marylebone Square is a stunning new development located in the heart of Marylebone Village.

This spacious and stunning 3 Bedroom Apartment with a balcony offers circa 1377 Sq Ft in the first New Build development in Marylebone in the last ten years.

Marylebone Square has been designed by Simon Bowden Architecture and with interiors by LIV Interiors.

The centrepiece of the building is an open courtyard with an expansive glass roof, filling the area with daylight, while open sides bring in fresh air.

In keeping with its naturalistic quality, the courtyard is filled with plants and a water feature, instilling a sense of Feng Shui and wellbeing.

Access to the apartments is by individual bridges and walkways, making it an open yet intimate entrance space.





Floor to ceiling windows and glass sliding doors invite an influx of natural light.

Marylebone Square provides easy access to Paddington, Marylebone and Baker Street Stations, or Bond Street Underground where the Elizabeth Line will connect you to Heathrow Airport or Paris via the Eurostar.

For entertainment, hail a cab to the Royal Opera House and London's West End, or take a stroll to Selfridges.

For weekend walks and relaxing summer evenings, Marylebone Square is equidistant between two of London's Royal Parks, Regents Park and Hyde Park.

Marylebone Square comes with a 10 year build warranty by NHBC.

All measurements are approximate and photographs provided for guidance only.





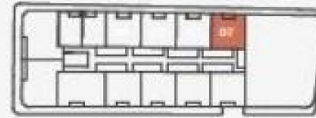




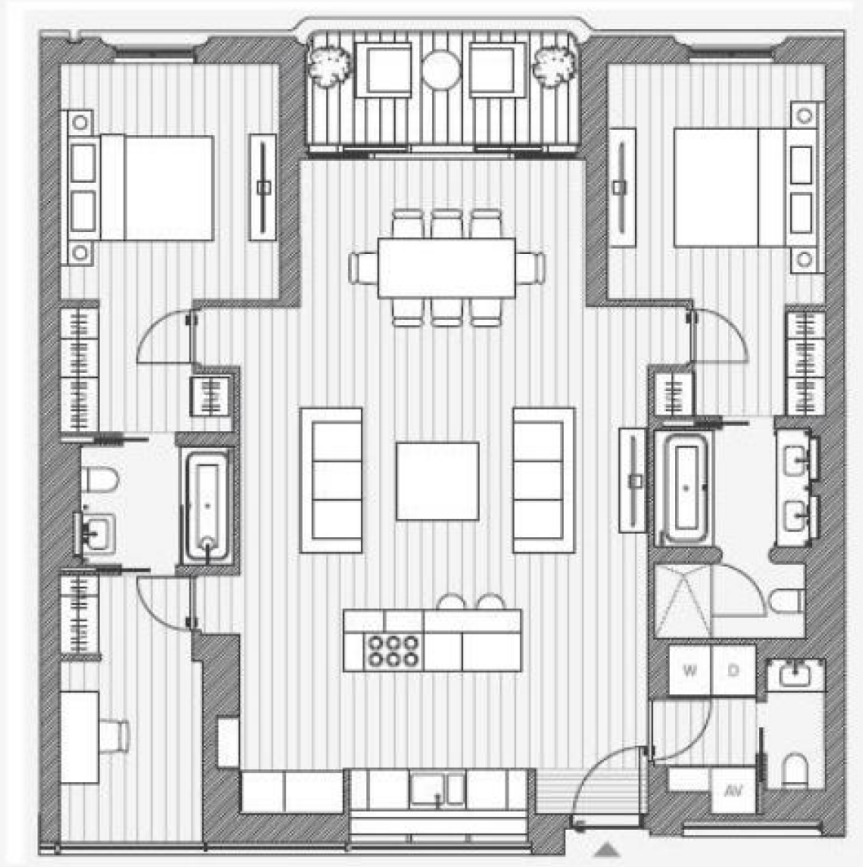
2 Bedroom Apartment & Study Mirrored



Floors 1, 2 & 3



Living/Kitchen/dining	6.3m x 10.0m
Master bedroom	3.3m x 3.9m
Master bathroom	2.4m x 3.2m
Bedroom 2	3.3m x 3.9m
Ensuite 2	2.3m x 1.8m
Study	2.1m x 3.9m
Guest bathroom	0.9m x 2.0m
Total *	137.7m ²
	1,377sqft
Balcony*	7.0m ²
	64sqft



Particulars

Property

Marylebone Square, Moxon Street, London W1U
£5,165,000

Rooms



Features

- Two Bedroom + Study
- Designed by Simon Bowden Architecture
- Located in the heart of Marylebone
- Underground Parking Available

Information

Council Tax

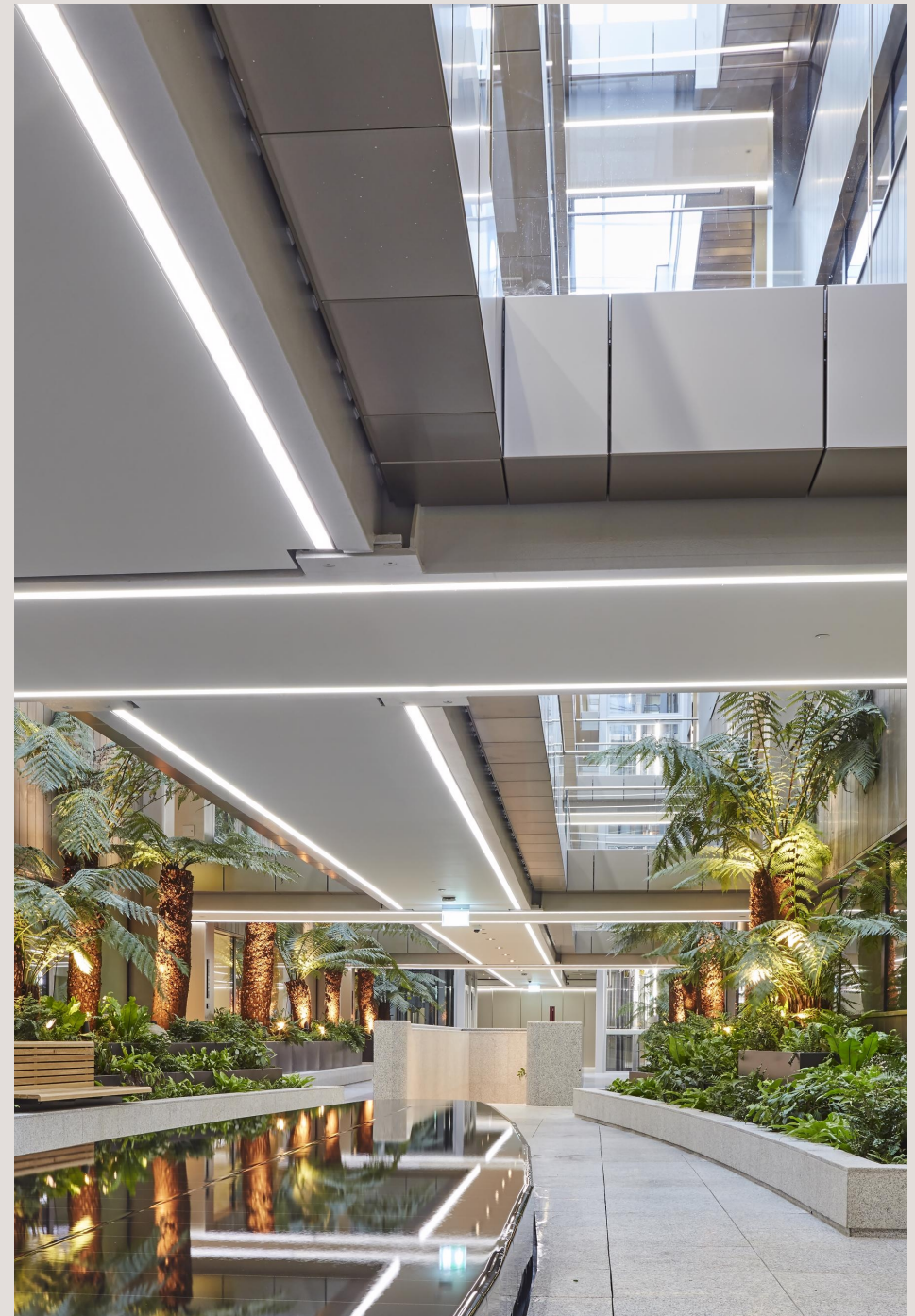


Nouri Alexander

nouri.alexander@vitaproperties.uk
+4475 8405 1289



Scan for our website





T: +4420 7759 2199

E: enquiries@vitaproperties.uk

Disclaimer: These particulars are prepared as a general guide for prospective purchasers or tenants and do not constitute, nor constitute part of, an offer or contract. All statements, descriptions, and measurements contained herein are given in good faith and are believed to be correct at the time of printing, but any intending purchaser or tenant should not rely on them as statements or representations of fact and must satisfy themselves by inspection or otherwise as to their correctness. Floor plans and photographs are for illustrative purposes only and may not be to scale. The position and size of doors, windows, appliances, and other features are approximate. Anti-Money Laundering (AML): In line with the Money Laundering, Terrorist Financing and Transfer of Funds Regulations 2017, we are required to carry out customer due diligence checks. Buyers/tenants will be asked to provide proof of identity, address, and source of funds before a sale or rental can be agreed. Data Protection (GDPR): Personal information supplied to Vita Properties will be processed in accordance with the General Data Protection Regulation (GDPR). Your details may be retained for legitimate business purposes relating to property services. Full details of our Privacy Policy are available on request.

All rights reserved.