



Steeles Road

BELSIZE PARK, LONDON, NW3

£3,346



Short Let - A wonderful period property arranged over five floors and refurbished to the highest standard.

The property comprises five bedrooms, four receptions and five bathrooms circa 3600 sq ft / 335 sq m and also benefits from high ceilings and a landscaped garden.

Steeles Road is superbly situated near the shops and amenities of Belsize Park, Camden and Hampstead Heath.





Short Let - A wonderful period property arranged over five floors and refurbished to the highest standard.

The property comprises five bedrooms, four receptions and five bathrooms circa 3600 sq ft / 335 sq m and also benefits from high ceilings and a landscaped garden.

Steeles Road is superbly situated near the shops and amenities of Belsize Park, Camden and Hampstead Heath.

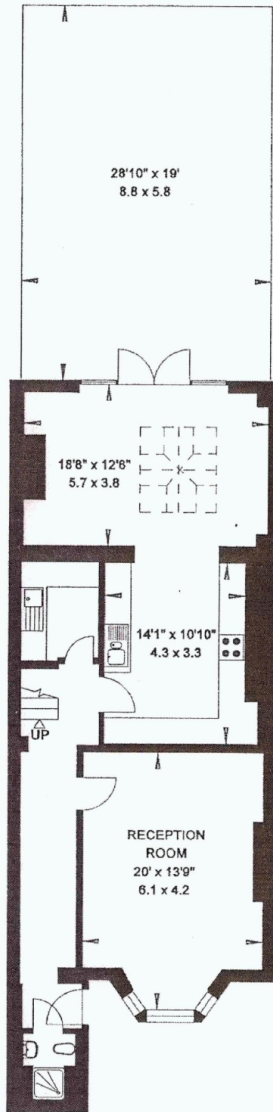




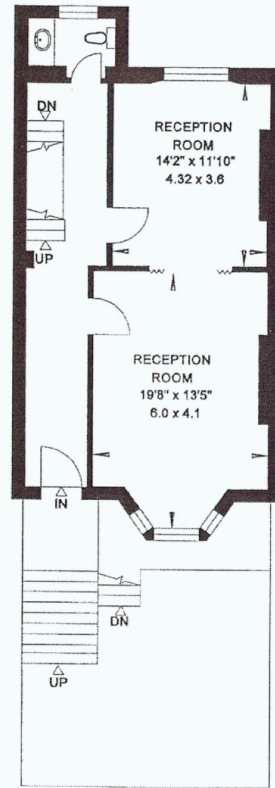




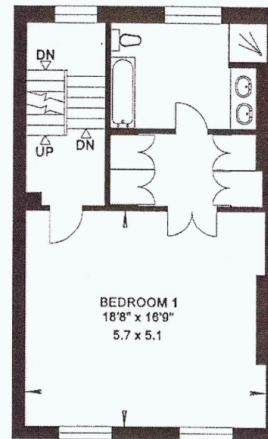
22 STEELES ROAD
LONDON NW3



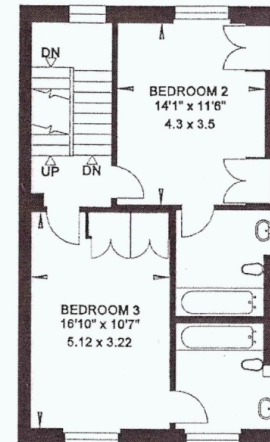
LOWER GROUND FLOOR



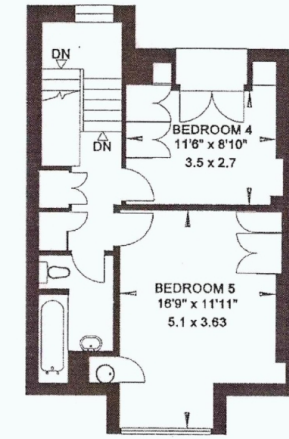
RAISED GROUND FLOOR



FIRST FLOOR



SECOND FLOOR



THIRD FLOOR

Particulars

Property

Steeles Road, Belsize Park, London, NW3
£3,346

Rooms



3



4



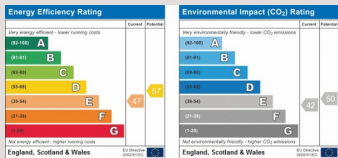
5

Features

- Off Street Parking For One Car
- Reception Room : Dining Room : Conservatory
- Principal Bedroom With En-Suite Bathroom : 4 Further Bedrooms : 4 Further Bathrooms
- Guest Cloakroom

Information

Council Tax



Oliver Kent

oliver.kent@vitaproperties.uk
+4477 7274 0351



Scan for our website





T: +4420 7759 2199
E: enquiries@vitaproperties.uk

Disclaimer: These particulars are prepared as a general guide for prospective purchasers or tenants and do not constitute, nor constitute part of, an offer or contract. All statements, descriptions, and measurements contained herein are given in good faith and are believed to be correct at the time of printing, but any intending purchaser or tenant should not rely on them as statements or representations of fact and must satisfy themselves by inspection or otherwise as to their correctness. Floor plans and photographs are for illustrative purposes only and may not be to scale. The position and size of doors, windows, appliances, and other features are approximate. Anti-Money Laundering (AML): In line with the Money Laundering, Terrorist Financing and Transfer of Funds Regulations 2017, we are required to carry out customer due diligence checks. Buyers/tenants will be asked to provide proof of identity, address, and source of funds before a sale or rental can be agreed. Data Protection (GDPR): Personal information supplied to Vita Properties will be processed in accordance with the General Data Protection Regulation (GDPR). Your details may be retained for legitimate business purposes relating to property services. Full details of our Privacy Policy are available on request.

All rights reserved.